

TRENDS IN EDUCATIONAL INEQUALITIES IN SMOKING-ATTRIBUTABLE MORTALITY AND THEIR IMPACT ON CHANGES IN GENERAL MORTALITY INEQUALITIES

ADDITIONAL TABLES AND FIGURES

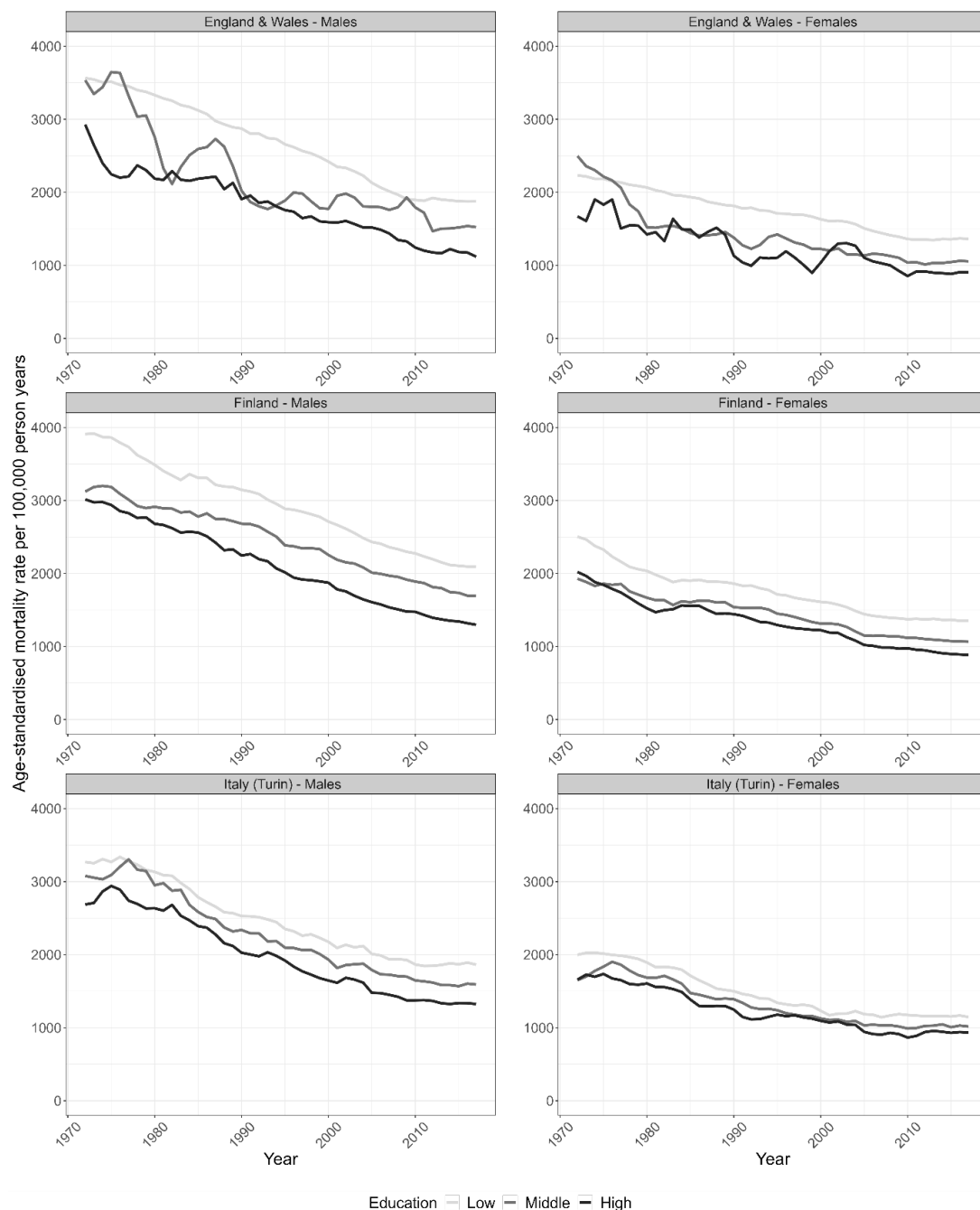
Table A1. Relative index of inequality (RII) and change therein for all-cause, non-smoking-, and smoking-attributable mortality in the years identified as trend breaks in the all-cause mortality slope index of inequality (SII), for the population 30 and older in England & Wales, Finland and Italy (Turin), 1972-2017

	All-cause		Non-smoking		Smoking	
	RII	change	RII	change	RII	change
England & Wales						
Males						
1972	1.79	/	1.40	/	1.79	/
1977	1.96	0.17	1.43	0.03	8.12	6.33
2017	1.76	-0.20	1.70	0.27	0.28	-7.84
Total	/	-0.03	/	0.30	/	-1.51
Females						
1972	1.18	/	1.69	/	36.84	/
1980	1.90	0.72	1.67	-0.02	34.51	-2.33
2017	1.87	-0.03	1.59	-0.08	23.72	-10.79
Total	/	0.69	/	-0.10	/	-13.12
Finland						
Males						
1972	1.94	/	1.46	/	7.22	/
1984	1.92	-0.02	1.54	0.08	5.19	-2.03
1997	2.14	0.22	1.83	0.29	5.62	0.43
2017	2.16	0.02	1.85	0.02	6.75	1.13
Totals	/	0.22	/	0.39	/	-0.47
Females						
1972	1.72	/	1.76	/	0.84	/
1976	1.67	-0.05	1.71	-0.05	1.32	0.48
2017	1.79	0.12	1.65	-0.06	6.22	4.9
Total	/	0.07	/	-0.11	/	5.38
Italy (Turin)						
Males						
1972	1.25	/	1.19	/	1.53	/
1976	1.29	0.04	1.21	0.02	1.66	0.13
1992	1.45	0.16	1.29	0.08	2.18	0.52
2017	1.69	0.24	1.42	0.13	3.00	0.82
Total	/	0.44	/	0.23	/	1.47
Females						
1972	1.30	/	1.35	/	0.69	/
2017	1.29	-0.01	1.38	0.03	0.95	0.26
Totals	/	-0.01	/	0.03	/	0.26

Source data: ONS Longitudinal Study/Statistics Finland/Turin Longitudinal Study

TRENDS IN EDUCATIONAL INEQUALITIES IN SMOKING-ATTRIBUTABLE MORTALITY AND THEIR IMPACT ON CHANGES IN GENERAL MORTALITY INEQUALITIES

Figure A1. Trends in age-standardised all-cause mortality rates* by educational level per 100,000 person years. Males aged 30 and older in England & Wales, Finland, and Italy (Turin), 1972-2017.



*Three-year moving averages

Source data: ONS Longitudinal Study/Statistics Finland/Turin Longitudinal Study