

Table S1. Descriptive characteristics of the study sample by qualification/university type

Characteristics and outcome at 46 years	N	No qualification/GCSEs	A-levels/diplomas	Normal-status university	High-status university
Full sample	7685	4616 (60.1%)	1134 (14.7%)	1381 (17.8%)	554 (7.2%)
Male	3686	2297 (62.3%)	475 (12.9%)	642 (17.4%)	272 (7.4%)**
Female	3999	2319 (58.0%)	659 (16.5%)	739 (18.5%)	282 (7.1%)
Parental education: degree (10y)	6249				
Yes	1093	370 (33.9%)	162 (14.8%)	352 (32.2%)	209 (19.1%)**
No	5156	3394 (65.8%)	769 (14.9%)	747 (14.5%)	246 (4.8%)
Parental occupational class (10y)	6544				
I Professional	435	115 (26.4%)	71 (16.3%)	157 (36.1%)	92 (21.2%)**
II Managerial and technical	1746	807 (46.2%)	282 (16.2%)	439 (25.2%)	218 (12.5%)
III Non manual	758	424 (55.9%)	122 (16.1%)	155 (20.5%)	57 (7.5%)
III Manual	2570	1799 (70.0%)	353 (13.7%)	321 (12.5%)	97 (3.8%)
IV Partly-skilled	816	579 (71.0%)	122 (15.0%)	94 (11.5%)	21 (2.6%)
V Unskilled	219	174 (79.5%)	25 (11.4%)	17 (7.8%)	3 (1.4%)
Weekly household income (10y)	6203				
Under £35	92	65 (70.7%)	10 (10.9%)	15 (16.3%)	2 (2.2%)**
£35-49	265	197 (74.3%)	35 (13.2%)	29 (10.9%)	4 (1.5%)
£50-99	1677	1171 (69.8%)	217 (12.9%)	236 (14.1%)	53 (3.2%)
£100-149	2186	1389 (63.4%)	332 (15.2%)	341 (15.6%)	124 (5.7%)
£150-199	1108	582 (52.5%)	181 (16.3%)	238 (21.5%)	107 (9.7%)
£200-249	449	173 (38.5%)	87 (19.4%)	118 (26.3%)	71 (15.8%)
£250	426	147 (34.5%)	57 (13.4%)	119 (27.9%)	103 (24.2%)
Reading score (10y)	5702	39.0 (11.6)	44.6 (10.6)	48.8 (9.8)	52.8 (8.5)**
Maths score (10y)	5707	42.7 (11.0)	47.5 (10.5)	52.5 (9.8)	56.8 (9.1)**
Spelling Dictation task (10y)	6092	34.1 (10.5)	37.6 (9.4)	39.8 (8.2)	42.4 (7.5)**
Pictorial Language Comprehension (10y)	6202	60.3 (9.8)	64.1 (10.1)	67.1 (9.8)	70.4 (9.6)**
British Ability Scales (10y)	5674	58.3 (12.0)	64.0 (11.8)	68.4 (11.7)	73.7 (10.9)**
School missed due to illness (10y)	6677				
Yes	2464	1541 (62.5%)	372 (15.1%)	403 (16.4%)	148 (6.0%)**
No	4213	2447 (58.1%)	619 (14.7%)	800 (19.0%)	347 (8.2%)
Presence of disability (10y)	6690				
Yes	452	301 (66.6%)	59 (13.1%)	70 (15.5%)	22 (4.9%)**
No	6238	3703 (59.4%)	932 (14.9%)	1128 (18.1%)	475 (7.6%)
Body mass index (kg/m ²)	6715	28.9 (5.6)	28.6 (5.5)	27.3 (4.9)	26.5 (4.7)**
Systolic blood pressure (mmHg)	6829	124.9 (15.2)	123.7 (15.3)	122.1 (14.3)	121.9 (14.6)**
Pulse (beats per minute)	6827	69.0 (10.8)	68.1 (10.1)	66.7 (10.2)	66.3 (11.0)**
Grip strength (kg)	6791	38.6 (12.5)	37.1 (11.6)	37.6 (11.0)	38.1 (10.8)**
Standing balance: eyes opened (seconds)	6698	27.7 (6.3)	28.3 (5.5)	28.8 (4.7)	29.1 (4.2)**
Standing balance: eyes closed (seconds)	5805	11.2 (9.3)	11.6 (9.4)	13.7 (10.5)	14.6 (10.3)**
Immediate word recall (number)	7630	6.3 (1.4)	6.8 (1.4)	7.1 (1.4)	7.5 (1.3)**
Animal naming (number)	7625	22.5 (5.8)	24.4 (6.0)	25.7 (6.3)	27.2 (6.0)**
Letter cancellation speed	7412	339.1 (84.3)	350.2 (80.1)	360.0 (87.3)	366.5 (82.7)**
Delayed word recall (number)	7623	5.1 (1.7)	5.7 (1.7)	6.1 (1.7)	6.6 (1.7)**

*P<0.05, **P<0.01, using chi-square or t-test across university type

Table S2. Associations between type of high school attended and health outcomes at age 46, comprehensive and other as reference group. Fully adjusted models have adjusted for sex, childhood socioeconomic position, childhood health and childhood cognitive ability (measured at age 10).

Outcomes at 46 years	N	Grammar; Z-score (95% CI)		Private; Z-score (95% CI)	
		Sex-adjusted models	Fully adjusted models	Sex-adjusted models	Fully adjusted models
-Cardiometabolic					
Body mass index	7068	0.16 (0.04, 0.28)	0.02 (-0.10, 0.15)	0.32 (0.23, 0.41)	0.14 (0.04, 0.23)
Systolic blood pressure	7180	0.06 (-0.06, 0.17)	-0.00 (-0.12, 0.12)	0.19 (0.10, 0.27)	0.10 (0.01, 0.19)
Pulse	7178	0.16 (0.04, 0.28)	0.08 (-0.05, 0.20)	0.19 (0.10, 0.28)	0.08 (-0.02, 0.18)
-Physical function					
Grip strength	7146	0.00 (-0.08, 0.08)	-0.02 (-0.10, 0.06)	0.02 (-0.04, 0.08)	-0.01 (-0.07, 0.05)
Standing balance: eyes opened	7054	0.05 (-0.07, 0.17)	-0.06 (-0.19, 0.06)	0.12 (0.03, 0.21)	-0.01 (-0.11, 0.09)
Standing balance: eyes closed	6118	0.26 (0.14, 0.39)	0.15 (0.02, 0.28)	0.26 (0.17, 0.36)	0.10 (-0.01, 0.20)
-Cognitive function					
Immediate word recall	8052	0.40 (0.29, 0.52)	0.05 (-0.06, 0.16)	0.44 (0.36, 0.53)	0.07 (-0.02, 0.16)
Animal naming	8047	0.42 (0.31, 0.53)	0.09 (-0.02, 0.20)	0.44 (0.35, 0.52)	0.07 (-0.01, 0.16)
Letter cancellation speed	7822	0.08 (-0.04, 0.19)	-0.01 (-0.12, 0.11)	0.21 (0.12, 0.29)	0.11 (0.02, 0.20)
Delayed word recall	8046	0.41 (0.29, 0.52)	0.09 (-0.02, 0.20)	0.40 (0.32, 0.49)	0.06 (-0.03, 0.15)

Table S3. Associations between type of high school attended and health outcomes at age 46, grammar school as reference group. Fully adjusted models have adjusted for sex, childhood socioeconomic position, childhood health and childhood cognitive ability (measured at age 10).

Outcomes at 46 years	N	Comprehensive and other		Private	
		Z-score (95% CI)		Z-score (95% CI)	
		Sex-adjusted models	Fully adjusted models	Sex-adjusted models	Fully adjusted models
-Cardiometabolic					
Body mass index	7068	-0.16 (-0.28, -0.04)	-0.02 (-0.14, 0.10)	0.16 (0.01, 0.31)	0.12 (-0.03, 0.26)
Systolic blood pressure	7180	-0.06 (-0.17, 0.06)	0.00 (-0.12, 0.12)	0.13 (-0.01, 0.27)	0.10 (-0.04, 0.24)
Pulse	7178	-0.16 (-0.28, -0.04)	-0.08 (-0.20, 0.05)	0.03 (-0.11, 0.18)	0.00 (-0.14, 0.15)
-Physical function					
Grip strength	7146	0.00 (-0.08, 0.08)	0.02 (-0.06, 0.10)	0.02 (-0.07, 0.12)	0.01 (-0.09, 0.10)
Standing balance: eyes opened	7054	-0.05 (-0.17, 0.07)	0.06 (-0.06, 0.19)	0.07 (-0.08, 0.22)	0.05 (-0.09, 0.20)
Standing balance: eyes closed	6118	-0.26 (-0.39, -0.14)	-0.15 (-0.28, -0.02)	-0.00 (-0.16, 0.15)	-0.05 (-0.21, 0.10)
-Cognitive function					
Immediate word recall	8052	-0.40 (-0.52, -0.29)	-0.05 (-0.16, 0.06)	0.04 (-0.10, 0.18)	0.02 (-0.11, 0.15)
Animal naming	8047	-0.42 (-0.53, -0.31)	-0.09 (-0.20, 0.02)	0.02 (-0.12, 0.16)	-0.01 (-0.14, 0.12)
Letter cancellation speed	7822	-0.08 (-0.19, 0.04)	0.01 (-0.11, 0.12)	0.13 (-0.01, 0.27)	0.11 (-0.03, 0.25)
Delayed word recall	8046	-0.41 (-0.52, -0.29)	-0.09 (-0.20, 0.02)	-0.01 (-0.14, 0.13)	-0.03 (-0.16, 0.10)

Table S4. Associations between type of qualification/university attended and health outcomes at age 46, normal-status university as reference group. Fully adjusted models have adjusted for sex, childhood socioeconomic position, childhood health and childhood cognitive ability (measured at age 10).

Outcomes at 46 years	N	No qualification/GCSEs Z-score (95%CI)		A-levels/diplomas Z-score (95%CI)		Higher-status university Z-score (95%CI)	
		Sex-adjusted models	Fully adjusted models	Sex-adjusted models	Fully adjusted models	Sex-adjusted models	Fully adjusted models
-Cardiometabolic							
Body mass index	6715	-0.31 (-0.37, -0.25)	-0.21 (-0.28, -0.14)	-0.25 (-0.33, -0.17)	-0.20 (-0.29, -0.12)	0.14 (0.04, 0.25)	0.09 (-0.01, 0.20)
Systolic blood pressure	6829	-0.16 (-0.22, -0.10)	-0.12 (-0.19, -0.05)	-0.13 (-0.21, -0.05)	-0.11 (-0.19, -0.03)	0.03 (-0.07, 0.13)	0.01 (-0.09, 0.11)
Pulse	6827	-0.22 (-0.28, -0.16)	-0.16 (-0.23, -0.09)	-0.13 (-0.21, -0.05)	-0.10 (-0.18, -0.02)	0.03 (-0.08, 0.13)	-0.00 (-0.11, 0.10)
-Physical function							
Grip strength	6791	0.02 (-0.02, 0.06)	0.06 (0.01, 0.10)	0.02 (-0.04, 0.07)	0.03 (-0.02, 0.09)	-0.02 (-0.08, 0.05)	-0.05 (-0.11, 0.02)
Standing balance: eyes opened	6698	-0.19 (-0.25, -0.12)	-0.09 (-0.16, -0.02)	-0.08 (-0.16, 0.00)	-0.04 (-0.12, 0.04)	0.05 (-0.05, 0.15)	-0.00 (-0.11, 0.11)
Standing balance: eyes closed	5805	-0.26 (-0.33, -0.20)	-0.18 (-0.25, -0.10)	-0.20 (-0.29, -0.12)	-0.16 (-0.25, -0.07)	0.09 (-0.01, 0.20)	0.04 (-0.07, 0.15)
-Cognitive function							
Immediate word recall	7630	-0.53 (-0.58, -0.47)	-0.24 (-0.31, -0.18)	-0.22 (-0.30, -0.15)	-0.11 (-0.18, -0.03)	0.30 (0.21, 0.40)	0.16 (0.07, 0.26)
Animal naming	7625	-0.52 (-0.58, -0.46)	-0.22 (-0.28, -0.16)	-0.21 (-0.29, -0.13)	-0.08 (-0.16, -0.01)	0.25 (0.15, 0.34)	0.10 (0.00, 0.19)
Letter cancellation speed	7412	-0.24 (-0.30, -0.18)	-0.19 (-0.26, -0.13)	-0.13 (-0.20, -0.05)	-0.11 (-0.19, -0.03)	0.09 (-0.01, 0.18)	0.05 (-0.04, 0.15)
Delayed word recall	7623	-0.53 (-0.59, -0.48)	-0.28 (-0.34, -0.22)	-0.26 (-0.34, -0.19)	-0.16 (-0.23, -0.08)	0.27 (0.17, 0.36)	0.14 (0.05, 0.24)

Table S5. Associations between type of high school attended and health outcomes at age 46, models adjusted for sex and cognitive ability at age 10, comprehensive and other as reference group.

Outcomes at 46 years	N	Grammar Z-score (95% CI)	Private Z-score (95% CI)
-Cardiometabolic			
Body mass index	7068	0.05 (-0.07, 0.18)	0.22 (0.12, 0.31)
Systolic blood pressure	7180	0.02 (-0.10, 0.13)	0.15 (0.06, 0.23)
Pulse	7178	0.10 (-0.03, 0.22)	0.13 (0.04, 0.22)
-Physical function			
Grip strength	7146	-0.02 (-0.09, 0.06)	0.01 (-0.05, 0.07)
Standing balance: eyes opened	7054	-0.05 (-0.18, 0.07)	0.02 (-0.07, 0.12)
Standing balance: eyes closed	6118	0.18 (0.05, 0.31)	0.18 (0.09, 0.28)
-Cognitive function			
Immediate word recall	8052	0.07 (-0.04, 0.18)	0.13 (0.05, 0.22)
Animal naming	8047	0.11 (0.00, 0.22)	0.16 (0.07, 0.24)
Letter cancellation speed	7822	0.01 (-0.11, 0.13)	0.15 (0.06, 0.24)
Delayed word recall	8046	0.11 (0.00, 0.22)	0.12 (0.03, 0.20)

Table S6. Associations between type of qualification/university attended and health outcomes at age 46, models adjusted for sex and cognitive ability at age 10, normal status university as reference group.

Outcomes at 46 years	N	No qualification/GCSEs Z-score (95%CI)	A-levels/diplomas Z-score (95%CI)	High-status university Z-score (95%CI)
-Cardiometabolic				
Body mass index	6715	-0.24 (-0.31, -0.17)	-0.22 (-0.31, -0.14)	0.11 (0.01, 0.22)
Systolic blood pressure	6829	-0.14 (-0.20, -0.07)	-0.12 (-0.20, -0.04)	0.02 (-0.07, 0.12)
Pulse	6827	-0.17 (-0.24, -0.11)	-0.11 (-0.19, -0.03)	0.01 (-0.10, 0.11)
-Physical function				
Grip strength	6791	0.05 (0.01, 0.09)	0.03 (-0.02, 0.08)	-0.03 (-0.10, 0.03)
Standing balance: eyes opened	6698	-0.10 (-0.17, -0.03)	-0.04 (-0.12, 0.04)	0.01 (-0.10, 0.11)
Standing balance: eyes closed	5805	-0.21 (-0.29, -0.14)	-0.18 (-0.27, -0.09)	0.07 (-0.04, 0.17)
-Cognitive function				
Immediate word recall	7630	-0.26 (-0.32, -0.20)	-0.11 (-0.19, -0.04)	0.18 (0.08, 0.27)
Animal naming	7625	-0.25 (-0.31, -0.19)	-0.10 (-0.17, -0.02)	0.12 (0.03, 0.21)
Letter cancellation speed	7412	-0.20 (-0.27, -0.13)	-0.11 (-0.19, -0.03)	0.07 (-0.03, 0.17)
Delayed word recall	7623	-0.29 (-0.35, -0.23)	-0.16 (-0.23, -0.08)	0.15 (0.06, 0.25)

Table S7. Associations between type of high school attended and health outcomes at age 46, models adjusted for sex, childhood socioeconomic position, childhood health, childhood cognitive ability at age 10; and cognitive ability at age 5, comprehensive and other as reference group.

Outcomes at 46 years	N	Grammar Z-score (95% CI)	Private Z-score (95% CI)
-Cardiometabolic			
Body mass index	7068	0.02 (-0.11, 0.14)	0.14 (0.04, 0.24)
Systolic blood pressure	7180	0.00 (-0.12, 0.11)	0.10 (0.01, 0.20)
Pulse	7178	0.09 (-0.03, 0.21)	0.10 (0.00, 0.20)
-Physical function			
Grip strength	7146	-0.02 (-0.10, 0.06)	-0.01 (-0.07, 0.06)
Standing balance: eyes opened	7054	-0.07 (-0.19, 0.06)	0.00 (-0.10, 0.10)
Standing balance: eyes closed	6118	0.14 (0.01, 0.27)	0.09 (-0.01, 0.27)
-Cognitive function			
Immediate word recall	8052	0.04 (-0.07, 0.15)	0.07 (-0.01, 0.16)
Animal naming	8047	0.07 (-0.04, 0.18)	0.07 (-0.02, 0.16)
Letter cancellation speed	7822	-0.02 (-0.14, 0.09)	0.10 (0.00, 0.20)
Delayed word recall	8046	0.07 (-0.04, 0.18)	0.05 (-0.03, 0.14)

Table S8. Associations between type of qualification/university attended and health outcomes at age 46, models adjusted for sex, childhood socioeconomic position, childhood health, childhood cognitive ability at age 10; and cognitive ability at age 5, normal status university as reference group.

Outcomes at 46 years	N	No qualification/GCSEs Z-score (95%CI)	A-levels/diplomas Z-score (95%CI)	High-status university Z-score (95%CI)
-Cardiometabolic				
Body mass index	6715	-0.21 (-0.28, -0.14)	-0.20 (-0.29, -0.12)	0.10 (0.01, 0.20)
Systolic blood pressure	6829	-0.12 (-0.19, -0.05)	-0.11 (-0.19, -0.03)	0.02 (-0.08, 0.12)
Pulse	6827	-0.17 (-0.24, -0.10)	-0.11 (-0.19, -0.02)	0.01 (-0.10, 0.11)
-Physical function				
Grip strength	6791	0.07 (0.02, 0.11)	0.03 (-0.02, 0.09)	-0.03 (-0.10, 0.03)
Standing balance: eyes opened	6698	-0.09 (-0.16, -0.02)	-0.05 (-0.13, 0.04)	0.00 (-0.10, 0.11)
Standing balance: eyes closed	5805	-0.18 (-0.25, -0.10)	-0.16 (-0.25, -0.07)	0.03 (-0.07, 0.14)
-Cognitive function				
Immediate word recall	7630	-0.24 (-0.30, -0.17)	-0.11 (-0.18, -0.04)	0.17 (0.08, 0.26)
Animal naming	7625	-0.21 (-0.27, -0.15)	-0.08 (-0.16, -0.01)	0.11 (0.02, 0.21)
Letter cancellation speed	7412	-0.18 (-0.24, -0.11)	-0.10 (-0.18, -0.02)	0.05 (-0.05, 0.15)
Delayed word recall	7623	-0.26 (-0.33, -0.20)	-0.15 (-0.23, -0.08)	0.15 (0.05, 0.24)

Table S9. Associations between type of high school attended and health outcomes at age 46, models adjusted for sex, childhood socioeconomic position, childhood health, childhood cognitive ability at age 10; and home learning environment and parental educational aspirations measures, comprehensive and other as reference group.

Outcomes at 46 years	N	Grammar Z-score (95% CI)	Private Z-score (95% CI)
-Cardiometabolic			
Body mass index	7068	0.02 (-0.11, 0.14)	0.13 (0.03, 0.23)
Systolic blood pressure	7180	-0.01 (-0.12, 0.11)	0.09 (0.01, 0.19)
Pulse	7178	0.08 (-0.05, 0.20)	0.09 (-0.01, 0.18)
-Physical function			
Grip strength	7146	-0.01 (-0.09, 0.07)	-0.01 (-0.07, 0.05)
Standing balance: eyes opened	7054	-0.06 (-0.19, 0.06)	-0.01 (-0.10, 0.09)
Standing balance: eyes closed	6118	0.14 (0.01, 0.27)	0.09 (-0.02, 0.19)
-Cognitive function			
Immediate word recall	8052	0.05 (-0.06, 0.15)	0.07 (-0.02, 0.16)
Animal naming	8047	0.07 (-0.04, 0.18)	0.06 (-0.03, 0.15)
Letter cancellation speed	7822	-0.01 (-0.13, 0.11)	0.11 (0.01, 0.20)
Delayed word recall	8046	0.09 (-0.02, 0.20)	0.06 (-0.03, 0.15)

Table S10. Associations between type of qualification/university attended and health outcomes at age 46, models adjusted for sex, childhood socioeconomic position, childhood health, childhood cognitive ability at age 10; and home learning environment and parental educational aspirations measures, normal status university as reference group.

Outcomes at 46 years	N	No qualification/GCSEs Z-score (95%CI)	A-levels/diplomas Z-score (95%CI)	High-status university Z-score (95%CI)
-Cardiometabolic				
Body mass index	6715	-0.20 (-0.27, -0.13)	-0.20 (-0.28, -0.12)	0.09 (-0.01, 0.20)
Systolic blood pressure	6829	-0.12 (-0.19, -0.05)	-0.11 (-0.19, -0.03)	0.01 (-0.09, 0.11)
Pulse	6827	-0.15 (-0.22, -0.08)	-0.10 (-0.18, -0.01)	0.00 (-0.11, 0.10)
-Physical function				
Grip strength	6791	0.05 (0.00, 0.09)	0.03 (-0.03, 0.08)	-0.04 (-0.11, 0.02)
Standing balance: eyes opened	6698	-0.09 (-0.16, -0.02)	-0.04 (-0.12, 0.04)	0.00 (-0.10, 0.10)
Standing balance: eyes closed	5805	-0.17 (-0.24, -0.09)	-0.16 (-0.24, -0.07)	0.04 (-0.07, 0.15)
-Cognitive function				
Immediate word recall	7630	-0.24 (-0.30, -0.18)	-0.11 (-0.18, -0.03)	0.16 (0.07, 0.25)
Animal naming	7625	-0.20 (-0.26, -0.14)	-0.07 (-0.15, -0.00)	0.09 (0.00, 0.19)
Letter cancellation speed	7412	-0.19 (-0.26, -0.13)	-0.11 (-0.19, -0.03)	0.05 (-0.05, 0.15)
Delayed word recall	7623	-0.28 (-0.34, -0.22)	-0.16 (-0.23, -0.08)	0.15 (0.05, 0.24)

Table S11. Associations between type of high school attended and health outcomes at age 46, comprehensive and other as reference group. Fully adjusted models have adjusted for sex, childhood socioeconomic position, childhood health and childhood cognitive ability (measured at age 10). (Participants with complete outcome data at age 46, N=5726)

Outcomes at 46 years	Grammar; Z-score (95% CI)		Private; Z-score (95% CI)	
	Sex-adjusted models	Fully adjusted models	Sex-adjusted models	Fully adjusted models
Body mass index	0.18 (0.06, 0.31)	0.08 (-0.05, 0.20)	0.28 (0.19, 0.37)	0.14 (0.04, 0.23)
Systolic blood pressure	0.05 (-0.08, 0.17)	-0.01 (-0.12, 0.13)	0.17 (0.08, 0.26)	0.10 (0.01, 0.20)
Pulse	0.20 (0.07, 0.33)	0.14 (0.01, 0.27)	0.21 (0.11, 0.30)	0.12 (-0.01, 0.22)
Grip strength	-0.00 (-0.08, 0.08)	-0.00 (-0.09, 0.08)	0.00 (-0.06, 0.06)	-0.01 (-0.07, 0.06)
Standing balance: eyes opened*	-	-	-	-
Standing balance: eyes closed	0.29 (0.15, 0.42)	0.17 (0.03, 0.30)	0.24 (0.15, 0.34)	0.08 (-0.03, 0.18)
Immediate word recall	0.38 (0.25, 0.51)	0.03 (-0.10, 0.16)	0.42 (0.32, 0.51)	0.07 (-0.03, 0.17)
Animal naming	0.38 (0.25, 0.51)	0.04 (-0.09, 0.17)	0.43 (0.33, 0.53)	0.09 (-0.01, 0.19)
Letter cancellation speed	0.11 (-0.02, 0.24)	-0.01 (-0.14, 0.12)	0.23 (0.14, 0.33)	0.10 (-0.00, 0.20)
Delayed word recall	0.36 (0.23, 0.49)	0.06 (-0.07, 0.18)	0.37 (0.28, 0.46)	0.07 (-0.03, 0.17)

* Models did not converge.

Table S12. Associations between type of qualification/university attended and health outcomes at age 46, normal-status university as reference group. Fully adjusted models have adjusted for sex, childhood socioeconomic position, childhood health and childhood cognitive ability (measured at age 10).

(Participants with complete outcome data at age 46, N=5431)

Outcomes at 46 years	No qualification/GCSEs Z-score (95%CI)		A-levels/diplomas Z-score (95%CI)		Higher-status university Z-score (95%CI)	
	Sex-adjusted models	Fully adjusted models	Sex-adjusted models	Fully adjusted models	Sex-adjusted models	Fully adjusted models
Body mass index	-0.26 (-0.32, -0.19)	-0.19 (-0.26, -0.12)	-0.24 (-0.32, -0.16)	-0.20 (-0.29, -0.12)	0.12 (0.02, 0.23)	0.09 (-0.02, 0.19)
Systolic blood pressure	-0.16 (-0.22, -0.09)	-0.13 (-0.21, -0.06)	-0.14 (-0.22, -0.05)	-0.12 (-0.21, -0.04)	0.02 (-0.09, 0.12)	0.01 (-0.10, 0.11)
Pulse	-0.21 (-0.28, -0.14)	-0.16 (-0.23, -0.08)	-0.16 (-0.24, -0.07)	-0.13 (-0.21, -0.04)	0.02 (-0.09, 0.12)	-0.01 (-0.12, 0.10)
Grip strength	0.05 (0.01, 0.10)	0.07 (0.03, 0.12)	0.00 (-0.05, 0.06)	0.01 (-0.04, 0.07)	-0.02 (-0.09, 0.05)	-0.04 (-0.10, 0.03)
Standing balance: eyes opened	-	-	-	-	-	-
Standing balance: eyes closed	-0.27 (-0.34, -0.20)	-0.19 (-0.26, -0.11)	-0.21 (-0.30, -0.12)	-0.17 (-0.26, -0.08)	0.07 (-0.04, 0.18)	0.02 (-0.09, 0.13)
Immediate word recall	-0.49 (-0.56, -0.42)	-0.22 (-0.29, -0.15)	-0.21 (-0.30, -0.12)	-0.09 (-0.18, -0.01)	0.31 (0.20, 0.41)	0.18 (0.08, 0.28)
Animal naming	-0.48 (-0.55, -0.41)	-0.20 (-0.27, -0.13)	-0.19 (-0.28, -0.10)	-0.05 (-0.14, 0.03)	0.24 (0.13, 0.35)	0.11 (0.00, 0.21)
Letter cancellation speed	-0.24 (-0.31, -0.18)	-0.17 (-0.25, -0.10)	-0.14 (-0.23, -0.06)	-0.11 (-0.20, -0.02)	0.10 (-0.01, 0.20)	0.06 (-0.05, 0.16)
Delayed word recall	-0.49 (-0.55, -0.42)	-0.26 (-0.33, -0.18)	-0.26 (-0.34, -0.17)	-0.15 (-0.24, -0.07)	0.25 (0.15, 0.35)	0.15 (0.04, 0.25)

* Models did not converge.

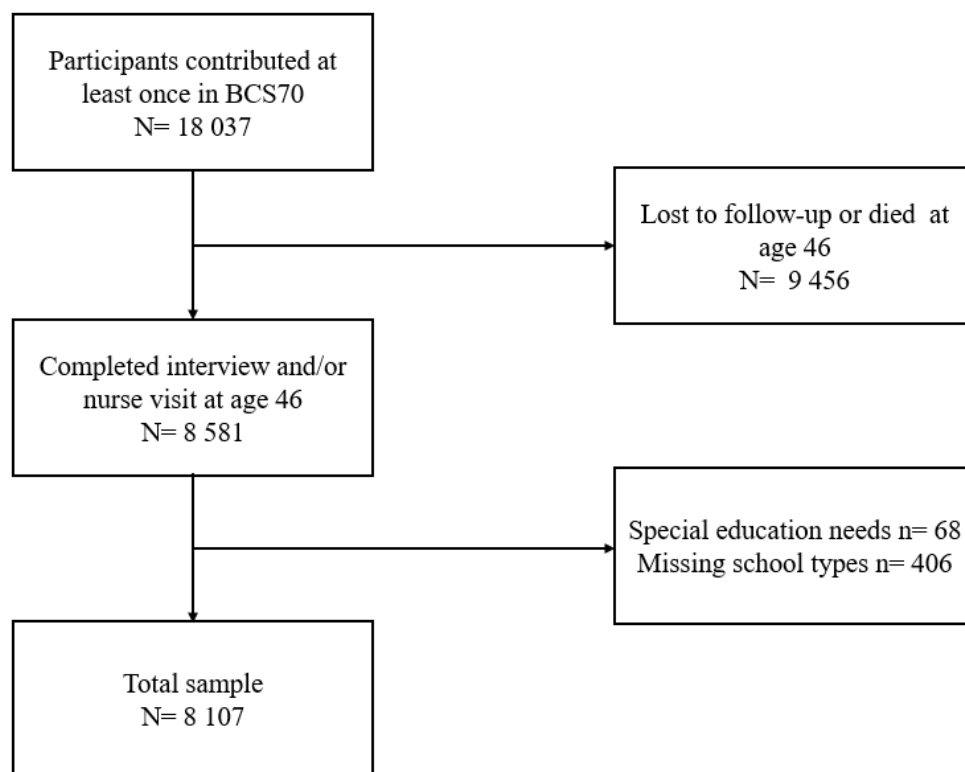


Figure S1. Flow chart on analytical sample selection.

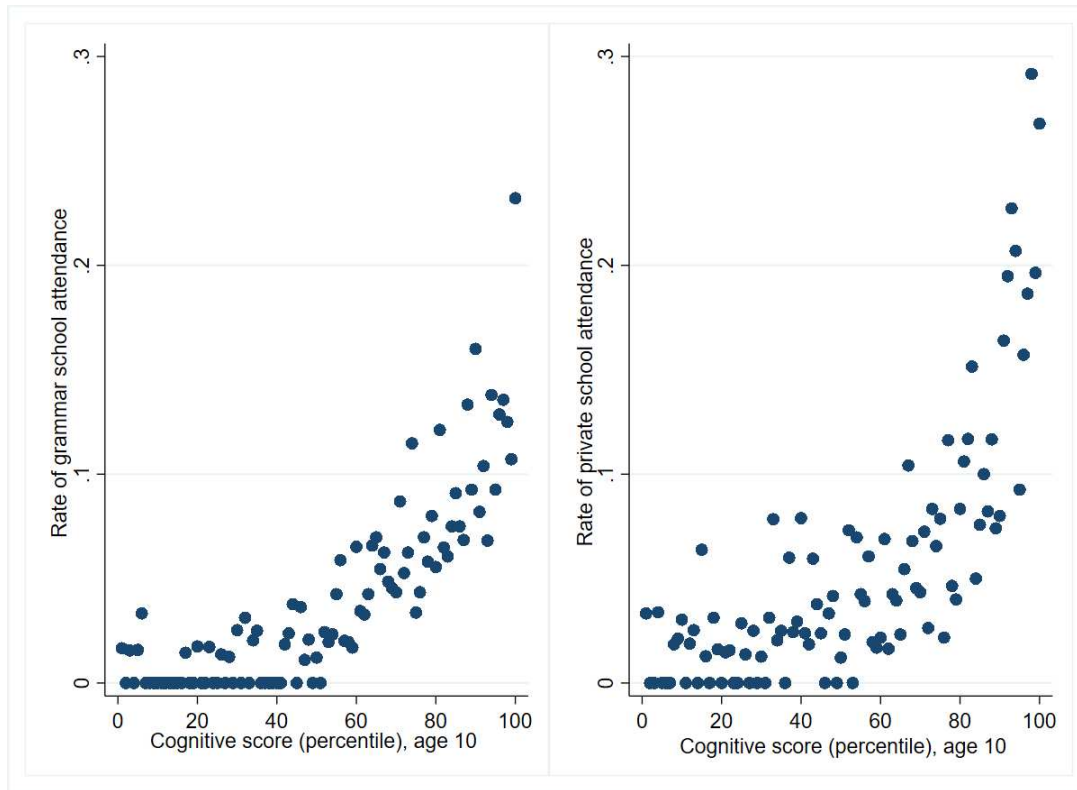


Figure S2. Cognitive score (percentile) at age 10 and rate of grammar/private school attendance.