

Supplementary Material

Table S1. Variables used in the analyses

| Variable | Coding | Source |
|--|---|-------------|
| Vaccinated | Received a first dose of a COVID-19 vaccine by 31 st August 2021 | NIMS |
| Age | Third-order polynomial | 2011 Census |
| Sex | Female, Male | 2011 Census |
| Ethnicity | White British, Bangladeshi, Black African, Black Caribbean, Chinese, Indian, Mixed, Other, Pakistani, White other | 2011 Census |
| Religious affiliation | Christian, Buddhist, Hindu, Jewish, Muslim, Sikh, Other Religion, No religion, Religion Not Stated | 2011 Census |
| English language proficiency | Main language, Not main language | 2011 Census |
| Region | Dummy variables representing region of residence | GPES |
| Rural urban classification | Urban, rural | GPES |
| Index of Multiple Deprivation (IMD) | Dummy variables representing quintiles of deprivation | GPES |
| Household tenure | Own, social rented, private rented, other | 2011 Census |
| Level of highest qualification | Level 4+ (Degree or equivalent), Level 3 (A-level or equivalent), Apprenticeship, Level 2 (GCSE or equivalent), Level 1, other, No qualification | 2011 Census |
| National Statistics Socio-economic classification (NS-SEC) | Higher managerial, administrative and professional occupations, Lower managerial, administrative and professional occupations, Intermediate occupations, Small employers and own account workers, Lower supervisory and technical occupations, Semi-routine occupations, Routine occupations, Never worked and long-term unemployed, Not classified | 2011 Census |
| Disability | Non-disabled, disabled (limited a little), disabled (limited a lot) | 2011 Census |

GPES - General Practice Extraction Service; NIMS - National Immunisation Management System

Figure S1. Proportion of people who received at least one dose of COVID-19 vaccination over time, by English language proficiency and age group

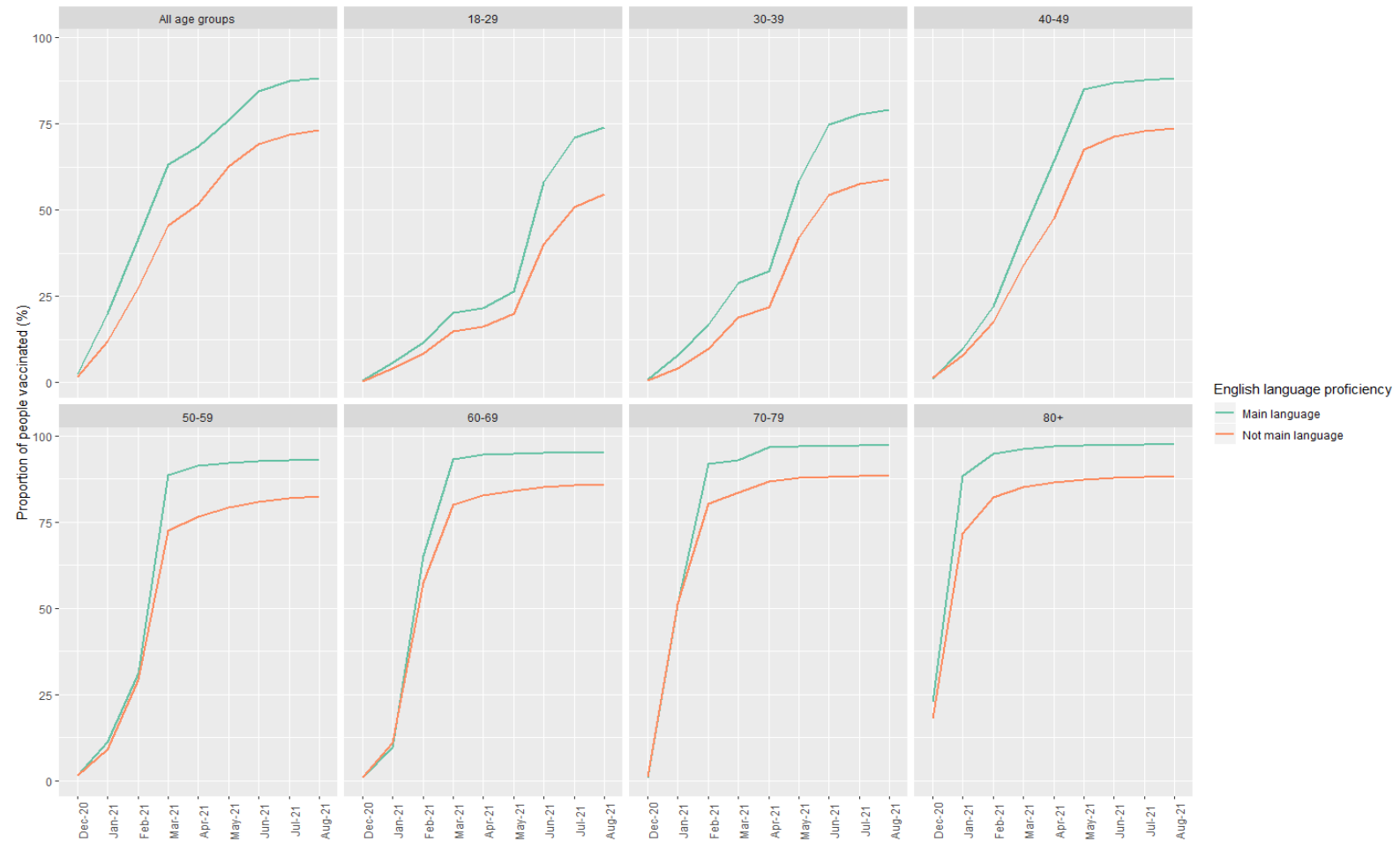


Figure S2. Proportion of people who received at least one dose of COVID-19 vaccination over time, by household tenure and age group

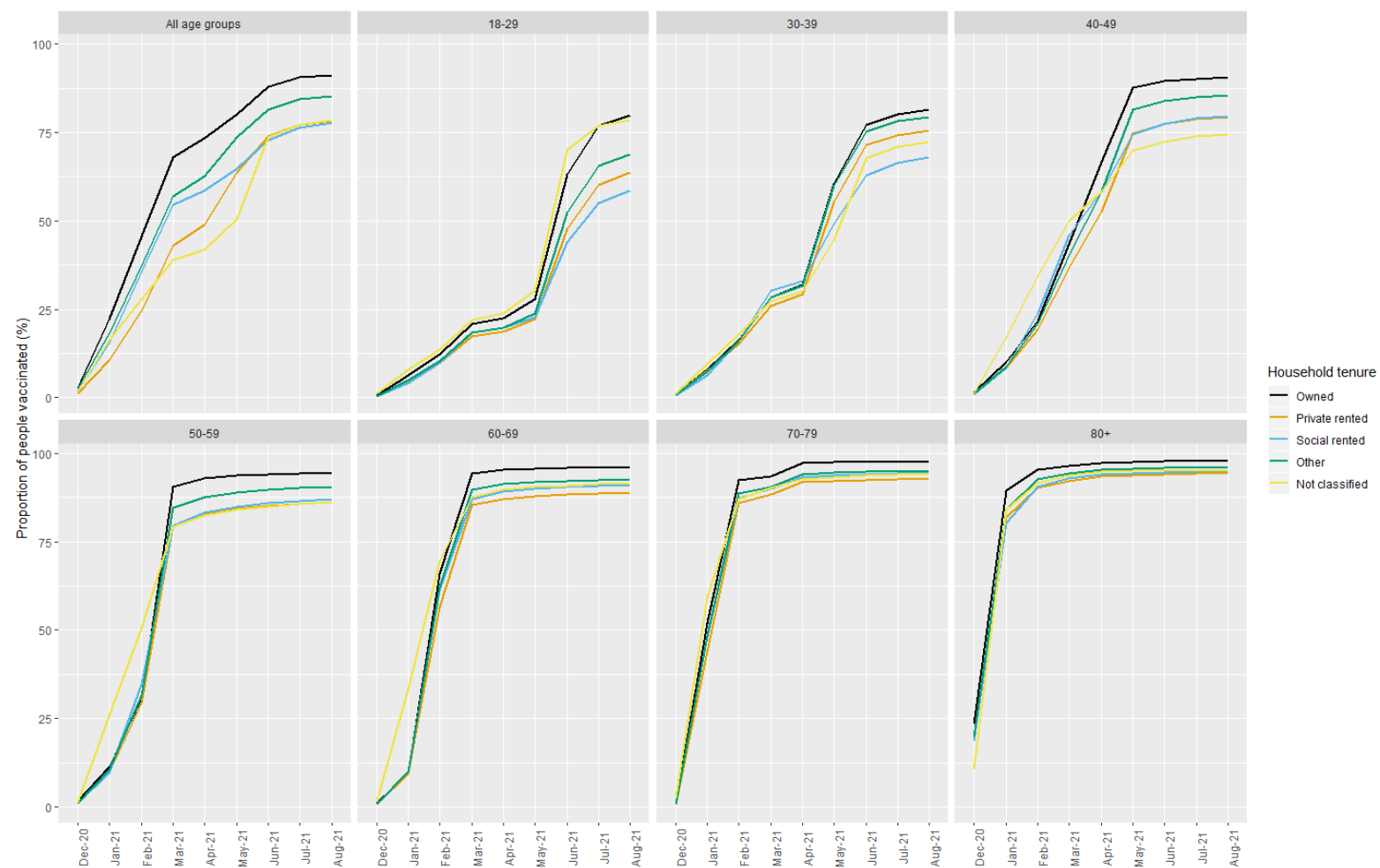


Figure S3. Proportion of people who received at least one dose of COVID-19 vaccination over time, by National Statistics Socio-Economic Classification (NS-SEC) and age group

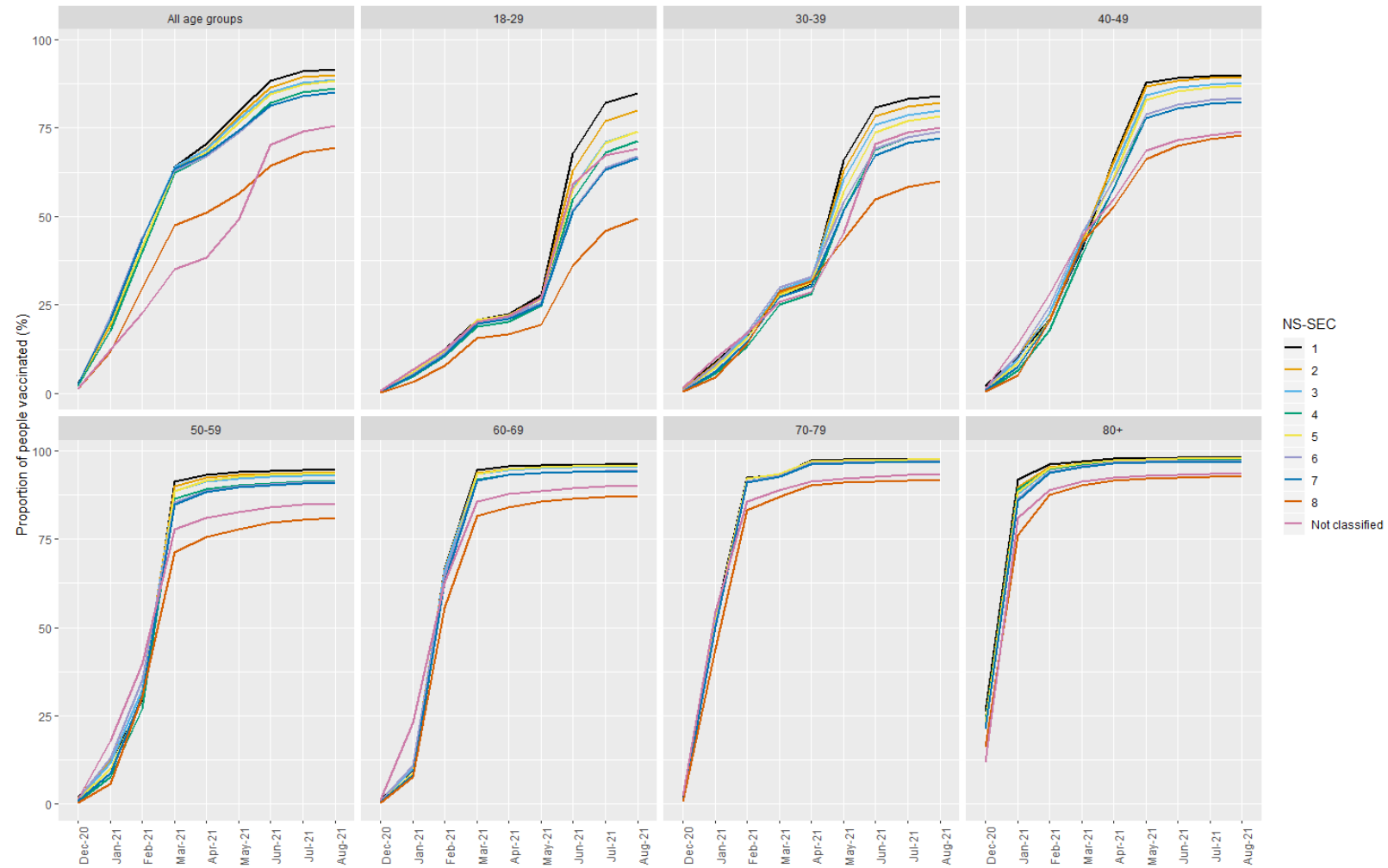
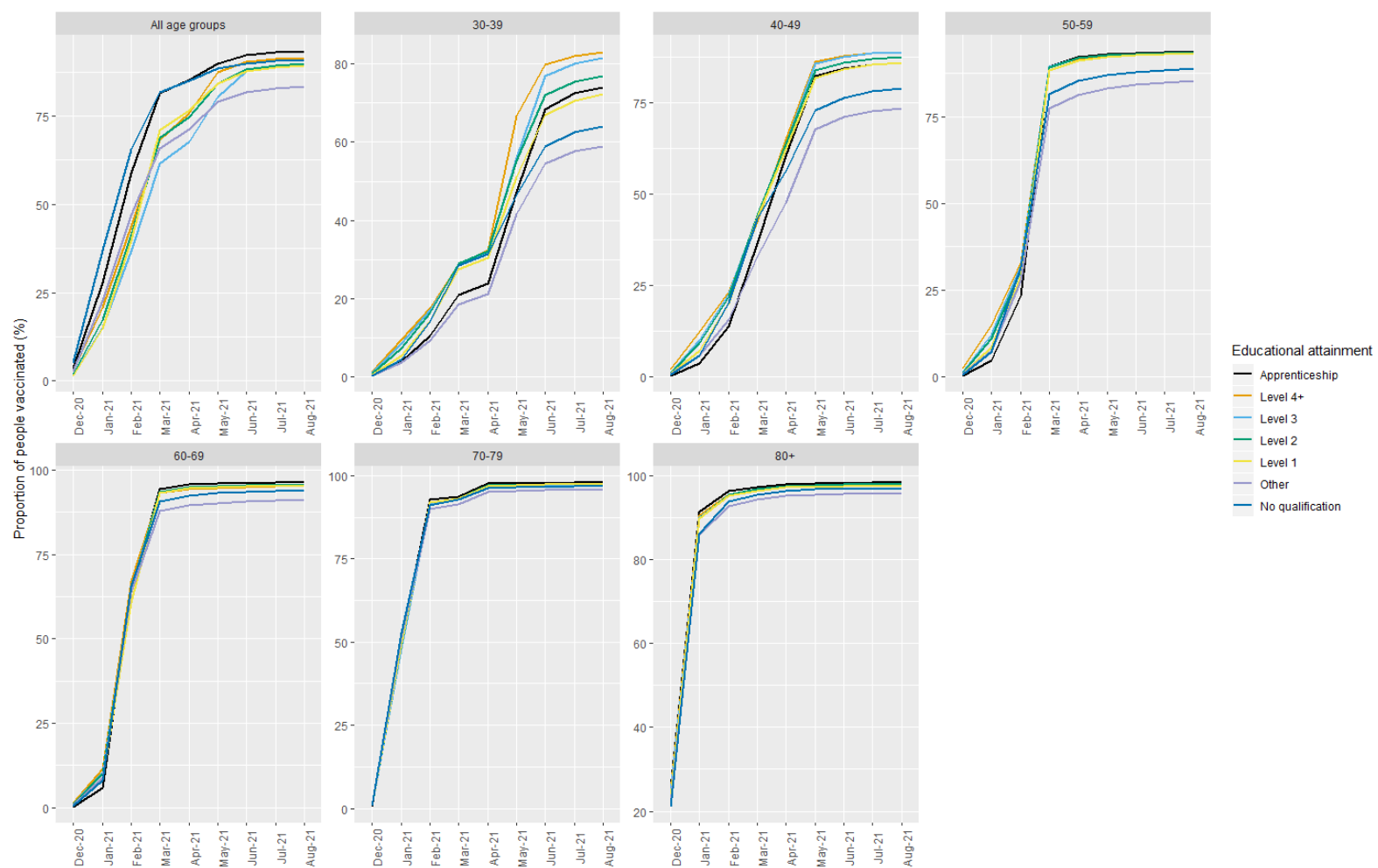


Figure S4. Proportion of people who received at least one dose of COVID-19 vaccination over time, by educational attainment and age group.



Note. Data on educational attainment are only available for those aged 30 years and over, since the 18-29 year age group were likely to have not yet completed their education in 2011 when education data were collected. Level 4+ is degree or equivalent; Level 3 A-level or equivalent, Level 2 GCSE or equivalent