

Figure A1: Health-related deprivation for England, 2015

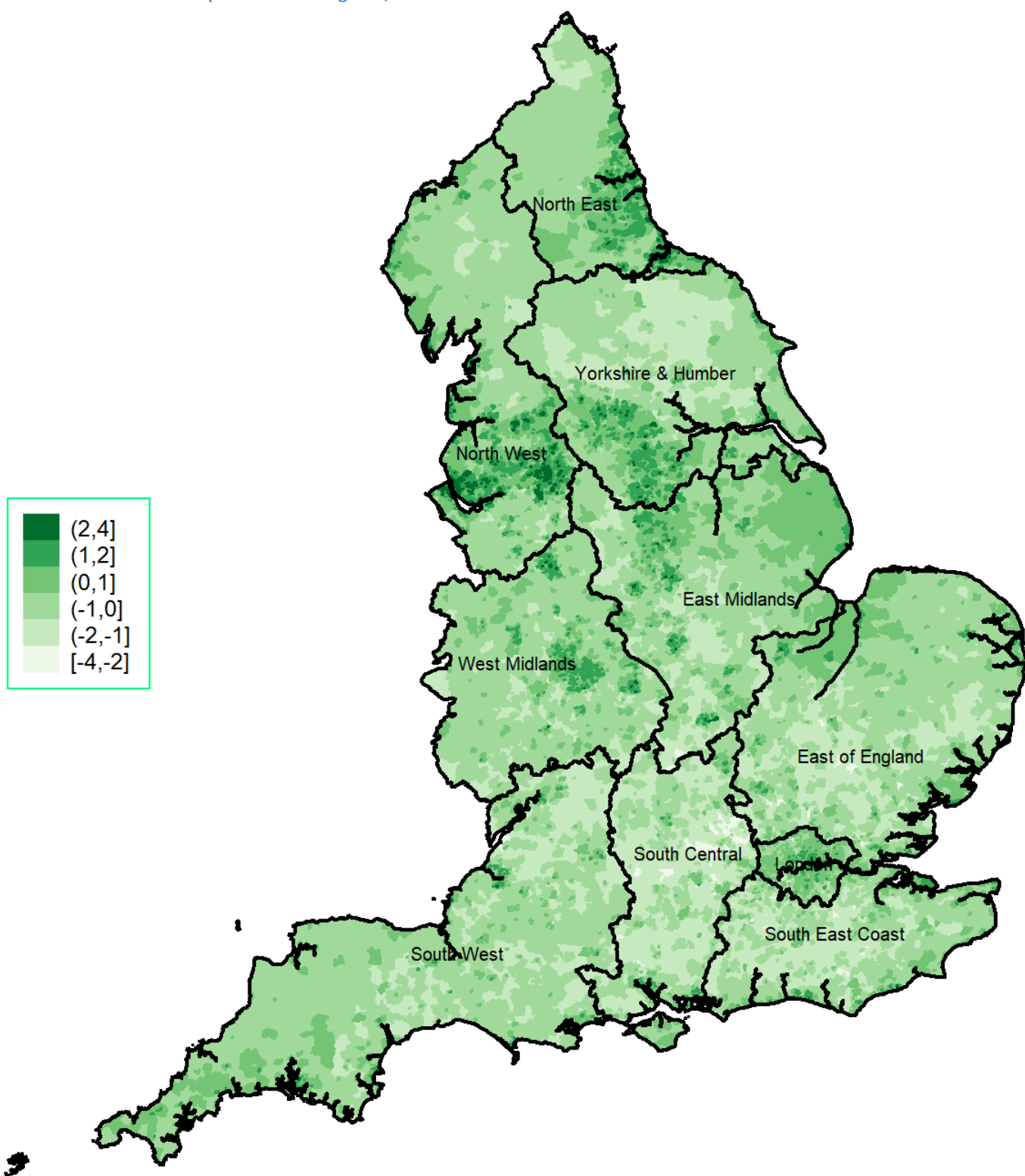


Figure A2: Overall (top) and health-related (bottom) deprivation for Greater London, over time

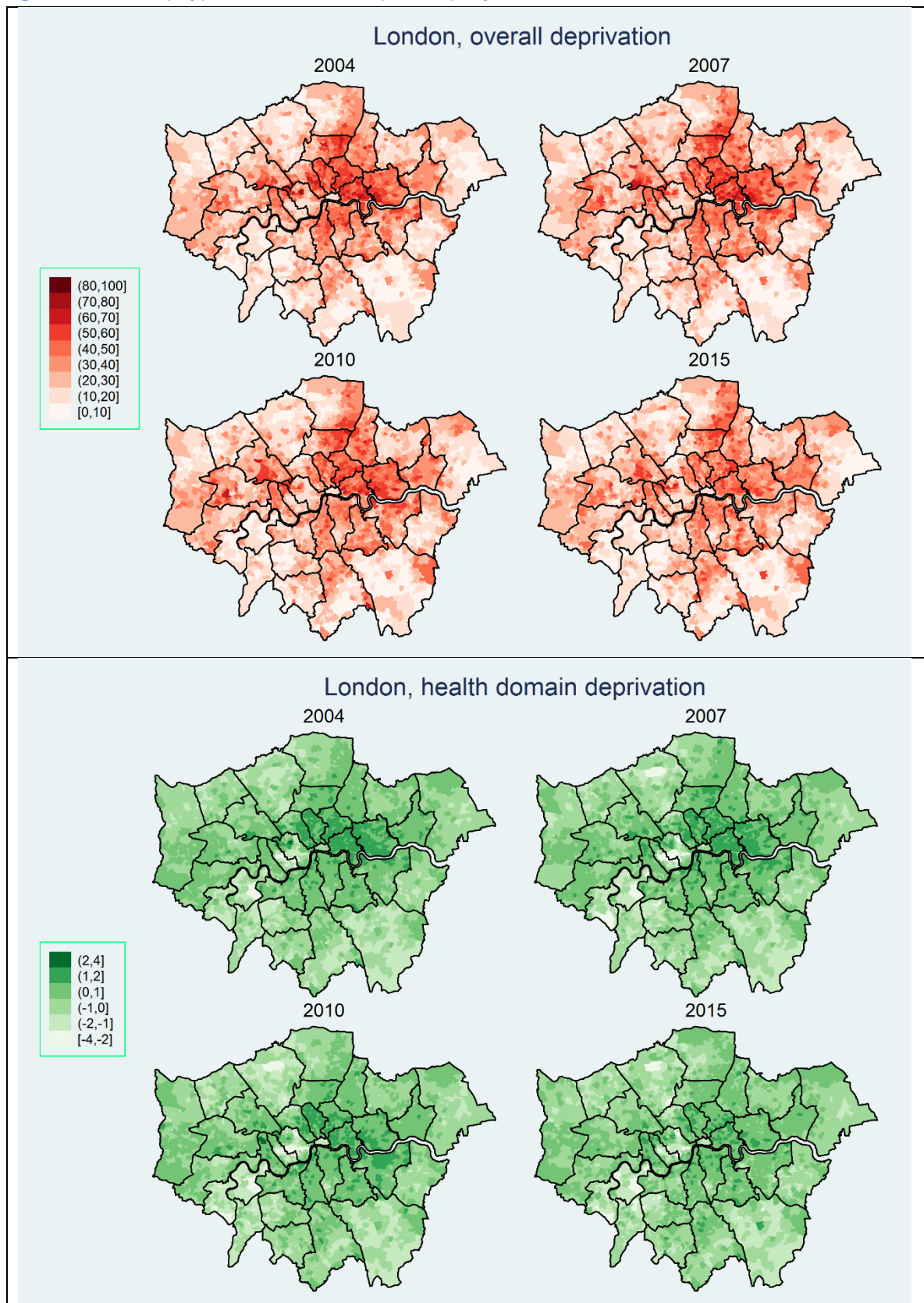


Figure A3: Health-related deprivation subdomains for English regions, over time (1 of 2)

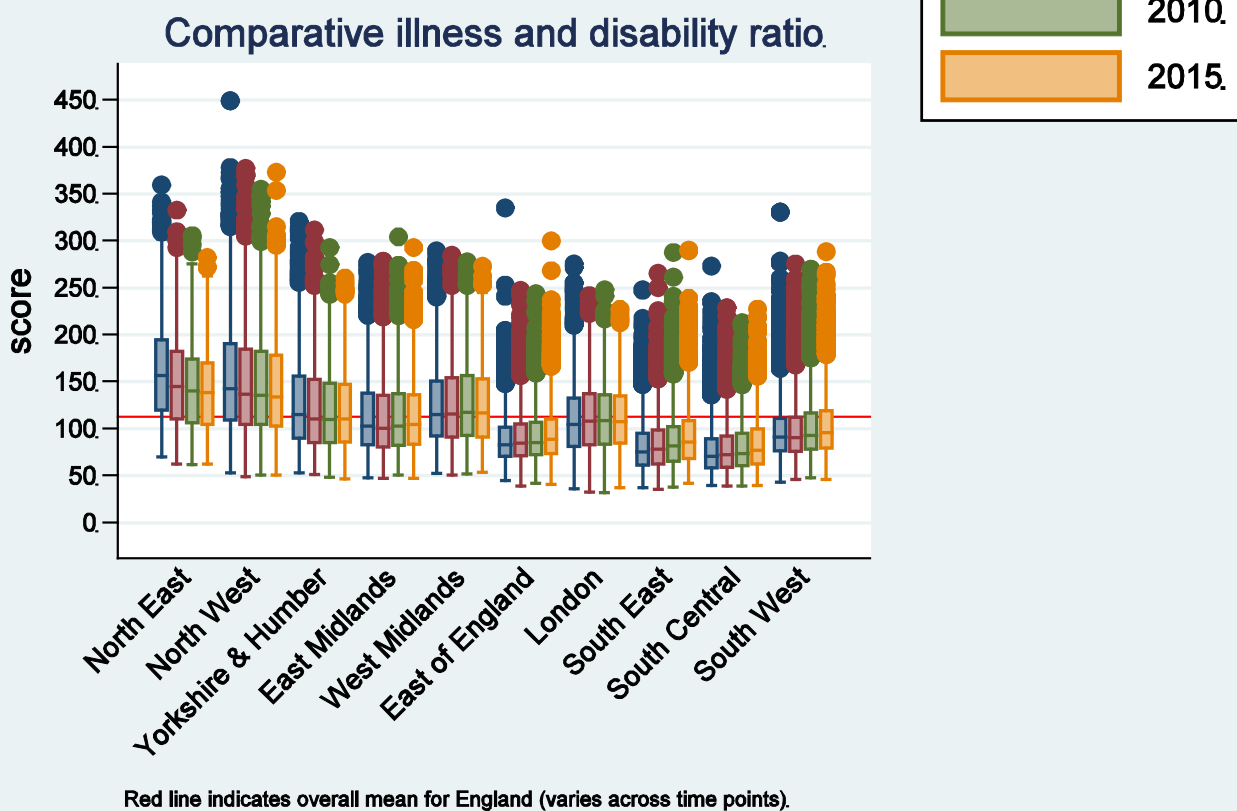
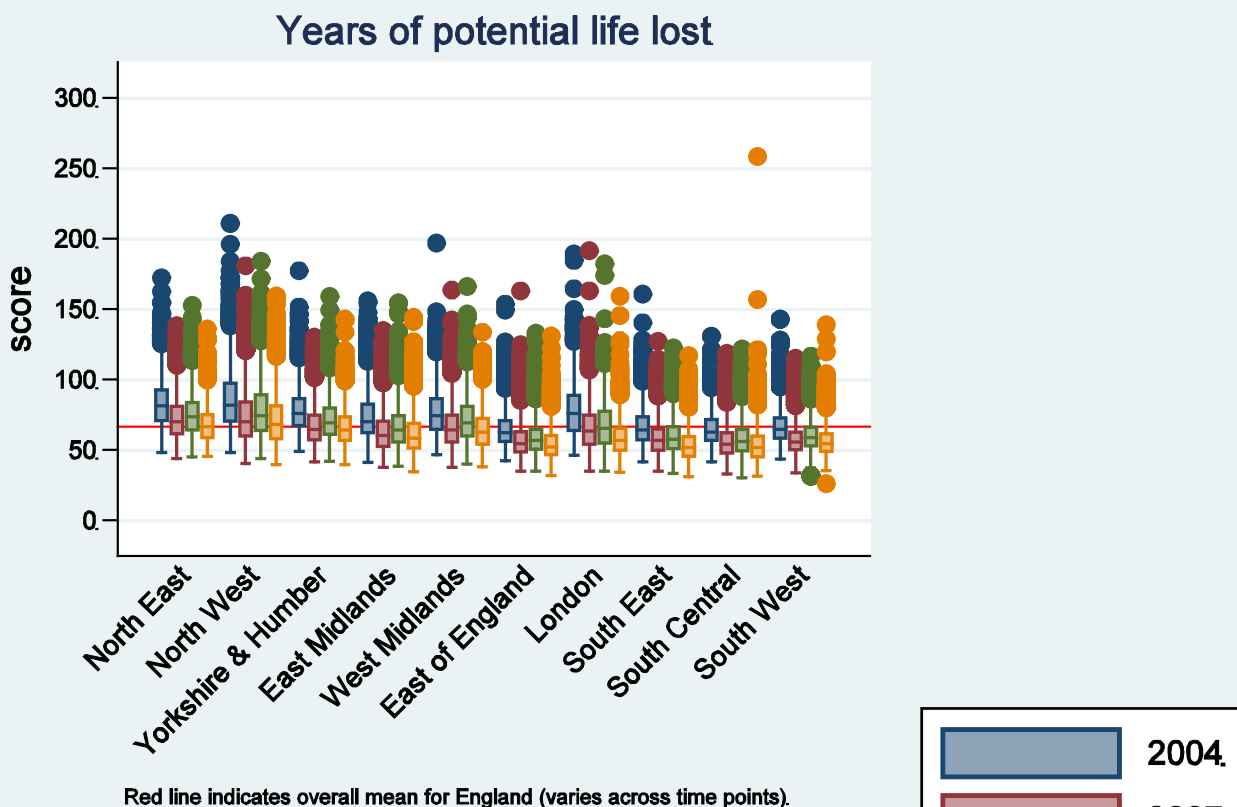
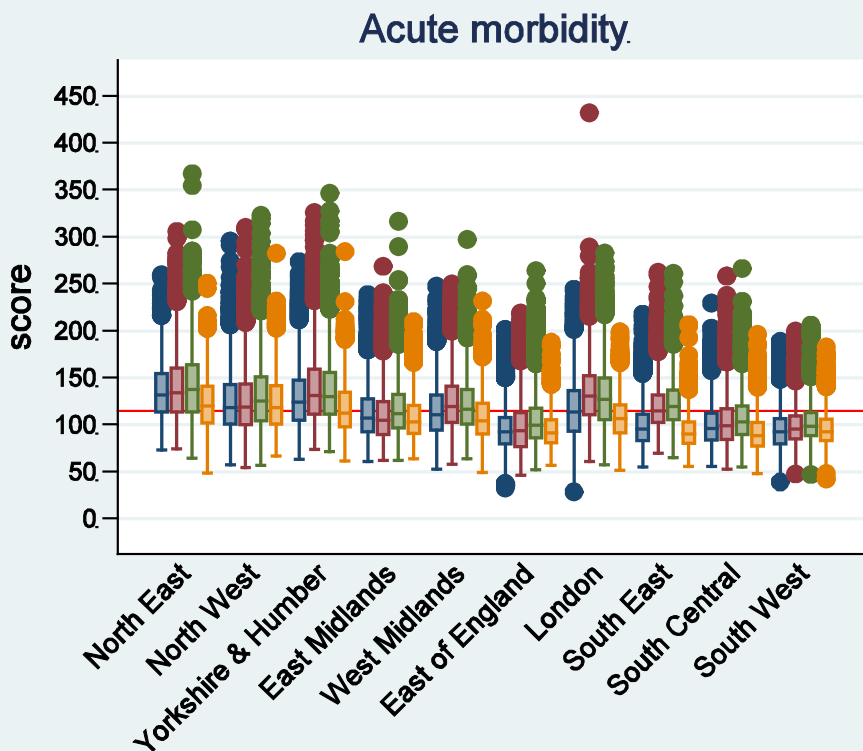
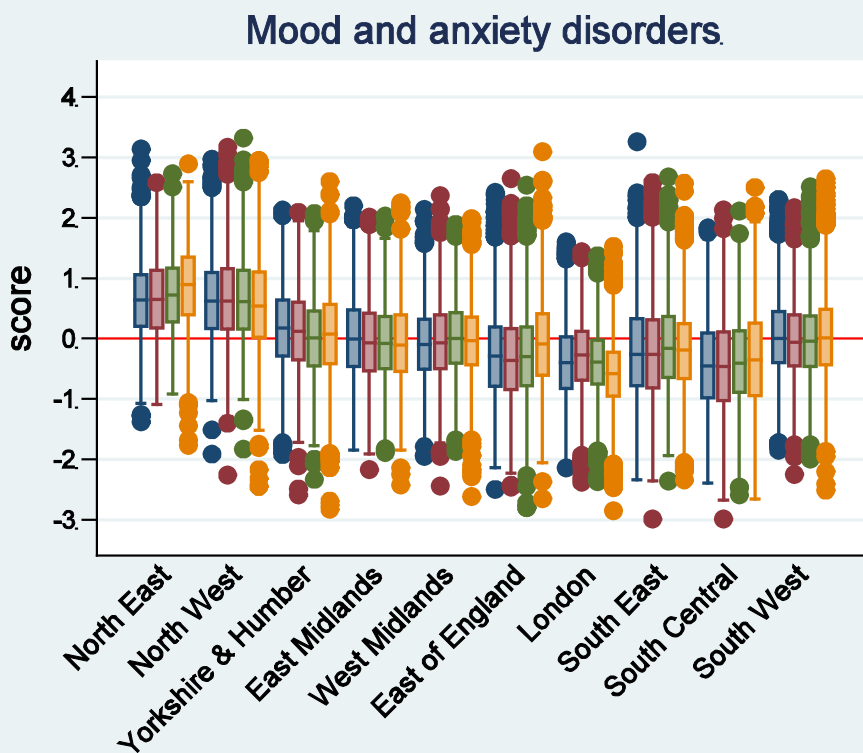
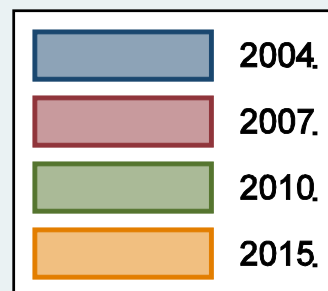


Figure A4: Health-related deprivation subdomains for English regions, over time (2 of 2)



Red line indicates overall mean for England (varies across time points).



Red line indicates mean for England which is the same across all time points.

Figure A5: Spatial autocorrelation with Moran's I for years of potential life lost (top) and the comparative illness and disability ratio (bottom), by region and over time

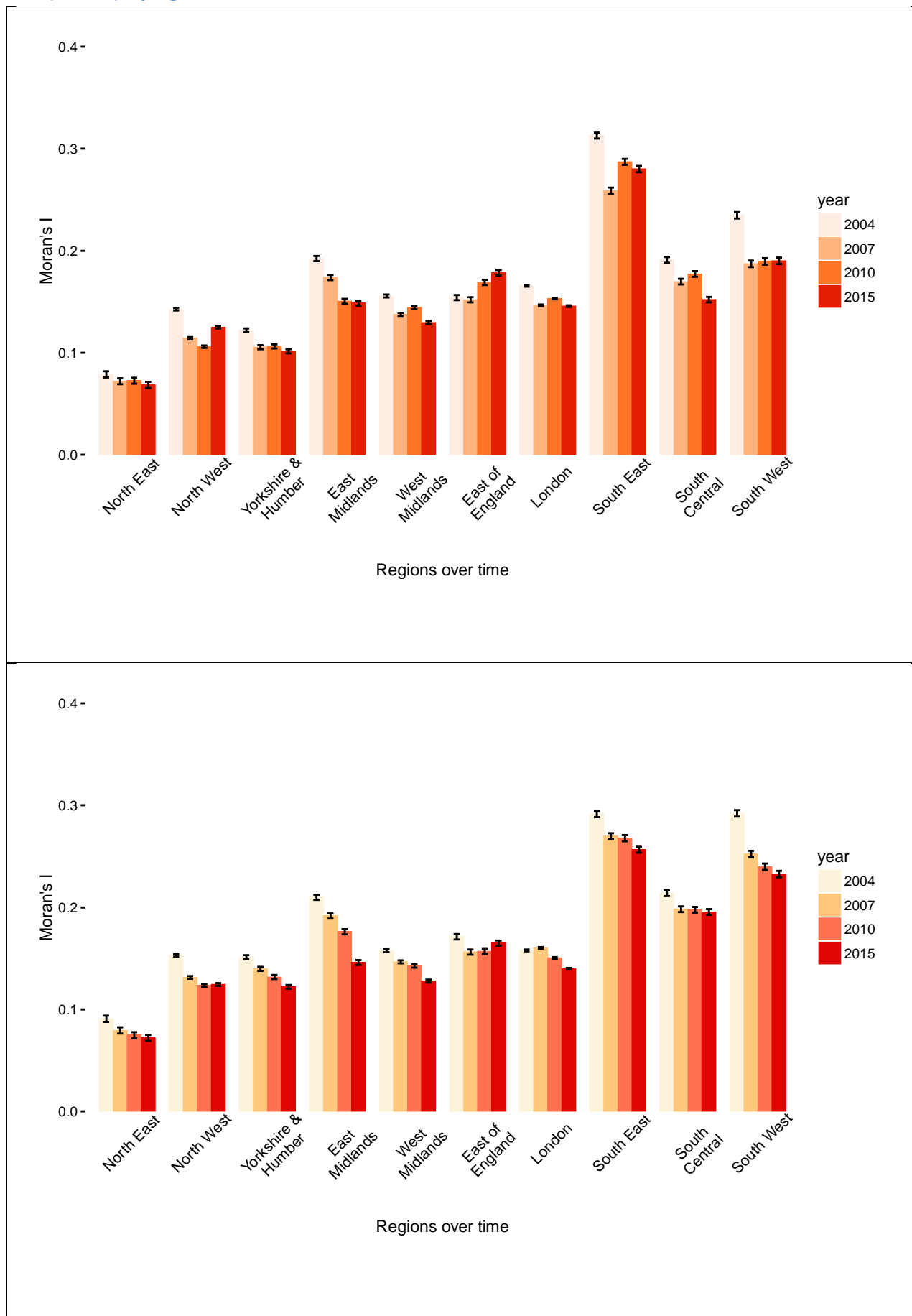


Figure A6: Spatial autocorrelation with Moran's I for acute morbidity (top) and mood and anxiety disorders (bottom), by region and over time

