

Appendix: Mexico's Epidemic of Violence and its Public Health Significance on Average Length of Life

Abstract

In this appendix, we offer additional information not presented in the main paper. First, survival functions with smoothed and observed prevalence rates of vulnerability fitted with local polynomial regressions for females and males in the state and home status in 2014 are shown in Figure 1A. Second, Table 1A presents the smoothed and unsmoothed life expectancies with vulnerability for each of the levels (state/home), years (2005, 2010 and 2014) and genders. Table 1A also includes the root mean square errors (RMSE) of differences between person-years with vulnerability smoothed and observed for each of the categories (by level, year and time). As mentioned in the main text the results of Figure 1A and Table 1A are part of a sensitivity analysis that allowed us to confirm the robustness of our results. Third, we include here a full version of Table 2 from the text (Table 2A here) presenting the detailed life expectancies by age and the male person-years by vulnerability at the state and home levels in 2005, 2010 and 2014, analogous to those shown for females in Figure 2 (Figure 2A here).

List of Figures and Tables

Figure 1A: Smoothed and observed person-years lived with and without vulnerability at the state and home levels for Mexican females and males aged 20 and older in 2014

Table 1A: Smoothed and observed Mexican life expectancies with vulnerability

Table 2A: Mexican life expectancy with and without vulnerability

Figure 2A: Person-years lived with and without vulnerability at the state (top row), and home (bottom row) levels for Mexican males aged 20 and older in 2005 and 2014

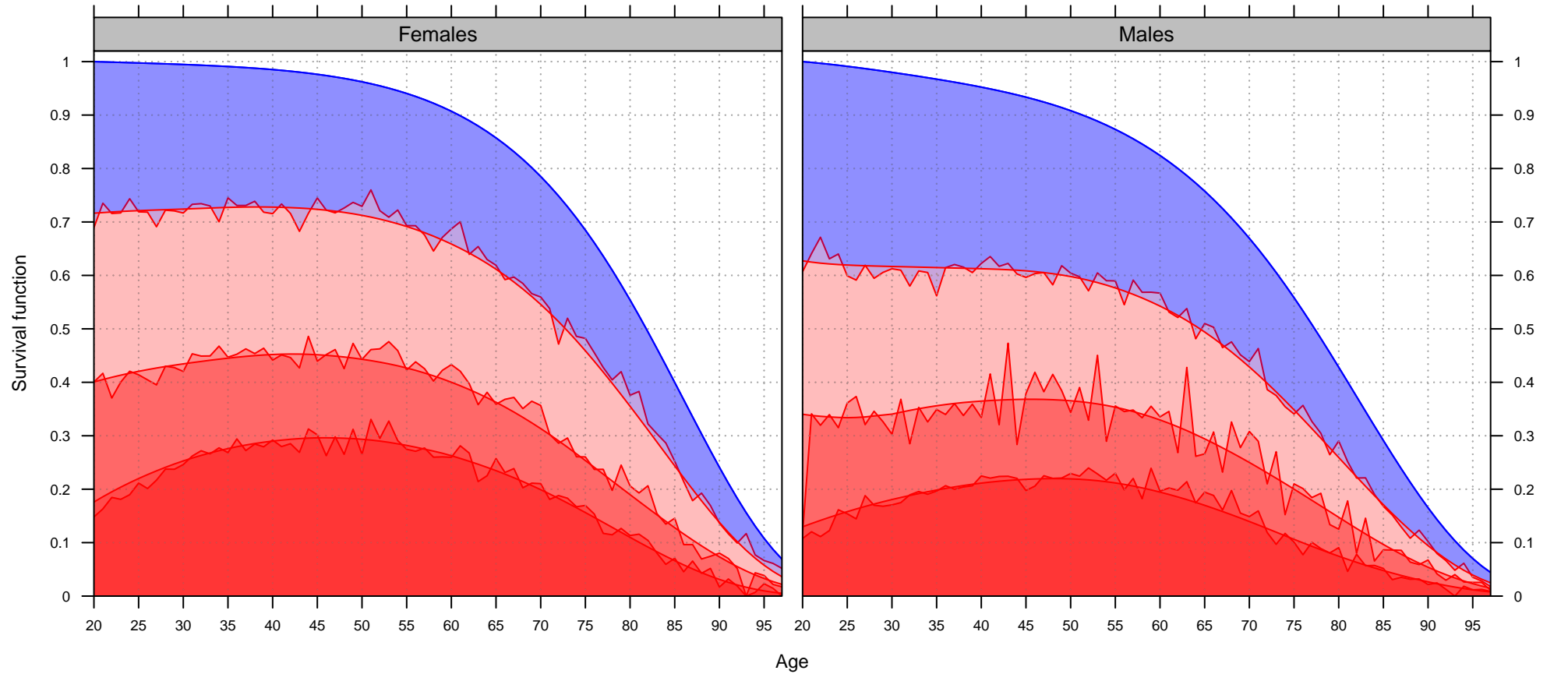


TABLE 1A- Observed and smoothed Mexican life expectancies with vulnerability, 2005, 2010 and 2014.

		Vulnerable expectancy at age 20					
Year		State			Home		
		Observed	Smoothed	RMSE	Observed	Smoothed	RMSE
Females	2005	30.1	30.4	0.03	8.4	8.6	0.02
	2010	39.8	40.0	0.02	11.7	11.9	0.02
	2014	42.3	42.5	0.02	15.3	15.3	0.01
Males	2005	24.9	25.2	0.04	6.5	6.5	0.02
	2010	34.0	34.2	0.02	8.6	8.8	0.02
	2014	34.6	34.8	0.02	11.1	11.4	0.01

Source: The ENSI-2005, ENSI-2010 and ENVIPE-2014 surveys, and period life tables.

RMSE is the root mean square errors of differences between person-years with vulnerability observed and smoothed for each of the categories (by level, year and sex)

TABLE 2A - Mexican life expectancy with and without vulnerability at selected ages, 2005, 2010 and 2014.

	Age	Life expectancy (95% CI)	Vulnerable expectancy (95% CI)		Vulnerable expectancy (% of total)	
			State	Home	State	Home
2005						
Females	20	59.2 (59.2 to 59.3)	30.1 (29.7 to 30.5)	8.4 (8.2 to 8.7)	51	14
	30	49.5 (49.5 to 49.6)	24.8 (24.4 to 25.2)	6.8 (6.6 to 7.1)	50	14
	40	40.0 (40.0 to 40.1)	19.4 (19.1 to 19.9)	5.2 (5.1 to 5.6)	49	13
	50	30.8 (30.8 to 30.9)	14.3 (14.0 to 14.7)	3.8 (3.6 to 4.0)	46	12
	60	22.4 (22.4 to 22.5)	9.6 (9.3 to 10.0)	2.4 (2.3 to 2.7)	43	11
	70	15.1 (15.1 to 15.1)	5.7 (5.4 to 6.2)	1.4 (1.3 to 1.7)	38	10
	80	9.2 (9.2 to 9.3)	2.9 (2.5 to 3.4)	0.7 (0.5 to 1.0)	31	8
	90	5.1 (5.1 to 5.2)	1.1 (0.5 to 1.8)	0.3 (0.0 to 0.7)	22	6
	Males	20	54.4 (54.4 to 54.5)	24.9 (24.5 to 25.4)	6.5 (6.3 to 6.9)	46
30		45.4 (45.4 to 45.5)	20.4 (20.0 to 20.8)	5.3 (5.1 to 5.7)	45	12
40		36.5 (36.5 to 36.6)	15.9 (15.6 to 16.4)	4.1 (3.9 to 4.4)	44	11
50		28.0 (28.0 to 28.1)	11.7 (11.4 to 12.1)	3.0 (2.8 to 3.3)	42	11
60		20.2 (20.2 to 20.3)	8.0 (7.7 to 8.4)	2.1 (1.9 to 2.4)	40	11
70		13.7 (13.7 to 13.8)	4.9 (4.6 to 5.3)	1.4 (1.3 to 1.7)	36	11
80		8.6 (8.6 to 8.7)	2.6 (2.2 to 3.0)	1.0 (0.7 to 1.4)	30	12
90		4.8 (4.8 to 4.9)	0.9 (0.4 to 1.5)	0.6 (0.2 to 1.1)	20	14
2010						
Females	20	59.3 (59.3 to 59.4)	39.8 (39.4 to 40.2)	11.7 (11.5 to 12.1)	67	20
	30	49.6 (49.6 to 49.7)	33.3 (33.0 to 33.7)	10.1 (9.8 to 10.4)	67	20
	40	40.1 (40.1 to 40.2)	26.6 (26.3 to 27.0)	8.1 (7.9 to 8.4)	66	20
	50	30.9 (30.9 to 31.0)	20.0 (19.7 to 20.4)	6.0 (5.8 to 6.3)	65	20
	60	22.5 (22.5 to 22.5)	14.0 (13.7 to 14.4)	4.1 (3.9 to 4.4)	62	18
	70	15.1 (15.1 to 15.2)	8.9 (8.6 to 9.3)	2.5 (2.3 to 2.8)	59	17
	80	9.3 (9.3 to 9.4)	5.1 (4.8 to 5.5)	1.4 (1.2 to 1.7)	55	16
	90	5.1 (5.1 to 5.2)	2.4 (2.0 to 2.9)	0.7 (0.4 to 1.1)	47	15
	Males	20	53.8 (53.8 to 53.9)	34.0 (33.6 to 34.4)	8.6 (8.4 to 8.9)	63
30		45.1 (45.1 to 45.2)	28.5 (28.2 to 28.9)	7.5 (7.3 to 7.8)	63	17
40		36.4 (36.4 to 36.5)	22.8 (22.5 to 23.3)	6.1 (5.9 to 6.4)	63	17
50		28.0 (28.0 to 28.0)	17.2 (16.9 to 17.6)	4.5 (4.4 to 4.8)	62	16
60		20.2 (20.2 to 20.3)	12.0 (11.7 to 12.4)	3.1 (2.9 to 3.3)	59	15
70		13.6 (13.6 to 13.7)	7.6 (7.3 to 8.0)	1.8 (1.7 to 2.1)	56	14
80		8.5 (8.5 to 8.6)	4.4 (4.1 to 4.8)	1.0 (0.8 to 1.3)	52	12
90		4.8 (4.8 to 4.8)	2.1 (1.6 to 2.7)	0.5 (0.2 to 0.9)	45	11
2014						
Females	20	59.5 (59.0 to 60.1)	42.3 (41.6 to 43.0)	15.3 (15.0 to 15.8)	71	26
	30	49.8 (49.3 to 50.4)	35.3 (34.7 to 35.9)	13.2 (12.9 to 13.7)	71	27
	40	40.3 (39.8 to 40.8)	28.2 (27.7 to 28.9)	10.6 (10.3 to 11.0)	70	26
	50	31.1 (30.7 to 31.5)	21.4 (20.9 to 22.0)	7.8 (7.5 to 8.2)	69	25
	60	22.6 (22.3 to 23.0)	15.1 (14.7 to 15.6)	5.2 (4.9 to 5.5)	67	23
	70	15.3 (15.1 to 15.5)	9.7 (9.3 to 10.1)	3.0 (2.8 to 3.3)	64	20
	80	9.4 (9.3 to 9.6)	5.5 (5.2 to 5.9)	1.4 (1.2 to 1.7)	59	15
	90	5.1 (5.1 to 5.2)	2.5 (2.1 to 3.0)	0.4 (0.2 to 0.8)	49	10
	Males	20	54.4 (53.7 to 55.1)	34.6 (34.0 to 35.4)	11.1 (10.8 to 11.5)	64
30		45.4 (44.8 to 46.0)	29.0 (28.4 to 29.7)	9.8 (9.4 to 10.2)	64	22
40		36.6 (36.1 to 37.1)	23.4 (22.9 to 24.1)	8.0 (7.7 to 8.4)	64	22
50		28.1 (27.7 to 28.5)	17.9 (17.4 to 18.4)	6.0 (5.7 to 6.3)	64	21
60		20.4 (20.1 to 20.7)	12.7 (12.3 to 13.2)	4.1 (3.8 to 4.4)	63	20
70		13.8 (13.7 to 14.1)	8.3 (8.0 to 8.8)	2.5 (2.3 to 2.8)	60	18
80		8.7 (8.6 to 8.9)	5.0 (4.6 to 5.4)	1.4 (1.2 to 1.7)	57	16
90		4.9 (4.9 to 5.0)	2.4 (2.0 to 2.9)	0.7 (0.4 to 1.1)	50	14

Source: The ENSI-2005, ENSI-2010 and ENVIPE-2014 surveys, and period life tables.

