

## Supplementary Figures

**Journal:** Journal of Epidemiology and Community Health

Jesús-Daniel Zazueta-Borboa<sup>1\*</sup>, Pekka Martikainen<sup>2,3</sup>, José Manuel Aburto<sup>4,5,6</sup>, Giuseppe Costa<sup>7</sup>,  
Riina Peltonen<sup>2</sup>, Nicolás Zengarini<sup>7</sup>, Alison Sizer<sup>8</sup>, Anton E. Kunst<sup>9</sup>, Fanny Janssen<sup>1,10</sup>

<sup>1</sup> Netherlands Interdisciplinary Demographic Institute – KNAW/University of Groningen, Lange Houtstraat 19, 2511 CV The Hague, The Netherlands.

<sup>2</sup> Population Research Unit, Faculty of Social Sciences, University of Helsinki, Finland

<sup>3</sup> Max Planck Institute for Demographic Research, Rostock, Germany

<sup>4</sup> Department of Population Health, London School of Hygiene and Tropical Medicine, London, United Kingdom

<sup>5</sup> Leverhulme Centre for Demographic Science, University of Oxford, Oxford, United Kingdom

<sup>6</sup> Interdisciplinary Centre on Population Dynamics, Southern Denmark University, Odense, Denmark

<sup>7</sup> Epidemiology Unit, ASL TO3, Piedmont Region, Grugliasco (TO), Italy.

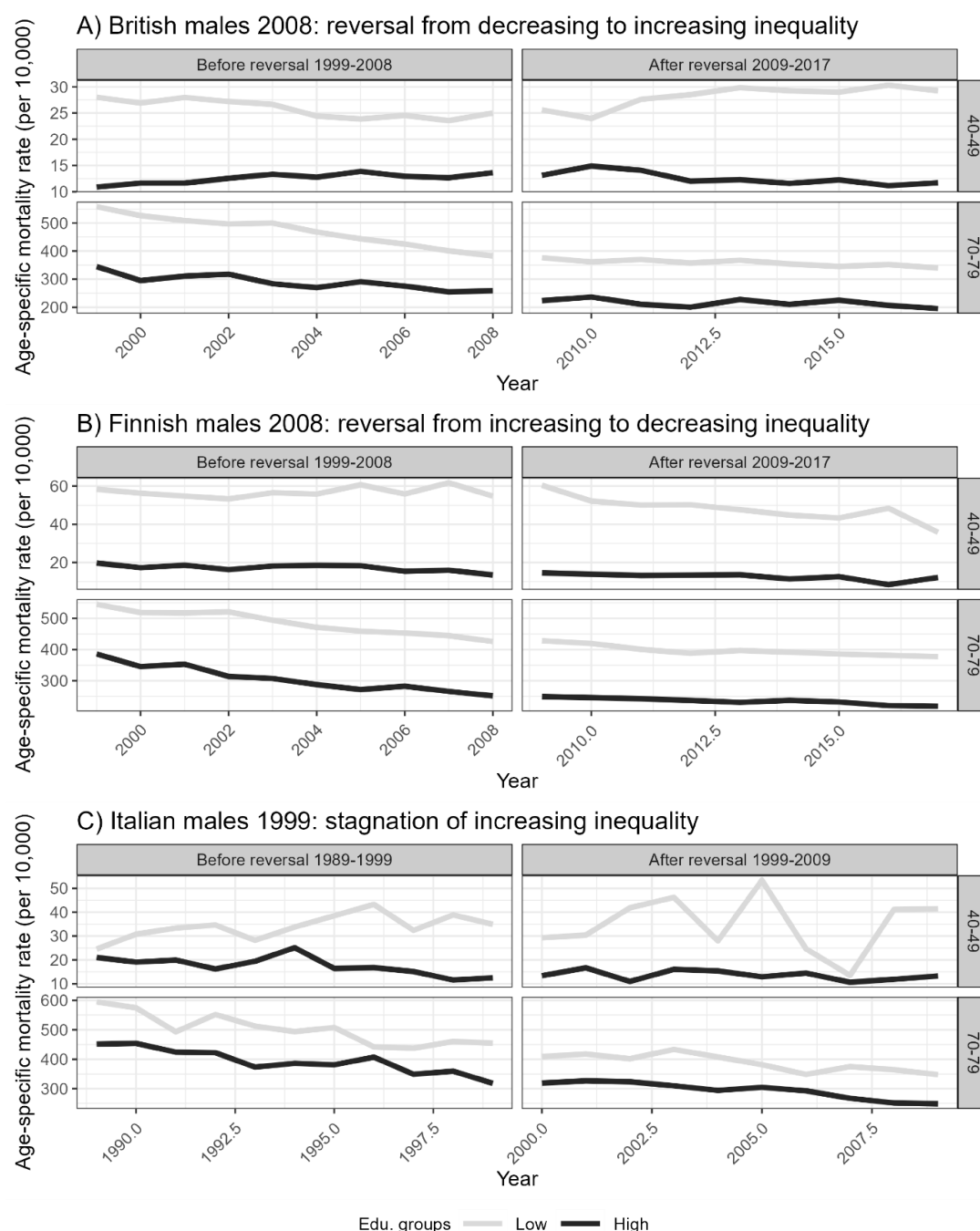
<sup>8</sup> Department of Information Studies, University College London, United Kingdom.

<sup>9</sup> Department of Public and Occupational Health, Amsterdam UMC, University of Amsterdam, Amsterdam, The Netherlands.

<sup>10</sup> Population Research Centre, Faculty of Spatial Sciences, University of Groningen, The Netherlands

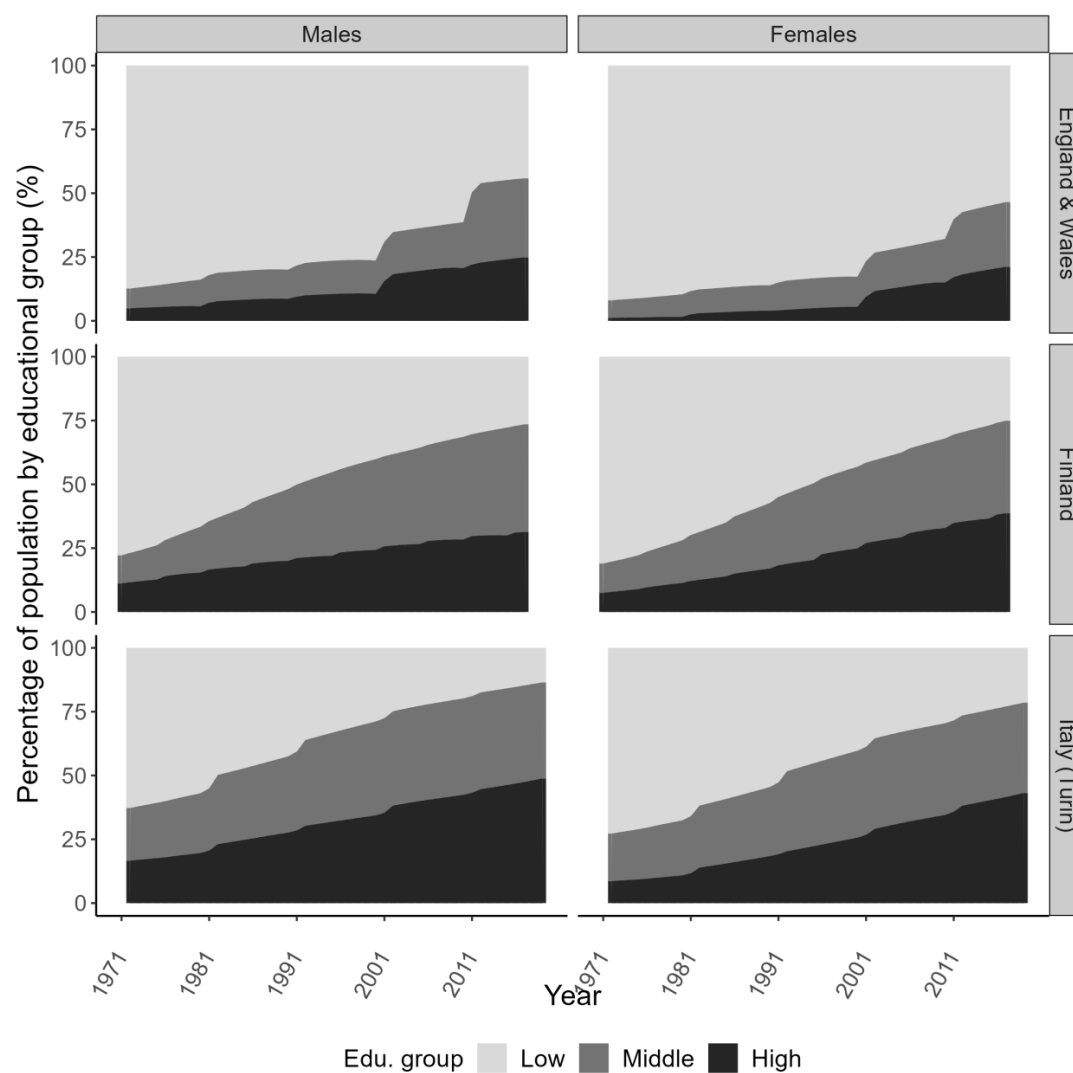
\* corresponding author

Figure S1 Trends in age-specific death rates per 10,000 for the low and high-educated at younger (40-49) versus older ages (70-79) before and after the trend breaks in long-term trends in educational inequalities in e30.



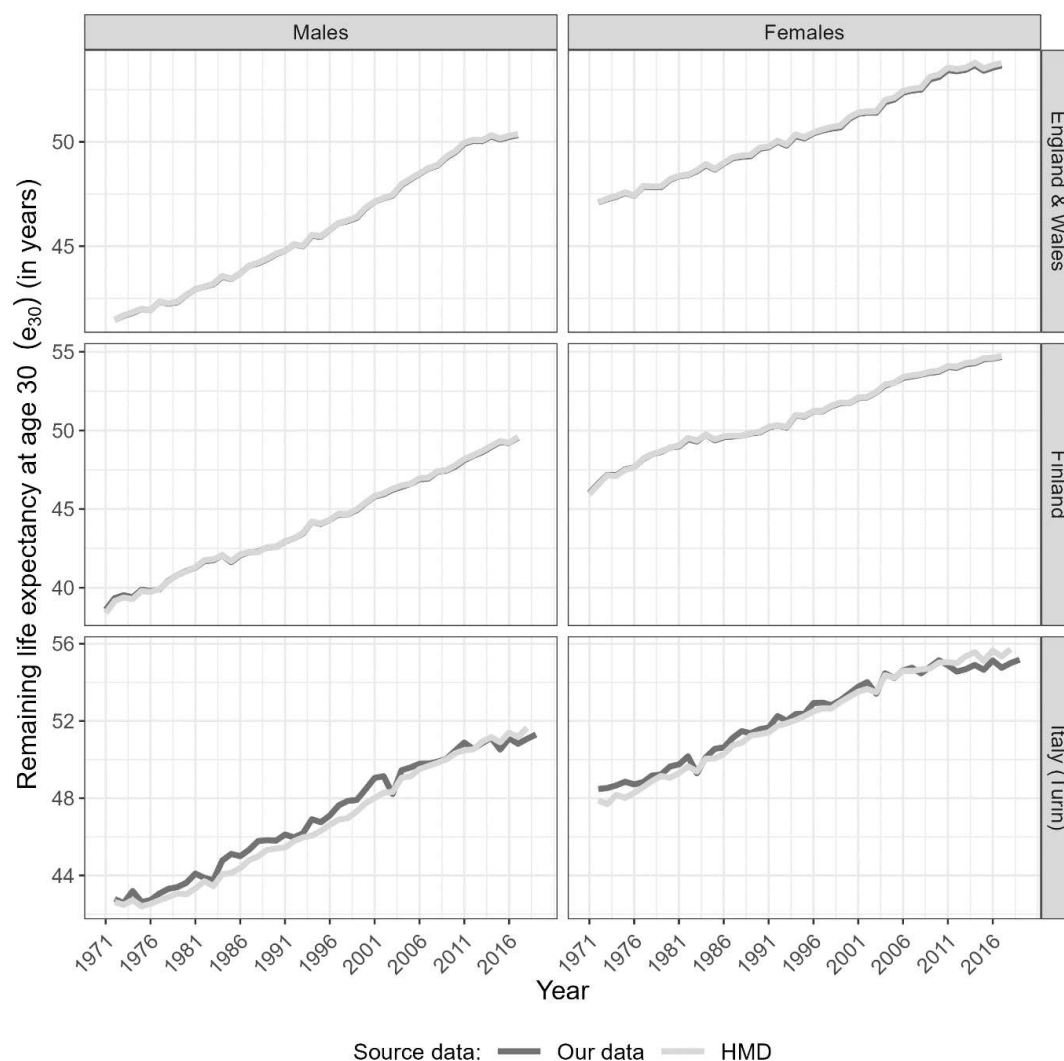
Source data: ONS Longitudinal Study, Statistics Finland & Turin Longitudinal Study.

Figure S2. Trends over time in the share of the population by educational attainment group (%), for those aged 30 and older, by sex and country. England & Wales 1972-2017, Finland 1971-2017 & Italy (Turin) 1972-2019.



Source data: ONS Longitudinal Study, Statistics Finland & Turin Longitudinal Study.

Figure S3. Comparison of trends in life expectancy at age 30 ( $e_{30}$ ) for the three educational attainment groups combined based on the final data used versus the national data from the Human Mortality Database, for those aged 30 and older, by sex and country. England & Wales 1972-2017 (adjusted data), Finland 1971-2017 & Italy (Turin) 1972-2019.



Source data: ONS Longitudinal Study, Statistics Finland, Turin Longitudinal Study & HMD.