

Supplementary File:*Supplementary File 1: Results for the difference-in-difference analysis over time for road traffic collisions*

| Site | IRR (95% CI) |
|----------------------------------|---------------------|
| Control site (City centre) | 1.01 (0.81,1.26) |
| Control site (Metropolitan area) | 0.97 (0.81,1.16) |
| Matched control | 0.90 (0.64,1.27) |

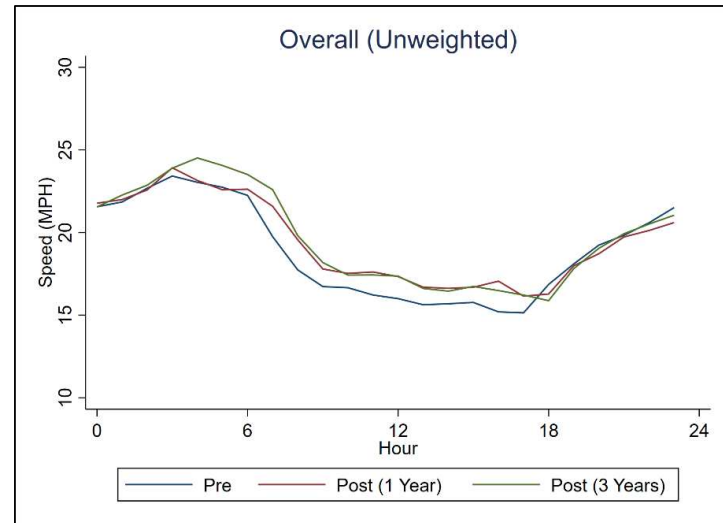
CI: Confidence Interval; IRR: Incidence Rate Ratio.

Supplementary File 2: Results for the difference-in-difference analysis over time for road traffic casualties

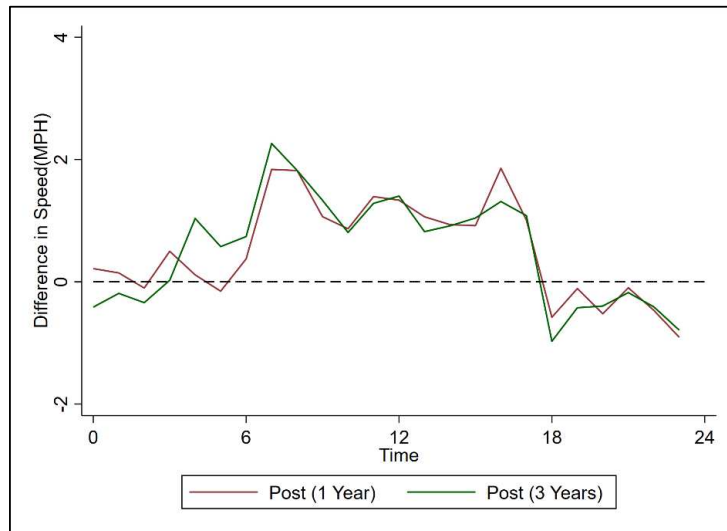
| Site | IRR (95% CI) |
|----------------------------------|---------------------|
| Control site (City centre) | 1.02 (0.84,1.25) |
| Control site (Metropolitan area) | 0.96 (0.82,1.12) |
| Matched control | 0.84 (0.62,1.15) |

CI: Confidence Interval; IRR: Incidence Rate Ratio.

Supplementary File 3: Mean traffic speed over 24 hour period at pre-implementation, 1 and 3 years post-implementation



Supplementary File 4: Mean difference in traffic speed at 1 and 3 years post-implementation



Supplementary File 5: Data Availability

The table below shows the data available for each intervention street for traffic speed and volume pre-implementation, year 1 and year 3 post-implementation periods.

| Street | Speed | | | Volume | | |
|----------------------------|--------------------|----------------------------|-----------------------------|--------------------|----------------------------|-----------------------------|
| | Pre-implementation | 1 year post-implementation | 3 years post-implementation | Pre-implementation | 1 year post-implementation | 3 years post-implementation |
| Chichester Street | ✓ | ✓ | ✓ | ✓ | ✓ | ✓ |
| Donegall Place | ✓ | ✓ | ✓ | ✓ | ✓ | ✓ |
| Donegall Street | ✓ | ✓ | ✓ | ✓ | ✓ | ✓ |
| Howard Street | ✓ | ✓ | ✓ | ✓ | ✓ | ✓ |
| May Street | ✓ | ✓ | ✓ | ✓ | ✓ | ✓ |
| Queen Street | ✓ | ✓ | ✓ | ✓ | ✓ | ✓ |
| Royal Avenue | ✓ | ✓ | ✓ | ✓ | ✓ | ✓ |
| Wellington Place | ✓ | ✓ | ✓ | ✓ | ✓ | ✓ |
| York Street | ✓ | ✓ | ✓ | ✓ | ✓ | ✓ |
| High Street | ✓ | ✓ | ✓ | X | ✓ | ✓ |
| North Street | ✓ | X | ✓ | ✓ | ✓ | ✓ |
| College Ave Millifield | ✓ | X | X | ✓ | X | X |
| Dunbar Link | ✓ | X | X | ✓ | X | X |
| Royal Ave Control | ✓ | X | X | ✓ | X | X |
| Overall (Unweighted) | ✓ | ✓ | ✓ | X | X | X |
| College Ave | ✓ | X | X | X | X | X |
| College Ave two | ✓ | X | X | X | X | X |
| Victoria St | ✓ | X | X | X | X | X |
| Victoria St Carriageway | ✓ | X | X | X | X | X |
| Victoria St at Mboro | ✓ | X | X | X | X | X |
| College Ave City bounc | X | X | X | ✓ | X | X |
| College Ave College Square | X | X | X | ✓ | X | X |
| Overall | ✓ | ✓ | ✓ | ✓ | ✓ | ✓ |

