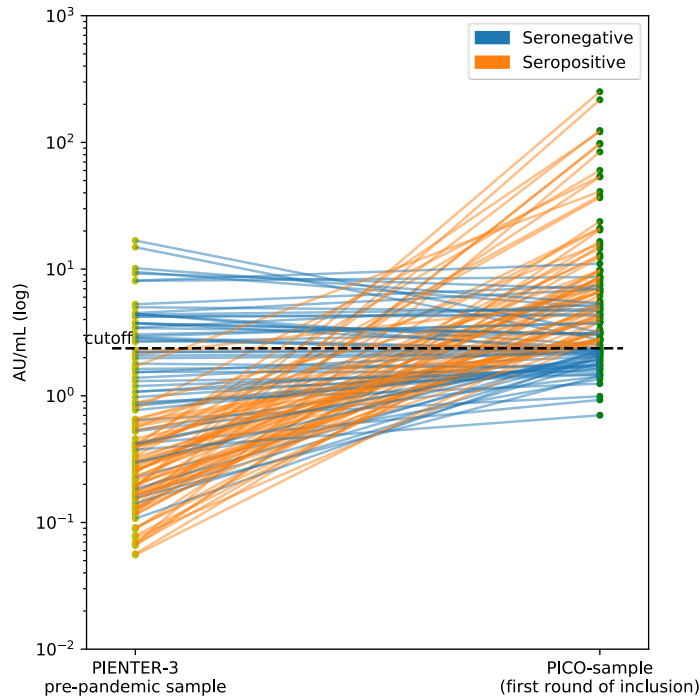
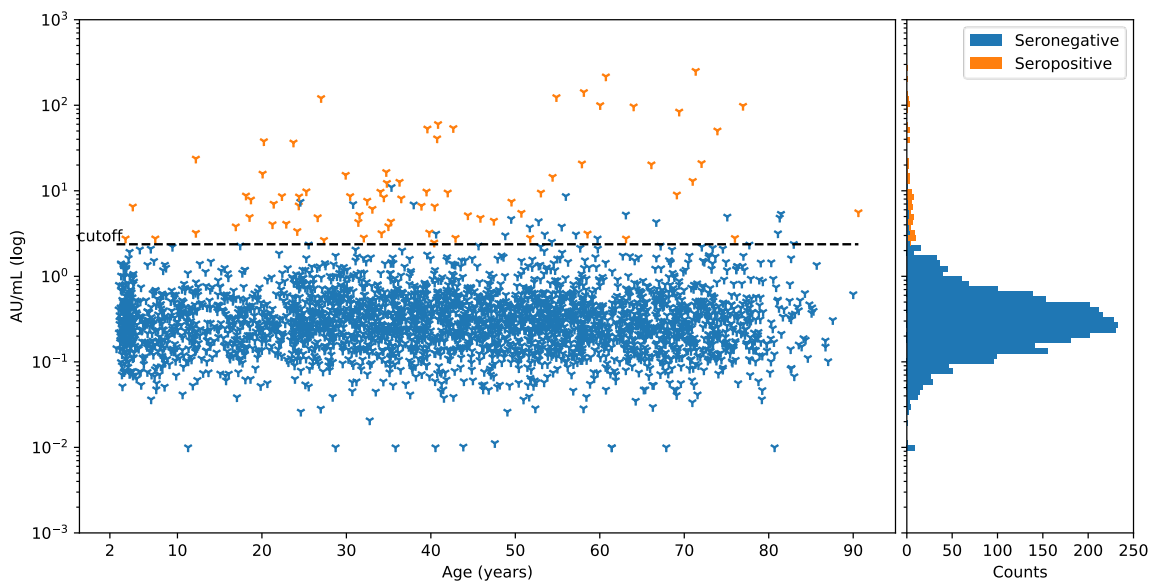
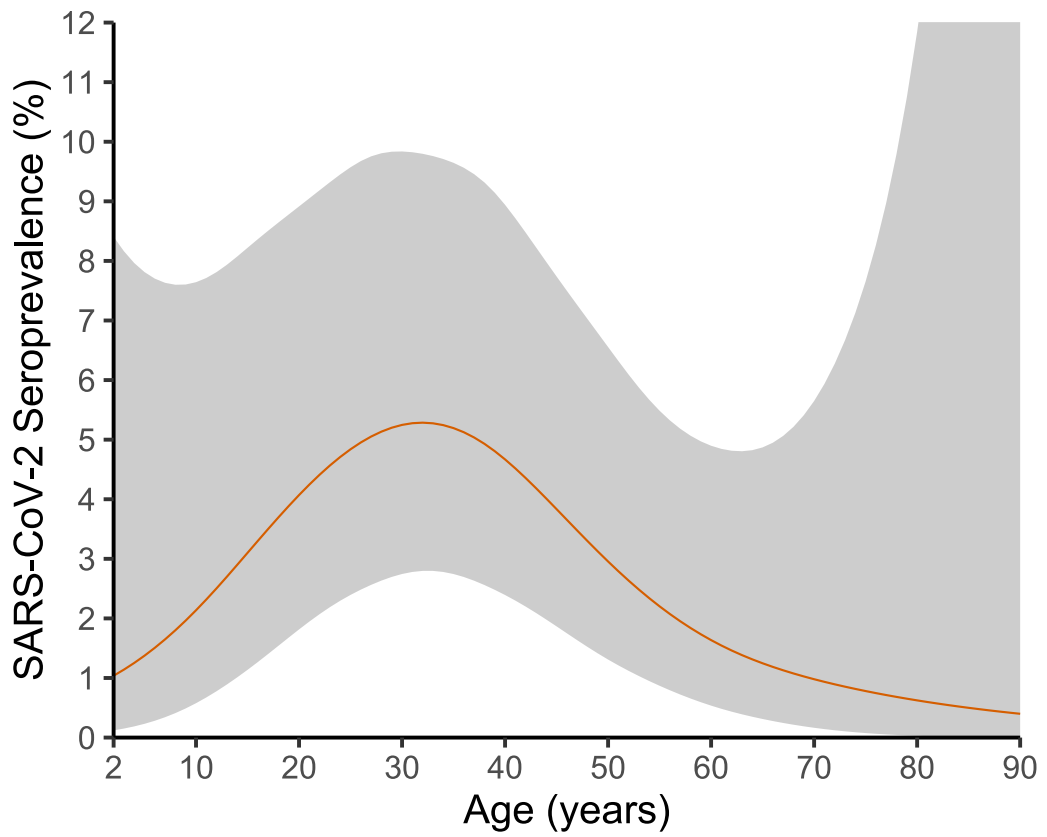


a**b**

FigureS1. IgG antibody concentration (AU/mL) against SARS-CoV-2 of matched pre-pandemic PIENTER-3-samples (light green dots) and current PICO-samples (dark green dots) that were seropositive or 25% below the cutoff for seropositivity after the first measure ($n=138$) (a). PICO-samples with seropositive pre-pandemic sera (based on the calculated cutoff by ROC-analysis) were considered seronegative ($n=26$), thereby correcting for false-positivity. To note: a maximum concentration-fold increase of 1.5 was observed between a false-positive PIENTER-3-sample and its corresponding PICO-sample. Blue and orange lines represent seronegative and seropositive samples, respectively, and the dashed line depicted is considered the cutoff for seropositivity (2.37 AU/mL). (b) IgG antibody concentration (AU/mL (log)) against SARS-CoV-2 of all individual PICO-samples, by age (years) (left side) and distributed by means of a histogram (right side). After correction for pre-pandemic cross-reactivity, samples were classified as seronegative (blue) and seropositive (orange). The dashed line depicted is considered the cutoff for seropositivity (2.37 AU/mL).



FigureS2. Smooth age-specific SARS-CoV-2 seroprevalence in the low vaccination coverage municipalities of the Netherlands, beginning of April 2020.