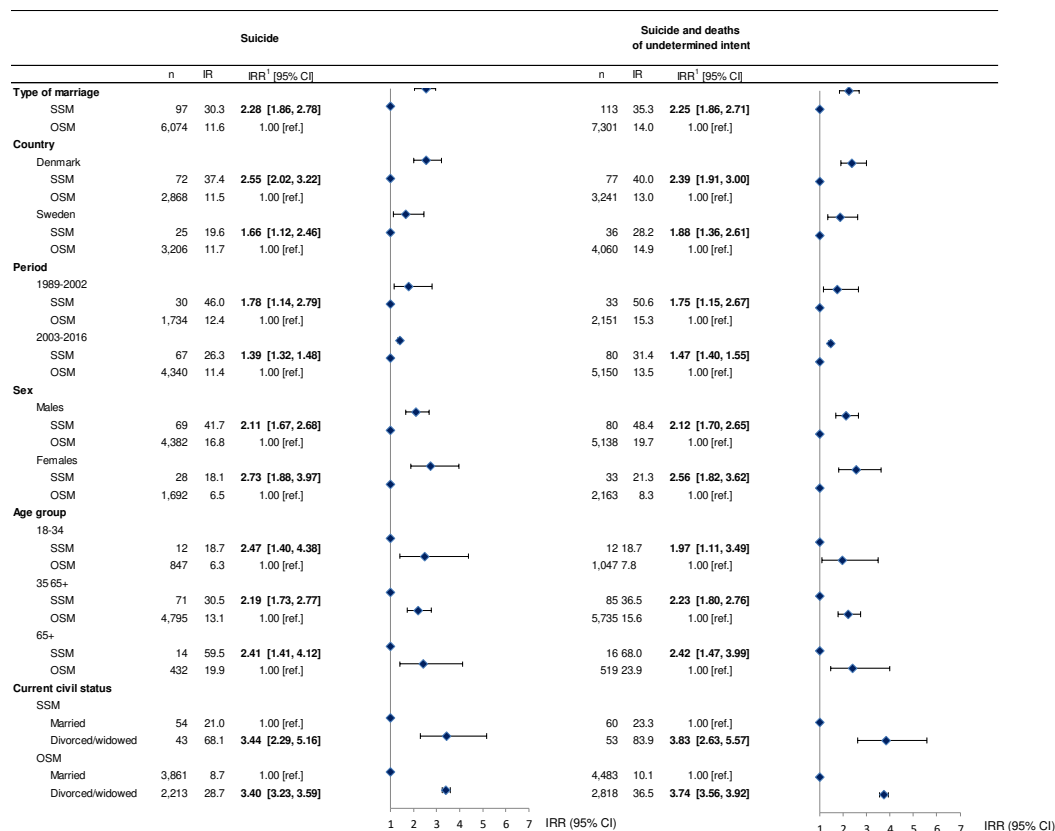


Supplementary Figure 1. Incidence rates and incidence rate ratios by type of marriage, country, period, sex, age group, and current civil status. Interactions estimated with OSM as reference level in each covariate category.¹



Abbreviation: IR: Incidence rate per 100,000 person-years; IRR: Incidence rate ratio. SSM: Same-sex married. OSM: opposite-sex married.

¹ We adjusted for the following covariates: country, period, sex, age group, current civil status. In each interaction model the covariates that were not a part of the main model (presented) were included as adjusting covariates. For instance, when examining for interaction effects between country and type of marriage, the model was adjusted for period, sex, age group, and current civil status.