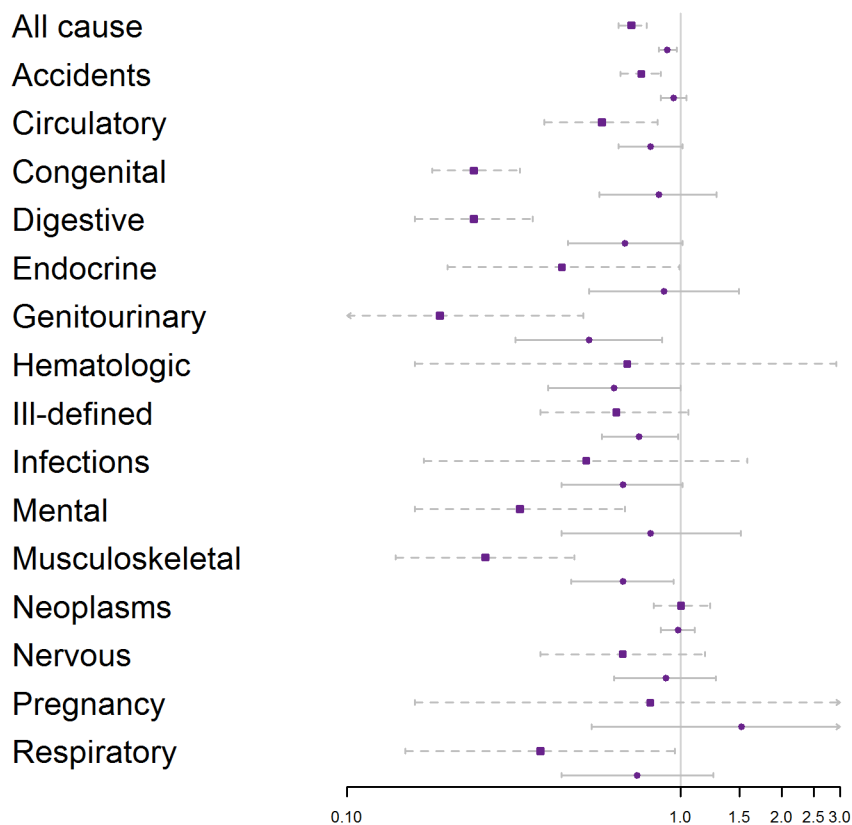


a) Women

**Cause of Death**



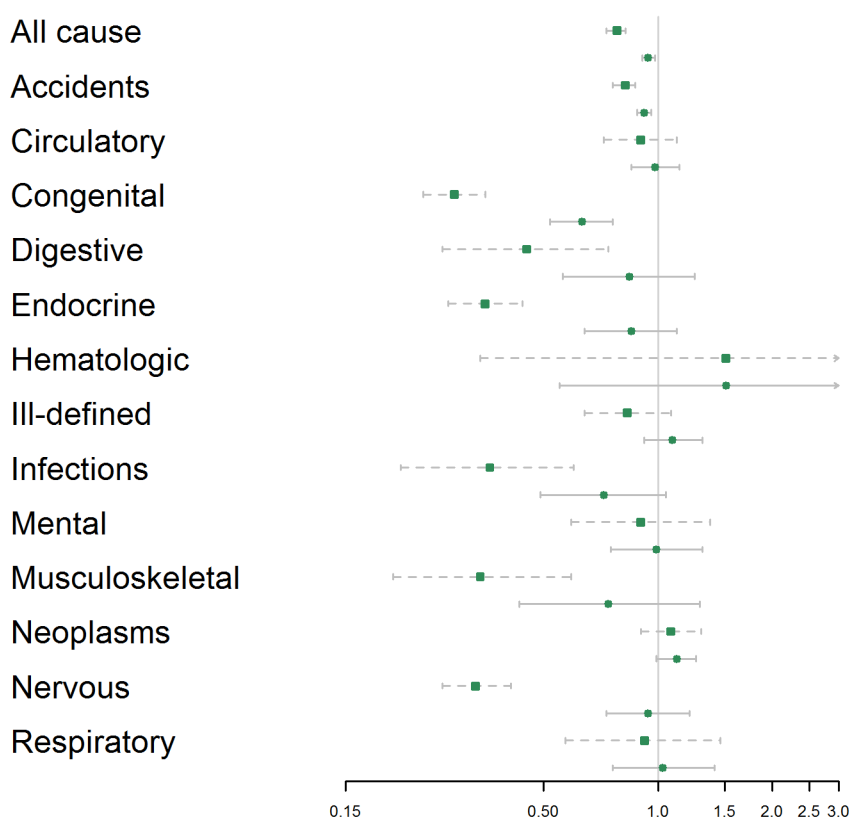
**Hazard Ratio (95% CI)**

**Events**

0.71 (0.65-0.79)	1,052
0.91 (0.86-0.97)	526
0.76 (0.66-0.87)	64
0.95 (0.87-1.04)	22
0.58 (0.39-0.85)	12
0.81 (0.65-1.01)	14
0.24 (0.18-0.33)	2
0.86 (0.57-1.28)	5
0.24 (0.16-0.36)	40
0.68 (0.46-1.01)	8
0.44 (0.20-0.99)	8
0.89 (0.53-1.49)	11
0.19 (0.07-0.51)	291
0.53 (0.32-0.88)	32
0.69 (0.16-2.91)	4
0.63 (0.40-1.00)	9

b) Men

**Cause of Death**



**Hazard Ratio (95% CI)**

**Events**

0.78 (0.73-0.82)	2,642
0.94 (0.91-0.98)	1,810
0.82 (0.76-0.87)	176
0.92 (0.88-0.96)	24
0.90 (0.72-1.12)	19
0.98 (0.85-1.14)	39
0.29 (0.24-0.35)	4
0.63 (0.52-0.76)	129
0.45 (0.27-0.74)	12
0.84 (0.56-1.25)	50
0.35 (0.28-0.44)	7
0.85 (0.64-1.12)	269
1.51 (0.34-6.64)	55
1.51 (0.55-4.12)	41