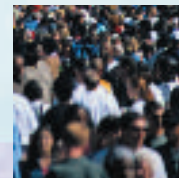
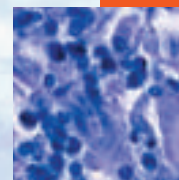


In this issue753 *C Alvarez-Dardet, J R Ashton***Editorials**754 "The Public Health Call"
*G Scally*755 Assessing the social meaning, value and implications of research in genomics
*B Lumbreras, M Porta, I Hernández-Aguado***Research agenda**757 Genetic and molecular epidemiology
*J P A Ioannidis***Public health past and present**759 Equality and difference: persisting historical themes in health and alcohol policies affecting Indigenous Australians
*M Brady***The JECH gallery**763 Double standards in sex: differences between social expectation and practice among early school leavers
*W C W Wong***Aphorism of the month**796 *L Levin***Speakers' corner**832 Bringing chronic disease epidemiology and infectious disease epidemiology back together
*B C K Choi, H Morrison, T Wong, J Wu, Y-P Yan***Glossary**764 Violence: a priority for public health? (part 2)
*A Rutherford, A B Zwi, N J Grove, A Butchart***Evidence-based public health policy and practice**771 The Watcombe Housing Study: the short term effect of improving housing conditions on the health of residents
*A Barton, M Basham, C Foy, K Buckingham, M Somerville, on behalf of the Torbay Healthy Housing Group*778 Randomised controlled trial of home-based walking programmes at and below current recommended levels of exercise in sedentary adults
*M A Tully, M E Cupples, N D Hart, J McEneny, K J McGlade, W-S Chan, I S Young*784 Factors associated with the activities of safety representatives in Spanish workplaces
*A M García, M José López-Jacob, I Dudzinski, R Gadea, F Rodrigo*791 Measuring the performance of urban healthcare services: results of an international experience
*A García-Altés, C Borrell, L Coté, A Plaza, J Benet, A Guarga, for the Montreal and Barcelona group on performance of healthcare services***Research reports**797 Ethnicity as a correlate of the uptake of the first dose of mumps, measles and rubella vaccine
*R E Mixer, K Jamrozik, D Newsom*802 Income inequality and the double burden of under- and overnutrition in India
*S V Subramanian, I Kawachi, G D Smith*810 High consumptions of grain, fish, dairy products and combinations of these are associated with a low prevalence of metabolic syndrome
*J-B Ruidavets, V Bongard, J Dallongeville, D Arveiler, P Ducimetière, B Perret, C Simon, P Amouyel, J Ferrières*818 Promoting walking to school: results of a quasi-experimental trial
R McKee, N Mutrie, F Crawford, B Green

Contents continued on inside back cover



journal of **Epidemiology**
& Community Health

Vol 61 No 9

Contents continued from outside back cover

- 824** A systematic review of the association between circulating concentrations of C reactive protein and cancer
K Heikkilä, S Ebrahim, D A Lawlor
- 833** Does consideration of either psychological or material disadvantage improve coronary risk prediction? Prospective observational study of Scottish men
J Macleod, C Metcalfe, G D Smith, C Hart
- PostScript**
- 838** Letters
- 839** Book reviews
- 840** **Hygieia**

www.jech.com