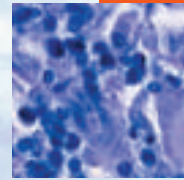


- In this issue**  
 657 *C Alvarez-Dardet, J R Ashton*
- Editorial**  
 658 Politics and health  
*C Borrell, A Espelt, M Rodriguez-Sanz, V Navarro*
- Aphorism of the month**  
 712 The age of Hygieia  
*L Levin*
- The JECH gallery**  
 718 Natural alternatives  
*D S Morrison, K Beard*
- Speaker's corner**  
 722 Publishing has become a "Russian roulette"  
*M Porta*
- Public health past and present**  
 660 Dirt, disgust and disease: a natural history of hygiene  
*V A Curtis*
- Continuing professional education**  
 665 Effect of socioeconomic status on the relationship between atmospheric pollution and mortality  
*O Laurent, D Bard, L Filleul, C Segala*  
 676 Violence: a glossary  
*A Rutherford, A B Zwi, N J Grove, A Butchart*
- Evidence based public health policy and practice**  
 681 Greenspace, urbanity and health: relationships in England  
*R Mitchell, F Popham*  
 684 A sense of coherence and health. Salutogenesis in a societal context: Åland, a special case?  
*M Eriksson, B Lindström, J Lilja*  
 689 Could targeted food taxes improve health?  
*O Mytton, A Gray, M Rayner, H Rutter*  
 695 Milk and dairy consumption, diabetes and the metabolic syndrome: the Caerphilly prospective study  
*P C Elwood, J E Pickering, A M Fehily*  
 699 Does the school fruit and vegetable scheme improve children's diet? A non-randomised controlled trial  
*J K Ransley, D C Greenwood, J E Cade, S Blenkinsop, I Schagen, D Teeman, E Scott, G White, S Schagen*
- 704** Age and follow-up time affect the prognostic value of the ECG and conventional cardiovascular risk factors for stroke in adult men  
*C S Möller, J Häggström, B Zethelius, B Wiberg, J Sundström, L Lind*
- Research reports**  
 713 Decline and loss of birth seasonality in Spain: analysis of 33 421 731 births over 60 years  
*R Cancho-Candela, J M Andrés-de Llano, J Ardura-Fernández*  
 719 Outdoor air pollution and infant mortality: analysis of daily time-series data in 10 English cities  
*S Hajat, B Armstrong, P Wilkinson, A Busby, H Dolk*  
 723 Socioeconomic disadvantage in childhood and across the life course and all-cause mortality and physical function in adulthood: evidence from the Alameda County Study  
*G Turrell, J W Lynch, C Leite, T Raghunathan, G A Kaplan*  
 731 Does young adult suicide cluster geographically in Scotland?  
*D J Exeter, P J Boyle*

Contents continued on inside back cover



journal of  
**Epidemiology**  
**& Community Health**

Vol 61 No 8

Contents continued from outside back cover

- 737** A prospective study of polymorphisms of DNA repair genes XRCC1, XPD23 and APE/ref-1 and risk of stroke in Linxian, China  
*S Mahabir, C C Abnet, Y-L Qiao, L D Ratnasinghe, S M Dawsey, Z-W Dong, P R Taylor, S D Mark*

**Theory and methods**

- 742** Building the backbone for organizational research in public health systems: development of measures of organizational capacity for chronic disease prevention  
*N Hanusaik, J L O'Loughlin, N Kishchuk, J Eyles, K Robinson, R Cameron*

**PostScript**

- 750** Letters  
**751** Book review  
**751** Corrections  
**752** **Hygieia**

www.jech.com