

In this issue

561 *C Alvarez-Dardet, J R Ashton*

Editorials

562 Public health in India and the developing world: beyond medicine and primary healthcare

K S Jacob

564 Invited commentary: persistent organic pollutants and childhood learning and behavioural disorders

S A Korrick, D C Bellinger

Aphorism of the month

584 *L Levin and JRA*

The JECH gallery

604 Changing public spaces for getting physical activity

J Green

Speaker's corner

612 Cut to the chase: quickly achieving high coverage male circumcision

D Griffith, B Bellows, M Potts

Public health past and present

566 Food panics in history: corned beef, typhoid and "risk society"

D F Smith

Continuing professional education

571 A politics of health glossary

C Bamba, D Fox, A Scott-Samuel

Evidence based public health policy and practice

575 Portrayal of health-related behaviours in popular UK television soap operas

T Verma, J Adams, M White

578 Administration of hepatitis B vaccine in winter as a significant predictor of the poor effectiveness of vaccination in rural Mongolia: evidence from a nationwide survey

D Davaalkham, T Ojima, S Wiersma, T Lkhagvasuren, P Nymadawa, R Uehara, M Watanabe, I Oki, Y Nakamura

585 What determines public support of obesity prevention?

A Hilbert, W Rief, E Braehler

Research reports

591 Association of serum concentrations of persistent organic pollutants with the prevalence of learning disability and attention deficit disorder

D-H Lee, D R Jacobs, M Porta

597 The effects of ill health on entering and maintaining paid employment: evidence in European countries

M Schuring, L Burdorf, A Kunst, J Mackenbach

605 Socioeconomic status, status inconsistency and risk of ischaemic heart disease: a prospective study among members of a statutory health insurance company

R Peter, H Gässler, S Geyer

613 Effects of community-care networks on psychiatric emergency contacts, hospitalization and involuntary admission

A I Wierdsma, H D Poodt, C L Mulder

619 Suicide among male veterans: a prospective population-based study

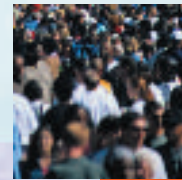
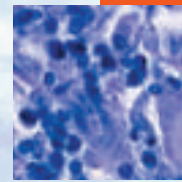
M S Kaplan, N Huguet, B H McFarland, J T Newsom

625 Prevalence and concordance of interpersonal violence reports from intimate partners: findings from the Pacific Islands Families Study

P J Schluter, J Paterson, M Feehan

631 Is low folate a risk factor for depression? A meta-analysis and exploration of heterogeneity

S Gilbody, T Lightfoot, T Sheldon




Contents continued on inside back cover

journal of
Epidemiology
& **Community Health**

Vol 61 No 7

Contents continued from outside back cover

- 638** Helicobacter pylori colonisation and eczema
O Herbarth, M Bauer, G J Fritz, P Herbarth, U Rolle-Kampczyk, P Krumbiegel, M Richter, T Richter
- 641** Food and nutrient intakes and K-ras mutations in exocrine pancreatic cancer
 *E Morales, M Porta, J Vioque, T López, M A Mendez, J Pumarega, N Malats, M Crous-Bou, J Ngo, J Rifà, A Carrato, L Guarner, J M Corominas, F X Real, for the PANKRAS II Study Group*
- Theory and methods**
- 650** Uncertainty analysis: an example of its application for estimating a survey proportion
A M Jurek, G Maldonado, S Greenland, T R Church
- PostScript**
- 655** Letter
- 655** Correction
- 656** **Hygieia**



This paper is freely available online under the BMJ Journals unlocked scheme, see <http://jech.com/info/unlocked.dtl>

www.jech.com