
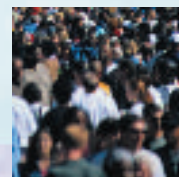
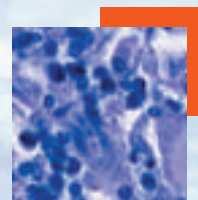


- In this issue**
465 *C Alvarez-Dardet, J R Ashton*
- Editorial**
466 Social inequalities in health among the elderly: a challenge for public health research
L Artazcoz, S Rueda
- Speaker's corner**
467 The predictability of research in chronic illness
P Davies
- The JECH gallery**
490 Children's exposure to tobacco
M Velasco-Garrido
- Aphorism of the month**
498 A fish is the last one to see the water
L Levin and JRA
- Public health past and present**
468  Local leadership in public health: the role of the medical officer of health in Britain, 1872–1974
M Gorsky
- Continuing professional education**
473 A typology of actions to tackle social inequalities in health
M Whitehead
- Evidence based public health policy and practice**
479 Childhood adversities as a predictor of disability retirement
K Harkonmäki, K Korkeila, J Vahtera, M Kivimäki, S Suominen, L Sillanmäki, M Koskenvuo
485 School culture as an influencing factor on youth substance use
S Bisset, W A Markham, P Aveyard
491 Socioeconomic and food-related physical characteristics of the neighbourhood environment are associated with body mass index
M C Wang, S Kim, A A Gonzalez, K E MacLeod, M A Winkleby
499 Change in the total and independent effects of education and occupational social class on mortality: analyses of all Finnish men and women in the period 1971–2000
P Martikainen, J Blomgren, T Valkonen
506 Symptomatology attributable to psychological exposure to a chemical incident: a natural experiment
J Gallacher, K Bronstera, S Palmer, D Fone, R Lyons
513 Unfairness and health: evidence from the Whitehall II Study
R De Vogli, J E Ferrie, T Chandola, M Kivimäki, M G Marmot
519 Evaluation of the quality of cause of death statistics in rural China using verbal autopsies
L Wang, G Yang, J Ma, C Rao, X Wan, G Dubrovsky, A D Lopez
- Research reports**
527 Neighbourhood environment and the incidence of depressive symptoms among middle-aged African Americans
M Schootman, E M Andresen, F D Wolinsky, T K Malmstrom, J P Miller, D K Miller
533 The long shadow of work—does time since labour market exit affect the association between socioeconomic position and health in a post-working population
M Hyde, Ian R Jones
540 Long-term impact of celebrity suicide on suicidal ideation: results from a population-based study
K-w Fu, P S F Yip
547 Dying of cancer in Italy: impact on family and caregiver. The Italian Survey of Dying of Cancer
P G Rossi, M Beccaro, G Miccinesi, P Borgia, M Costantini, F Chini, D Baiocchi, G De Giacomi, M Grimaldi, M Montella, the ISDOC Working Group

Contents continued on inside back cover



journal of **Epidemiology**
& Community Health

Vol 61 No 6

Contents continued from outside back cover

- 555** **Theory and methods**
A framework for the delivery of public health: an ecological approach
J Nurse, P Edmondson-Jones
- 559** **PostScript**
Book reviews
- 559** Corrections
- 560** **Hygieia**



This paper is freely available online
under the BMJ Journals unlocked
scheme, see [http://jech.com/info/
unlocked.dtl](http://jech.com/info/unlocked.dtl)

www.jech.com