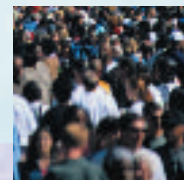
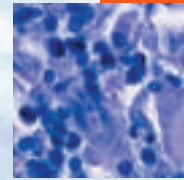


- In this issue**
 369 *C Alvarez-Dardet, J R Ashton*
- Editorial**
 370 The myopia of governments contributes to maternal mortality: dying from socioeconomic and physical distances
M T R Cantero, M Carrasco-Portiño, E E Fiallos, C D Sánchez, C de Sierra
- The JECH gallery**
 371 Game, set and match
T Trayers
- Aphorism of the month**
 373 Public health is an art, but it should also be a science
L Levin and JRA
- Speaker's corner**
 388 Don Quixotech in New Laputa
L D Castiel, P R Vasconcellos-Silva
- Research agenda**
 372 Endocrine disruption
N Olea, M Fernández
- Public health past and present**
 374 From poor law society to the welfare state: school meals in Norway 1890s–1950s
A Andresen, K T Elvbakken
- Continuing professional education**
 378 Cognitive epidemiology
I J Deary, G D Batty
- Evidence based public health policy and practice**
 385 Mumps and the media: changes in the reporting of mumps in response to newspaper coverage
B Olowokure, L Clark, A J Elliot, D Harding, A Fleming
 389 Mutual interaction between nutritional status and chronic arsenic toxicity due to groundwater contamination in an area of Terai, lowland Nepal
M Maharjan, C Watanabe, S A Ahmad, M Umezaki, R Ohtsuka
 395 Air pollution from biomass burning and asthma hospital admissions in a sugar cane plantation area in Brazil
M A Arbex, L C Martins, R C de Oliveira, L A A Pereira, F F Arbex, J E D Cançado, P H N Saldiva, A L F Braga
 401 Educational differences in mobility: the contribution of physical workload, obesity, smoking and chronic conditions
P Sainio, T Martelin, S Koskinen, M Heliövaara
 409 Perceived discrimination, socioeconomic disadvantage and refraining from seeking medical treatment in Sweden
S Wamala, J Merlo, G Boström, C Hogstedt
 416 Patient cost sharing and physician visits by socioeconomic position: findings in three Western European countries
L Lostao, E Regidor, S Geyer, P Aiach
 421 What are the effects of anti-discriminatory legislation on socioeconomic inequalities in the employment consequences of ill health and disability?
C Bambra, D Pope
 427 Organisational justice and smoking: the Finnish public sector study
A Kouvonon, J Vahtera, M Elovainio, S J Cox, T Cox, A Linna, M Virtanen, M Kivimäki
- Research reports**
 434 Reproducibility measures and their effect on diet–cancer associations in the Boyd Orr cohort
C Frobisher, K Tilling, P M Emmett, M Maynard, A R Ness, G D Smith, S J Frankel, D J Gunnell

Contents continued on inside back cover



journal of
Epidemiology
& **Community Health**

Vol 61 No 5

Contents continued from outside back cover

- 441 Alcohol intake and cardiovascular disease and mortality: the role of pre-existing disease
I H M Friesema, P J Zwietering, M Y Veenstra, J A Knottnerus, H F L Garretsen, P H H M Lemmens
- 447 Changes in income in the years before death: a record linkage study in Stockholm County
B Hanratty, B Burström, A Walander, M Whitehead
- 449 Non-participation and mortality in different socioeconomic groups: the FINRISK population surveys in 1972–92
K Harald, V Salomaa, P Jousilahti, S Koskinen, E Vartiainen
- 455 Effect of conjugal bereavement on mortality of the bereaved spouse in participants of the Renfrew/Paisley Study
C L Hart, D J Hole, D A Lawlor, G D Smith, T F Lever
- Theory and methods**
- 461 Avoiding bias from aggregate measures of exposure
S W Duffy, H Jonsson, O F Agbaje, N Pashayan, R Gabe
- 464 **Hygiene**

www.jech.com