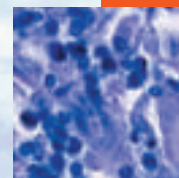


- In this issue**
 273 *C Alvarez-Dardet, J R Ashton*
- Editorial**
 274 When wars overwhelm welfare
N R Milio
- Research agenda**
 276 Precarious employment and health: developing a research agenda
J Benach, C Muntaner
- Public health past and present**
 278 Illicit drugs and the rise of epidemiology during the 1960s
A Mold
- Aphorism of the month**
 281 In public health, let the dough rise slowly (but not too slowly)
L Levin and JRA
- The JECH gallery**
 297 Protest and resentment
F G De Maio
- Speaker's corner**
 366 Pharmaceutical advertising: from prospectus to marketing
B Cambroner-Saiz
- Continuing professional education**
 282 Public health preparedness: a systems-level approach
S Moore, A Mawji, A Shiell, T Noseworthy
- Evidence based public health policy and practice**
 287 Avoidable mortality by neighbourhood income in Canada 25 years after the establishment of universal health insurance
P D James, R Wilkins, A S Detsky, P Tugwell, D G Manuel
 298 Antismoking television advertising and socioeconomic variations in calls to Quitline
M Siahpush, M Wakefield, M Spittal, S Durkin
 302 Tuberculosis treatment outcome monitoring in England, Wales and Northern Ireland for cases reported in 2001
D Antoine, C E French, J Jones, J M Watson
 308 Offering a prognosis in lung cancer: when is a team of experts an expert team?
F Kee, T Owen, R Leatham
- Research reports**
 314 Seasonal variation of effect of air pollution on blood pressure
J-H Choi, Q-S Xu, S-Y Park, J-H Kim, S-S Hwang, K-H Lee, H-J Lee, Y-C Hong
 319 Men's childhood sexual abuse histories by one-parent versus two-parent status of childhood home
W C Holmes
 326 Neighbourhood socioeconomic status, health and working conditions of school teachers
M Virtanen, M Kivimäki, M Elovainio, A Linna, J Pentti, J Vahtera
 331 Is cumulative exposure to economic hardships more hazardous to women's health than men's? A 16-year follow-up study of the Swedish Survey of Living Conditions
J Ahnquist, P Fredlund, S P Wamala
 337 Is economic adversity always a killer? Disadvantaged areas with relatively low mortality rates
H Tunstall, R Mitchell, J Gibbs, S Platt, D Dorling
 344 The burden of physical activity-related ill health in the UK
S Allender, C Foster, P Scarborough, M Rayner
 349 Assessment of the magnitude of geographical variations and socioeconomic contextual effects on ischaemic heart disease mortality: a multilevel survival analysis of a large Swedish cohort
B Chaix, M Rosvall, J Merlo



Contents continued on inside back cover

journal of
Epidemiology
& Community Health

Vol 61 No 4

Contents continued from outside back cover

- 356** Life events and the risk of low back and neck/shoulder pain of the kind people are seeking care for: results from the MUSIC-Norrköping case-control study
E Skillgate, E Vingård, M Josephson, T Theorell, L Alfredsson
- Theory and methods**
- 362** Validity of predictions in health impact assessment
J L Veerman, J P Mackenbach, J J Barendregt
- PostScript**
- 367** Book reviews
- 368** **Hygieia**

www.jech.com