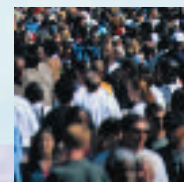
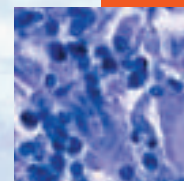


- In this issue**
- 929 *C Alvarez-Dardet, J R Ashton*
- Editorial**
- 930 Can health campaigns make people ill? The iatrogenic potential of population-based cannabis prevention
H R Sumnall, M A Bellis
- Speakers' corner**
- 931 When do we know enough to recommend action?
P Braveman
- The JECH Gallery**
- 932 Food availability, personal constraints and community resources
C Cubbin, M A Winkleby
- 932 Aphorism of the month
JRA, L Levin
- Continuing professional education**
- 933 A simple guide to chaos and complexity
D Rickles, P Hawe, A Shiell
- 938 Antonovsky's sense of coherence scale and its relation with quality of life: a systematic review
M Eriksson, B Lindström
- 945 The psychosocial and health effects of workplace reorganisation. I. A systematic review of organisational-level interventions that aim to increase employee control
M Egan, C Bamba, S Thomas, M Petticrew, M Whitehead, H Thomson
- Public health past and present**
- 955 Reinventing public health: A New Perspective on the Health of Canadians and its international impact
H MacDougall
- Evidence-based public health policy and practice**
- 960 Rapid health impact appraisal of eviction versus a housing project in a colony-dwelling Roma community
K Kósa, Á Molnár, M McKee, R Ádány
- 966 Social problems, primary care and pathways to help and support: addressing health inequalities at the individual level. Part I: the GP perspective
J Popay, U Kowarzik, S Mallinson, S Mackian, J Barker
- 972 Social problems, primary care and pathways to help and support: addressing health inequalities at the individual level. Part II: lay perspectives
J Popay, U Kowarzik, S Mallinson, S Mackian, J Barker
- 978 The association of sidewalk walkability and physical disorder with area-level race and poverty
C M Kelly, M Schootman, E A Baker, E K Barnidge, A Lemes
- 984  Can I risk using public services? Perceived consequences of seeking help and health care among households living in poverty: qualitative study
K Canvin, C Jones, A Marttila, B Burström, M Whitehead
- 990 Societal characteristics and health in the former communist countries of Central and Eastern Europe and the former Soviet Union: a multilevel analysis
M Bobak, M Murphy, R Rose, M Marmot
- Research reports**
- 997 Mental ability across childhood in relation to risk factors for premature mortality in adult life: the 1970 British Cohort Study
G D Batty, I J Deary, I Schoon, C R Gale
- 1004 Childhood and adulthood socioeconomic position across 20 causes of death: a prospective cohort study of 800 000 Norwegian men and women
Ø Næss, B H Strand, G D Smith
- Theory and methods**
- 1010 Case-mix adjustment in non-randomised observational evaluations: the constant risk fallacy
J Nicholl
- PostScript**
- 1014 Book reviews
- 1015 Correction
- 1016 **Hygieia**



This paper is freely available online under the BMJ Journals unlocked scheme, see <http://jech.com/info/unlocked.dtl>