

**In this issue**

- 457 The gendered effects on health of living arrangements, neighbourhood environment, and marital status  
*J R Ashton, C Alvarez-Dardet*

**Continuing professional education**

- 458 Community health advocacy  
*S Loue*

**The JECH gallery**

- 463 Evidence based intervention or diversion?  
*J R Ashton*

- 501 Leading by example  
*J R Ashton*

**Aphorism of the month**

- 512 "Everybody's greedy except you and me (and even you seem greedy sometimes)."  
*L Levin*

**Speaker's corner**

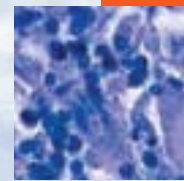
- 521 People's power in people's hands: the lesson we need to learn  
*B Sibal*

**Editorials**

- 464 The legionnaires' outbreak in Barrow-in-Furness, summer 2002  
*D Telford, S Partridge, I Cumming, A Smith, N Calvert*
- 466 Community acquired legionnaires' disease: lessons for surveillance from recent outbreaks  
*M Regan, B Olowokure*

**Research reports**

- 468 Living arrangements and mental health in Finland  
*K Joutsenniemi, T Martelin, P Martikainen, S Pirkola, S Koskinen*
- 476 Do perceptions of neighbourhood environment influence health? Baseline findings from a British survey of aging  
*A Bowling, J Barber, R Morris, S Ebrahim*
- 484 Life course social roles and women's health in mid-life: causation or selection?  
*A McMunn, M Bartley, R Hardy, D Kuh*
- 490 Does gender modify associations between self rated health and the social and economic characteristics of local environments?  
*A M Kavanagh, R Bentley, G Turrell, D H Broom, S V Subramanian*
- 496 Influence of marital history over two and three generations on early death. A longitudinal study of Danish men born in 1953  
*R Lund, U Christensen, B E Holstein, P Due, M Osler*
- 502 Influence of family type and parenting behaviours on teenage sexual behaviour and conceptions  
*C Bonell, E Allen, V Strange, A Oakley, A Copas, A Johnson, J Stephenson*
- 507 Traffic intensity, dwelling value, and hospital admissions for respiratory disease among the elderly in Montreal (Canada): a case-control analysis  
*A Smargiassi, K Berrada, I Fortier, T Kosatsky*
- 513 Income inequality and physical and mental health: testing associations consistent with proposed causal pathways  
*F J Zimmerman, J F Bell*
- 522 Impact of a cultural belief about ghost month on delivery mode in Taiwan  
*H-C Lin, S Xirasagar, Y-C Tung*
- 527 Childhood socioeconomic circumstances predict specific causes of death in adulthood: the Glasgow student cohort study  
*B Galobardes, G Davey Smith, M Jeffreys, P McCarron*



Contents continued on inside back cover

journal of  
**Epidemiology**  
**& Community Health**

Vol 60 No 6

Contents continued from outside back cover

- Evidence based policy and practice**
- 530** Can Health Promoting Schools contribute to the better health and wellbeing of young people?  
The Hong Kong experience  
*A Lee, F F K Cheng, Y Fung, L St Leger*
- 537** Injecting and HIV prevalence among young heroin users in three Spanish cities and their association with the delayed implementation of harm reduction programmes  
*L de la Fuente, M J Bravo, C Toro, M T Brugal, G Barrio, V Soriano, F Vallejo, R Ballesta and Project Itinere Group*
- 543** Review of syndromic surveillance: implications for waterborne disease detection  
*M Berger, R Shiau, J M Weintraub*
- Letter**
- 551** On socioeconomic gradients in cancer registry data quality  
*F P Boscoe, C Sherman*
- 552** **Hygieia**