

In this issue

- 1005** *Per aspera ad astra*; fifty years after *silent spring*, organic pollutants rear their heads with diabetes
C Alvarez-Dardet, J R Ashton

Editorial

- 1006** Could low-level background exposure to persistent organic pollutants contribute to the social burden of type 2 diabetes?
D-H Lee, D R Jacobs Jr, M Porta

Aphorism of the month

- 1008** "Establish your own priorities" (because you wouldn't want anyone to establish them for you, would you?)
L Levin, J R Ashton

Speaker's corner

- 1009** The United Nations and road safety: what is the connection?
E Krug, T Toroyan

The JECH gallery

- 1019** Fiorella Belpoggi, MD: *per aspera ad astra*
D F Salerno

Continuing professional education

- 1010** A glossary for the social epidemiology of work organisation: part 2 Terms from the sociology of work and organisations
C Muntaner, J Benach, W C Hadden, D Gimeno, F G Benavides

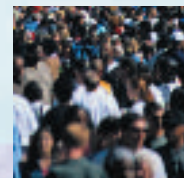
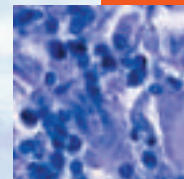
Evidence based public health policy and practice

- 1013** The irony of a rich country: issues of financial access to and availability of healthy food in the Republic of Ireland
S Friel, O Walsh, D McCarthy
- 1020** Women's health in a rural community in Kerala, India: do caste and socioeconomic position matter?
K S Mohindra, S Haddad, D Narayana
- 1027** Inequity in access to dental care services explains current socioeconomic disparities in oral health: The Swedish National Surveys of Public Health 2004–2005
S Wamala, J Merlo, G Boström
- 1034** Cross-cultural adaptation of a tobacco questionnaire for Punjabi, Cantonese, Urdu and Sylheti speakers: qualitative research for better clinical practice, cessation services and research
L Hanna, S Hunt, R S Bhopal
- 1040** The geography of despair among 15–44-year-old men in England and Wales: putting suicide on the map
N Middleton, J A C Sterne, D Gunnell
- 1048** Alcohol misuse in older people: heavy consumption and protean presentations
M M Mehta, K J Moriarty, D Proctor, M Bird, W Darling

Research reports

- 1053** Area deprivation, individual factors and low birth weight in England: is there evidence of an "area effect"?
C Dibben, M Sigala, A Macfarlane
- 1060** Neighbourhood mortality inequalities in New York City, 1989–1991 and 1999–2001
A M Karpati, M T Bassett, C McCord
- 1065** Provincial income inequality and self-reported health status in China during 1991–7
X Pei, E Rodriguez
- 1070** Gender differences in work–home interplay and symptom perception among Swedish white-collar employees
L Bertsson, U Lundberg, G Krantz
- 1077** The contribution of smoking to socioeconomic differentials in mortality: results from the Melbourne Collaborative Cohort Study, Australia
M Siahpush, D English, J Powles

Contents continued on inside back cover



journal of **Epidemiology**
& Community Health

Vol 60 No 12

Contents continued from outside back cover

- 1080** Accumulation of adverse socioeconomic position over the entire life course and the risk of myocardial infarction among men and women: results from the Stockholm Heart Epidemiology Program (SHEEP)
R Ljung, J Hallqvist
- 1085** Influence of socioeconomic status on clinical outcomes and quality of life after percutaneous coronary intervention
M A Denvir, A J Lee, J Rysdale, A Walker, H Eteiba, I R Starkey, J P Pell
- 1089** Measuring inequalities in health: the case for healthy life expectancy
R Wood, M Sutton, D Clark, A McKeon, M Bain
- Theory and methods**
- 1093** Linkage of survey data with district-level lung cancer registrations: a method of bias reduction in ecological studies
G A Lancaster, M Green, S Lane
- PostScript**
- 1099** Letters
- 1100** **Hygieia**