

In this issue

- 909** Social puberty, gadgets, and the dynamics of public health
C Alvarez-Dardet, J R Ashton

Editorials

- 910** Adults at 12? Trends in puberty and their public health consequences
M A Bellis, J Downing, J R Ashton
- 911** European Medicines Agency policies for clinical trials leave women unprotected
M T Ruiz Cantero, M Angeles Pardo

Aphorism of the month

- 913** "The conspiracy of silence in health care quality"
L Levin, J Ashcroft

Speaker's corner

- 922** Health and social consequences in the quest for comfort, convenience and pleasure

The JECH gallery

- 944** Fernanda Giannasi: battling asbestos in Brazil
D F Salerno

Continuing professional education

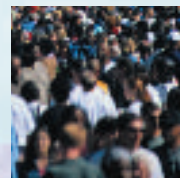
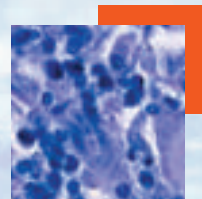
- 914** A glossary for the social epidemiology of work organisation: Part 1, social psychology
C Muntaner, J Benach, W C Hadden, D Gimeno, F G Benavides

Evidence based public health policy and practice

- 917** Deprivation and quality of primary care services: evidence for persistence of the inverse care law from the UK Quality and Outcomes Framework
G McLean, M Sutton, B Guthrie
- 923** Examining the effect of residential change on intimate partner violence risk
E Waltermaurer, L-A McNutt, M J Mattingly

Research reports

- 928** Global health inequalities: an international comparison
J P Ruger, H-J Kim
- 937** Lifelong socioeconomic trajectory and premature mortality (35–65 years) in France: findings from the GAZEL Cohort Study
M Melchior, L F Berkman, I Kawachi, N Krieger, M Zins, S Bonenfant, M Goldberg
- 945** Patterns of mortality and their changes in France (1968–99): insights into the structure of diseases leading to death and epidemiological transition in an industrialised country
J Coste, E Bernardin, E Jougl
- 956** Ecological association between suicide rates and indices of deprivation in the north west region of England: the importance of the size of the administrative unit
M Rezaeian, G Dunn, S St Leger, L Appleby
- 962** Attempted suicide, psychological health and exposure to harassment among Japanese homosexual, bisexual or other men questioning their sexual orientation recruited via the internet
Y Hidaka, D Operario
- 968** Does parity affect mortality among parous women?
H Koski-Rahikkala, A Pouta, K Pietiläinen, A-L Hartikainen
- 974** The psychosocial versus material hypothesis to explain observed inequality in disability among older adults: data from the West of Scotland Twenty-07 Study
J A Adamson, S Ebrahim, K Hunt



Contents continued on inside back cover

journal of **Epidemiology**
& Community Health

Vol 60 No 11

Contents continued from outside back cover

- 981** **Theory and methods**
A life-course approach to measuring socioeconomic position in population health surveillance systems
C R Chittleborough, F E Baum, A W Taylor, J E Hiller
- 993** Validity of age at menarche self-reported in adulthood
R Cooper, M Blell, R Hardy, S Black, T M Pollard, M E J Wadsworth, M S Pearce, D Kuh
- 998** Ethics and governance of global health inequalities
J P Ruger
- 1004** **Hygieia**

www.jech.com