

In this issue

- 713 An interdisciplinary analysis of the hormone replacement therapy saga
J R Ashton, C Alvarez-Dardet

Editorials

- 714 Who cares about health for all in the 21st century?
F Baum
- 716 A journal for evidence based policies
A M Garcia, C Alvarez-Dardet
- 717 Geographically based approaches can identify environmental causes of disease
M Kogevinas, N Pearce
- 718 Job insecurity and its effect on health
M Bartley
- 719 Flexible employment and health inequalities
F G Benavides, G L Delclos

The JECH gallery

- 720 Trojan mice in global health issues
C A Brown
- 767 Just one look
D F Salerno

Speaker's corner

- 736 Binge drinker
P J Aspinall

Evidence based public health policy and practice

- 721 Incidence of shoulder and neck pain in a working population: effect modification between mechanical and psychosocial exposures at work? Results from a one year follow up of the Malmö shoulder and neck study cohort
P-O Östergren, B S Hanson, I Balogh, J Ektor-Andersen, A Isacson, P Örbaek, J Winkel, S-O Isacson, for the Malmö Shoulder Neck Study Group

Continuing professional education

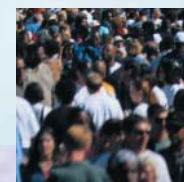
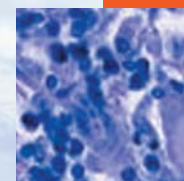
- 729 A brief conceptual tutorial on multilevel analysis in social epidemiology: investigating contextual phenomena in different groups of people
J Merlo, M Yang, B Chaix, J Lynch, L Råstam
- 737 International cooperation and health. Part 2: making a difference
M McKee, A B Gilmore, N Schwalbe

Reviews

- 740 Hormone replacement therapy, cancer, controversies, and women's health: historical, epidemiological, biological, clinical, and advocacy perspectives
N Krieger, I Löwy, R Aronowitz, J Bigby, K Dickersin, E Garner, J-P Gaudillière, C Hinestroza, R Hubbard, P A Johnson, S A Missmer, J Norsigian, C Pearson, C E Rosenberg, L Rosenberg, B G Rosenkrantz, B Seaman, C Sonnenschein, A M Soto, J Thornton, G Weisz
- 749 Measuring paternal discrepancy and its public health consequences
M A Bellis, K Hughes, S Hughes, J R Ashton

Research reports

- 755 Oil combustion and childhood cancers
E G Knox
- 761 Social inequalities in the impact of flexible employment on different domains of psychosocial health
L Artazcoz, J Benach, C Borrell, I Cortès
- 768 Income distribution, public services expenditures, and all cause mortality in US states
J R Dunn, B Burgess, N A Ross
- 775 Relation between trends in late middle age mortality and trends in old age mortality—is there evidence for mortality selection?
F Janssen, A Peeters, J P Mackenbach, A E Kunst, for NEDCOM



Contents continued on inside back cover

journal of
Epidemiology
& **Community Health**

Vol 59 No 9

Contents continued from outside back cover

- 782** Mortality from heart failure in an English population, 1979–2003: study of death certification
M J Goldacre, D Mant, M Duncan, M Griffith
- 785** Adverse socioeconomic position across the lifecourse increases coronary heart disease risk cumulatively: findings from the British women's heart and health study
D A Lawlor, S Ebrahim, G Davey Smith
- 794** Is perceived nervousness and anxiety a predictor of premature mortality and severe morbidity? A longitudinal follow up of the Swedish survey of living conditions
G Ringbäck Weitoft, M Rosén
- 799** Socioeconomic gradients in the prevalence of cardiovascular disease in Scotland: the roles of composition and context
A H Leyland
- Theory and methods**
- 804** Systematic reviews of health effects of social interventions: I. Finding the evidence: how far should you go?
D Ogilvie, V Hamilton, M Egan, M Petticrew
- Letters**
- 809** Acute otitis media after forceps delivery
S Verd
- 809** Education and mortality: a role for intelligence?
G D Batty, I J Deary, F V A van Oort, F J van Lenthe, J P Mackenbach
- 810** Offspring sex ratios of people exposed to electromagnetic fields
W H James, M Saadat
- Book reviews**
- 811** Public health policy
S Goldie
- 811** Ethics for health care, 2nd edition
S Margolis
- 812** **Hygieia**