

In this issue

- 613 Happiness, inequalities, and health
C Alvarez-Dardet, J R Ashton

Editorials

- 614 Health, happiness, and higher levels of social organisation
N Ross
- 615 Nutritional transition: a determinant of global health
S J Genus
- 617 Mathematical modelling of health impacts
J Mindell, M Joffe

Speaker's corner

- 618 The misuse of euphemisms in public health: the case of "food insecurity"
L D Castiel

The JECH gallery

- 637 Flowering almond tree in February
E P Gómez

Aphorism of the month

- 644 There is no defence against kindness (Samuel Levin)
J R Ashton

Continuing professional education

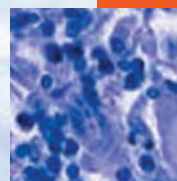
- 619 Social capital and mental illness: a systematic review
M J De Silva, K McKenzie, T Harpham, S R A Huttly
- 628 International cooperation and health. Part I: issues and concepts
M McKee, A B Gilmore, N Schwalbe

Evidence based public health policy and practice

- 632 Can scientists and policy makers work together?
B C K Choi, T Pang, V Lin, P Puska, G Sherman, M Goddard, M J Ackland, P Sainsbury, S Stachenko, H Morrison, C Clotey
- 638 Do social and economic reforms change socioeconomic inequalities in child mortality? A case study: New Zealand 1981–1999
C Shaw, T Blakely, J Atkinson, P Crampton
- 645 Projected health impact of the Los Angeles City living wage ordinance
B L Cole, R Shimkhada, H Morgenstern, G Kominski, J E Fielding, S Wu
- 651 Substantial use of primary health care by prisoners: epidemiological description and possible explanations
J M Feron, D Paulus, R Tonglet, V Lorant, D Pestiaux

Research reports

- 656 Early life predictors of childhood intelligence: evidence from the Aberdeen children of the 1950s study
D A Lawlor, G D Batty, S M B Morton, I J Deary, S Macintyre, G Ronalds, D A Leon
- 664 Covariation in the socioeconomic determinants of self rated health and happiness: a multivariate multilevel analysis of individuals and communities in the USA
S V Subramanian, D Kim, I Kawachi
- 670 Wider income gaps, wider waistbands? An ecological study of obesity and income inequality
K E Pickett, S Kelly, E Brunner, T Lobstein, R G Wilkinson
- 675 Low socioeconomic status of the opposite sex is a risk factor for middle aged mortality
M S Kopp, Á Skrabski, I Kawachi, N E Adler
- 679 Framing pub smoking bans: an analysis of Australian print news media coverage, March 1996–March 2003
D Champion, S Chapman
- 685 Increased resting heart rate with pollutants in a population based study
J-B Ruidavets, S Cassadou, M Cournot, V Bataille, M Meybeck, J Ferrières



Contents continued on inside back cover

journal of
Epidemiology
& Community Health

Vol 59 No 8

Contents continued from outside back cover

- 694** Organisational downsizing and work stress: testing synergistic health effects in employed men and women
N Dragano, P E Verde, J Siegrist
- Theory and methods**
- 700** A framework for measuring health inequity
Y Asada
- 706** Applied analysis of recurrent events: a practical overview
J W R Twisk, N Smidt, W de Vente
- Letter**
- 711** Association between heavy computer users and glaucomatous visual field abnormalities
K-S Leung
- Book reviews**
- 711** Health inequality: an introduction to concepts, theories and methods
C Lester
- 711** MONICA monograph and multimedia sourcebook
C Lawes
- 712** **Hygieia**