

In this issue

- 341 Common sense, the least common sense?
C Alvarez-Dardet, J R Ashton

Editorials

- 342 Just one question: If one question works, why ask several?
A Bowling
- 345 Efficacy, effectiveness, and the evaluation of public health interventions
M L Barreto
- 347 Suicide risk after spousal suicide of psychiatric admission: effects of assertive mating on heritable traits compared with environmental explanations
M Voracek

Poem

- 349 The GREENHOUSE EFFECT in EFFECT
L Tafari

Continuing professional education

- 350 Embodiment: a conceptual glossary for epidemiology
N Krieger

The JECH gallery

- 355 Afghanistan is back in the international public health community
V Ridde
- 394 Relationships, context, and embedded systems: illustrating complexity science
C A Brown

Aphorism of the month

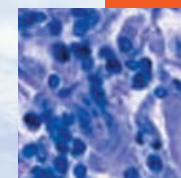
- 370 Beware of healthism
J R Ashton, L Levin

Evidence based public health policy and practice

- 356 Health impact assessment: assessing opportunities and barriers to intersectoral health improvement in an expanded European Union
K Lock, M McKee
- 361 Quantitative health impact assessment: current practice and future directions
J L Veerman, J J Barendregt, J P Mackenbach
- 371 Impact of voluntary folate fortification on plasma homocysteine and serum folate in Australia from 1995 to 2001: a population based cohort study
S Hickling, J Hung, M Knuiman, K Jamrozik, B McQuillan, J Beilby, P Thompson
- 377 Work related and non-work related stress in relation to low leisure time physical activity in a Swedish population
K M Wemme, M Rosvall
- 380 Physical activity and health related quality of life among people with arthritis
J E Abell, J M Hootman, M M Zack, D Moriarty, C G Helmick
- 386 Late referral for assessment of renal failure
F Kee, E A Reaney, A P Maxwell, D G Fogarty, G Savage, C C Patterson, on behalf of the Northern Ireland TSN Renal Group

Research reports

- 389 Relatively poor, absolutely ill? A study of regional income inequality in Russia and its possible health consequences
P Carlson
- 395 Trends in smoking behaviour between 1985 and 2000 in nine European countries by education
K Giskes, A E Kunst, J Benach, C Borrell, G Costa, E Dahl, J A A Dalstra, B Federico, U Helmert, K Judge, E Lahelma, K Moussa, P O Ostergren, S Platt, R Prattala, N K Rasmussen, J P Mackenbach



Contents continued on inside back cover

journal of
Epidemiology
& **Community Health**

Vol 59 No 5

Contents continued from outside back cover

- 402 Breast cancer survival in South Asian women in England and Wales
S Farooq, M P Coleman
- 407 Midlife suicide risk, partner's psychiatric illness, spouse and child bereavement by suicide or other modes of death: a gender specific study
E Agerbo
- 413 Physical functioning in elderly Europeans: 10 year changes in the north and south: the HALE project
S Äijänseppä, I-L Notkola, M Tjhuis, W van Staveren, D Kromhout, A Nissinen
- Theory and methods**
- 420 Performance profile of an outcome measure: morbidity assessment index for newborns
A Verma, A Weir, J Drummond, B F Mitchell
- 427 Are international differences in the outcomes of acute coronary syndromes apparent or real? A multilevel analysis
W-C Chang, W K Midodzi, C M Westerhout, E Boersma, J Cooper, E S Barnathan, M L Simoons, L Wallentin, E M Ohman, P W Armstrong for the GUSTO-IV ACS Investigators
- Letters**
- 434 Failure to identify association between deprivation and incidence of lung cancer surprising
J Adams, J Battersby, J Flowers, I Harvey
- 434 Bidirectional associations between depression/anxiety and bowel disease in a population based cohort
C Leue, J van Os, J Neeleman, R de Graaf, W Vollebergh, R W Stockbrügger
- Book review**
- 435 Cannabis use and dependence: public health and public policy
P Peretti-Watel
- 436 **Hygieia**