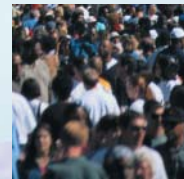
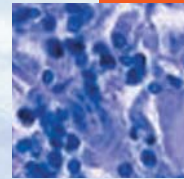


- 89 In this issue**  
 News scoop—hold the front page: “poverty damages health”  
*C Alvarez-Dardet, J R Ashton*
- 90 Editorial**  
 Assessing the impact of mobility on health: implications for life course epidemiology  
*A H Leyland*
- The JECH gallery**
- 91** “Low-Carb”: America’s latest food fad  
*M Shaw*
- 100** Oysters and enteric fever aetiology in 1900 England  
*A Morabia, A Hardy*
- Poem**
- 92** The liquid of life  
*L Tafari*
- Speaker’s corner**
- 93** Understanding the basic principles of knowledge translation  
*B C K Choi*
- Aphorism of the month**  
 “The half-life of a health fact is probably about four and half years” (Lowell Levin)  
*J R Ashton*
- Public health past and present**
- 94** The pioneering use of a questionnaire to investigate a food borne disease outbreak in early 20th century Britain  
*A Morabia, A Hardy*
- Evidence based public health policy and practice**
- 101** Childhood cancers and atmospheric carcinogens  
*E G Knox*
- Continuing professional education**
- 106** Social paediatrics  
*N Spencer, C Colomer, G Alperstein, P Bouvier, J Colomer, O Duperrex, G Gokcay, G Julien, L Kohler, B Lindström, A Macfarlane, R Mercer, T Panagiotopoulos, T Schulpen, on behalf of the European Society for Social Paediatrics*
- 109** Excess in cardiovascular events on Mondays: a meta-analysis and prospective study  
*A G Barnett, A J Dobson*
- Research reports**
- 115** Geographical variation in life expectancy at birth in England and Wales is largely explained by deprivation  
*L M Woods, B Rachet, M Riga, N Stone, A Shah, M P Coleman*
- 121** Breast feeding and cardiovascular disease risk factors, incidence, and mortality: the Caerphilly study  
*R M Martin, Y Ben-Shlomo, D Gunnell, P Elwood, J W G Yarnell, G Davey Smith*
- 130** Long term effect of breast feeding: cognitive function in the Caerphilly cohort  
*P C Elwood, J Pickering, J E J Gallacher, J Hughes, D Davies*
- 134** Overweight and obesity and weight change in middle aged men: impact on cardiovascular disease and diabetes  
*S G Wannamethee, A G Shaper, M Walker*
- 140** Psychological distress, physical illness, and risk of coronary heart disease  
*F Rasul, S A Stansfeld, C L Hart, G Davey Smith*
- 146** Is the rate of biological aging, as measured by age at diagnosis of cancer, socioeconomically patterned?  
*J Adams, M White, D Forman*



Contents continued on inside back cover

journal of  
**Epidemiology**  
**& Community Health**

Vol 59 No 2

Contents continued from outside back cover

- 152** Does material disadvantage explain the increased risk of adverse health, educational, and behavioural outcomes among children in lone parent households in Britain? A cross sectional study  
*N Spencer*
- 158** Has the relation between income inequality and life expectancy disappeared? Evidence from Italy and top industrialised countries  
*R De Vogli, R Mistry, R Gnesotto, G A Cornia*
- 163** Influence of material and behavioural factors on occupational class differences in health  
*M Laaksonen, E Roos, O Rahkonen, P Martikainen, E Lahelma*
- 170** Who you live with and where you live: setting the context for health using multiple membership multilevel models  
*T Chandola, P Clarke, R D Wiggins, M Bartley*
- 176** **Hygieia**