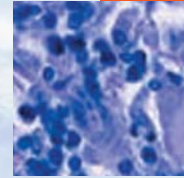


- In this issue**
- 813 Elephants in the living room and "ISMS" of all kinds—whimsical and reflective contributions from the board  
*C Alvarez-Dardet, J R Ashton*
- Editorial**
- 814 Ideology, science, and public policy  
*N Milio*
- Aphorism of the month**
- 815 "Every silver lining has a cloud (always look on the bright side of life)" (Lowell Levin)  
*J R Ashton*
- Speaker's corner**
- 816 Aging by one who is aging  
*L J Duhl*
- The JECH gallery**
- 885 An environmental face lift: the Dings Home-Zone project  
*T Trayers, D A Lawlor*
- Continuing professional education**
- 818 Violence against women  
*G Krantz, C Garcia-Moreno*
- Research reports**
- 822 Urban built environment and depression: a multilevel analysis  
*S Galea, J Ahern, S Rudenstine, Z Wallace, D Vlahov*
- 828 Changes in the circumstances of young mothers in Britain: 1990 to 2000  
*K Nanchahal, K Wellings, G Barrett, A J Copas, C H Mercer, S Macmanus, W Macdowall, K A Fenton, B Erens, A M Johnson*
- 834 Intimate partner violence among Canadian women with activity limitations  
*M M Cohen, T Forte, J Du Mont, I Hyman, S Romans*
- 840 Prevalence of wife beating in Jordanian refugee camps: reports by men and women  
*M Khawaja, R Barazi*
- 842 Maternal education, lone parenthood, material hardship, maternal smoking, and longstanding respiratory problems in childhood: testing a hierarchical conceptual framework  
*N Spencer*
- 847 Substance misuse and psychiatric illness: prospective observational study using the general practice research database  
*M Frisher, I Crome, J Macleod, D Millson, P Croft*
- 851 Employee worktime control moderates the effects of job strain and effort-reward imbalance on sickness absence: the 10-town study  
*L Ala-Mursula, J Vahtera, A Linna, J Pentti, M Kivimäki*
- 858 Are intrinsic motivational factors of work associated with functional incapacity similarly regardless of the country?  
*A Väänänen, K Pahkin, P Huuhtanen, M Kivimäki, J Vahtera, T Theorell, R Kalimo*
- 864 Assessment of publication bias in meta-analyses of cardiovascular diseases  
*S Palma, M Delgado-Rodriguez*
- 870 Social mobility over the lifecourse and self reported mental health at age 50: prospective cohort study  
*P A Tiffin, M S Pearce, L Parker*
- 873 Is patriarchy the source of men's higher mortality?  
*D Stanistreet, C Bamba, A Scott-Samuel*
- Theory and methods**
- 877 Population health. More than the sum of the parts?  
*D D Reidpath*
- 881 A bootstrap method to avoid the effect of concurvity in generalised additive models in time series studies of air pollution  
*A Figueiras, J Roca-Pardiñas, C Cadarso-Suárez*



Contents continued on inside back cover

journal of  
**Epidemiology**  
& **Community Health**

Vol 59 No 10

Contents continued from outside back cover

- 886** Systematic reviews of health effects of social interventions: 2. Best available evidence: how low should you go?  
*D Ogilvie, M Egan, V Hamilton, M Petticrew*
- 893** Thinking inside the bubble: evidence for a new contextual unit in urban mental health  
*R Whitley, M Prince, M Cargo*
- 898** Accuracy of adults' recall of childhood social class: findings from the Aberdeen children of the 1950s study  
*G D Batty, D A Lawlor, S Macintyre, H Clark, D A Leon*
- 904** Block observations of neighbourhood physical disorder are associated with neighbourhood crime, firearm injuries and deaths, and teen births  
*E Wei, A Hipwell, D Pardini, J M Beyers, R Loeber*
- 909** Record linkage of domestic assault victims between an emergency department and the police  
*A Boyle, J Kirkbride, P Jones*
- Letter**
- 911** Excess in cardiovascular events on Mondays: could atherosclerotic plaques be more vulnerable after the weekend because of alcohol related cytokine dysregulation?  
*V Čulić*
- Book reviews**
- 911** Dicing with death. Chance, risk and health  
*R X de Menezes*
- 911** A short introduction to epidemiology, 2nd edn  
*M Parascandola*
- 912 Hygieia**