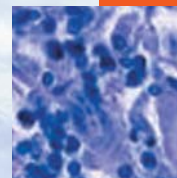


- In this issue**
 725 Without it, we are condemned to repeating ourselves
A Hernandez-Aguado, J R Ashton
- Speaker's corner**
 726 What's in a name?
D A Lawlor
- The JECH gallery**
 727 Celebrating New York's public health pioneers
J R Ashton
 733 Sweet smell of success
D F Salerno
 778 Children, housing, and health: from Glasgow slums to displaced persons
C A O'Donnell, G C M Watt, J E Zabaneh
- Aphorism of the month**
 765 "You have to remember that they are coming here to get away from us." (Lowell Levin)
J R Ashton
- Editorials**
 728 The importance of the past in public health
V Berridge, M Gorsky
 729 Intervening in communities: challenges for public health
H Roberts
 731 Sixth version of the "Uniform Requirements for Manuscripts Submitted to Biomedical Journals": lots of ethics, some new recommendations for manuscript preparation
A M García
- Continuing professional education**
 734 Streets of Paris, sunflower seeds, and Nobel prizes. Reflections on the quantitative paradigm of public health
J P Mackenbach
 738 Five American authors on wealth, poverty, and inequality
I Kawachi, P Howden Chapman
 743 Saramago's *All the Names* and the epidemiological dream
N Almeida-Filho
 747 History of addictions
V Berridge, S Mars
- Evidence based public health policy and practice**
 751 The importance of the past in public health
G Scally, J Womack
 756 Mercury contamination in reproductive age women in a Caribbean island: Vieques
C Ortiz-Roque, Y López-Rivera
 758 Capture-recapture estimates of problem drug use and the use of simulation based confidence intervals in a stratified analysis
I Gemmell, T Millar, G Hay
 766 Injecting drug use in Brighton, Liverpool, and London: best estimates of prevalence and coverage of public health indicators
M Hickman, V Higgins, V Hope, M Bellis, K Tilling, A Walker, J Henry



Contents continued on inside back cover

journal of
Epidemiology
& Community Health

Vol 58 No 9

Contents continued from outside back cover

Research reports

- 772** Neighbourhoods and self rated health: a comparison of public sector employees in London and Helsinki
M Stafford, P Martikainen, E Lahelma, M Marmot
- 779** Social position and minor psychiatric morbidity over time in the British Household Panel Survey 1991–1998
R D Wiggins, P Schofield, A Sacker, J Head, M Bartley

Theory and methods

- 788** Methods for exploring implementation variation and local context within a cluster randomised community intervention trial
P Hawe, A Shiell, T Riley, L Gold
- 794** Applying systematic review methods to studies of people's views: an example from public health research
A Harden, J Garcia, S Oliver, R Rees, J Shepherd, G Brunton, A Oakley

Letters

- 801** Rethinking the terms non-communicable disease and chronic disease
N Unwin, J Epping Jordan, R Bonita, M Ackland, B C K Choi, P Puska
- 801** Epidemiology of SARS: the missing pathogen?
R A Frizzell
- 802** Is the inverse care law no longer operating?
J Adams, M White
- 802** Do socioeconomic conditions reflect a high exposure to air pollution or more sensitive health conditions?
L Filleul, I Harrabi, A Braga, M C H Martins, L A A Pereira, M A Martins
- 803** Siblings and adult mortality and stroke risk
P H Jongbloet

Book review

- 803** Global public goods for health; health economic public perspectives
I Kaul

- 804** **Hygieia**