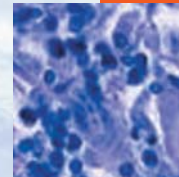


- In this issue**
- 533 Practising public health beyond medicine
C Alvarez-Dardet, J R Ashton
- Speaker's corner**
- 534 Persistent toxic substances: exposed individuals and exposed populations
M Porta
- The JECH gallery**
- 535 Margaret M Seminario—Labour Leader in the 20th century
D F Salerno, I L Feitshans
- 573 Andrea Kidd Taylor—Ensuring safety for labour
I L Feitshans, D F Salerno
- Aphorism of the month**
- 545 Epidemiology and a sense of place
J R Ashton
- Editorial**
- 536 Unreported cases of domestic violence against women: towards an epidemiology of social silence, tolerance, and inhibition
E Gracia
- Continuing professional education**
- 538 A glossary for evidence based public health
L Rychetnik, P Hawe, E Waters, A Barratt, M Frommer
- Evidence based public health policy and practice**
- 546 Enhancing the evidence base for health impact assessment
J Mindell, A Boaz, M Joffe, S Curtis, M Birley
- 552 Civil law problems and morbidity
P Pleasence, N J Balmer, A Buck, A O'Grady, H Genn
- 558 Screening for depleted uranium in the United Kingdom armed forces: who wants it and why?
N Greenberg, A C Iversen, C Unwin, L Hull, S Wessely
- 562 Traffic ticket fixing and driving behaviours in a large French working population
E Lagarde, M Chiron, S Lafont
- 569 Trends in the uptake and delivery of smoking cessation services to smokers in Great Britain
J Britton, S Lewis
- Research reports**
- 571 Fetal growth predicts stress susceptibility independent of parental education in 161 991 adolescent Swedish male conscripts
P M Nilsson, J-Å Nilsson, P-O Östergren, F Rasmussen
- 574 Ethnicity, acculturation, and self reported health. A population based study among immigrants from Poland, Turkey, and Iran in Sweden
E Wiking, S-E Johansson, J Sundquist
- 583 Increasing ethnic differences in mortality in Estonia after the collapse of the Soviet Union
M Leinsalu, D Vägerö, A E Kunst
- 590 Exploring the relation between class, gender, and self rated general health using the new socioeconomic classification. A study using data from the 2001 census
F Drever, T Doran, M Whitehead
- 597 Relative impact of childhood and adulthood socioeconomic conditions on cause specific mortality in men
Ø Næss, B Claussen, G Davey Smith



Contents continued on inside back cover

journal of
Epidemiology
& Community Health

Vol 58 No 7

Contents continued from outside back cover

- 599** Cumulative deprivation and cause specific mortality. A census based study of life course influences over three decades
Ø Næss, B Claussen, D S Thelle, G Davey Smith
- 604** Impact of smoking on the social gradient in health expectancy in Denmark
H Brønnum-Hansen, K Juel
- Theory and methods**
- 611** Improving estimation of the variance of expectation of life for small populations
P B S Silcocks
- 613** Measuring environmental factors can enhance the search for disease causing genes?
T Dwyer, A-L Ponsonby, J Stankovich, L Blizzard, S Easteal
- 616** Do we need an age specific measure of consensual poverty for older adults? Evidence from the poverty and social exclusion survey
L K Smith, R M Hancock
- 618** Self report in clinical and epidemiological studies with non-English speakers: the challenge of language and culture
S M Hunt, R Bhopal
- 623** An alternative approach to quantifying and addressing inequity in healthcare provision: access to surgery for lung cancer in the east of England
J Battersby, J Flowers, I Harvey
- Letters**
- 626** Erroneous, blurred, and mistaken—comments on the care need index
B Burström, O Lundberg, K Sundquist, M Malmström, S-E Johansson, J Sundquist
- Book reviews**
- 627** An introduction to quality assurance in health care
J Øvreteit
- 627** Distributing health care. Economic and ethical issues
C Protiere
- 627** Social reinsurance. A new approach to sustainable community health financing
G A Picone
- 628** **Hygieia**