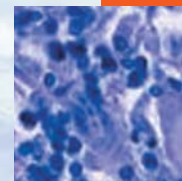


- In this issue**
 965 The journal of the increasingly relevant
C Álvarez-Dardet, J R Ashton
- Poem**
 996 Lead free
L Tafari
- Speaker's corner**
 1010 Health proverbs
B C K Choi, A W P Pak, J C L Choi, E C L Choi
- The JECH gallery**
 1018 Inequality in a Guarani graveyard
J Verdú, M T Ruiz
 1027 Schools in socially contrasting neighbourhoods
A Ellaway, S Macintyre
- Aphorism of the month**
 1035 If you always do what you always did, you always get
 what you always got
J R Ashton
- Editorials**
 966 A tentative step towards healthy public policy
M Joffe, J Mindell
 968 Assessing psychosocial/quality of life outcomes in screening:
 how do we do it better?
K J McCaffery, A L Barratt
- Continuing professional education**
 971 A glossary of terms for navigating the field of social network analysis
P Hawe, C Webster, A Shiell
- Evidence based public health policy and practice**
 976 Relation between increased numbers of safe playing areas and
 decreased vehicle related child mortality rates in Japan from
 1970 to 1985: a trend analysis
S Nakahara, Y Nakamura, M Ichikawa, S Wakai
 982 Post-disaster health effects: strategies for investigation and data
 collection. Experiences from the Enschede firework disaster
J Roorda, W A H J van Stiphout, R R R Huijsman-Rubingh
 988 SARS related preventive and risk behaviours practised by
 Hong Kong-mainland China cross border travellers during
 the outbreak of the SARS epidemic in Hong Kong
J T F Lau, X Yang, H Y Tsui, E Pang
 997 The Gatehouse Project: can a multilevel school intervention affect
 emotional wellbeing and health risk behaviours?
L Bond, G Patton, S Glover, J B Carlin, H Butler, L Thomas, G Bowes
 1004 Cost effectiveness of a community based exercise programme in
 over 65 year olds: cluster randomised trial
J F Munro, J P Nicholl, J E Brazier, R Davey, T Cochrane
- Research reports**
 1011 Increase of regional total cancer incidence in north Sweden due to
 the Chernobyl accident?
M Tondel, P Hjalmarsson, L Hardell, G Carlsson, O Axelsson
 1017 Fear of racism and health
S Karlsen, J Y Nazroo



Contents continued on inside back cover

journal of
Epidemiology
& **Community Health**

Vol 58 No 12

Contents continued from outside back cover

- 1019** Is the effect of work stress on cardiovascular mortality confounded by socioeconomic factors in the Valmet study?
E J Brunner, M Kivimäki, J Siegrist, T Theorell, R Luukkonen, H Riihimäki, J Vahtera, J Kirjonen, P Leino-Arjas
- 1021** Possible association between heavy computer users and glaucomatous visual field abnormalities: a cross sectional study in Japanese workers
M Tatemichi, T Nakano, K Tanaka, T Hayashi, T Nawa, T Miyamoto, H Hiro, M Sugita
- 1028** Life course measures of socioeconomic position and self reported health at age 50: prospective cohort study
J Adams, M White, M S Pearce, L Parker
- 1030** Confounding by socioeconomic position remains after adjusting for neighbourhood deprivation: an example using smoking and mortality
T Blakely, D Hunt, A Woodward
- 1032** Multiple sclerosis after infectious mononucleosis: record linkage study
M J Goldacre, C J Wotton, V Seagroatt, D Yeates
- 1036** Prevalence of comorbid psychiatric illness and substance misuse in primary care in England and Wales
M Frisher, J Collins, D Millson, I Crome, P Croft
- 1042** Poorer self assessed health in a prospective study of men with screen detected abdominal aortic aneurysm: a predictor or a consequence of screening outcome?
T M Marteau, L G Kim, J Upton, S G Thompson, A P Scott
- 1047** Lipid lowering drugs prescription and the risk of peripheral neuropathy: an exploratory case-control study using automated databases
G Corrao, A Zambon, L Bertù, E Botteri, O Leoni, P Contiero
- 1052** Are there socioeconomic gradients in the quality of data held by UK cancer registries?
J Adams, M White, D Forman
- Letters**
- 1054** Relation of rainfall pattern and epidemic leptospirosis in the Indian state of Kerala
M J Pappachan, M Sheela, K P Aravindan
- 1054** QALYs (QY)—not years—should be the unit of measurement of QALYs, DALYs, life expectancy, and life
I D K Dimoliatis
- Book reviews**
- 1055** Archie Cochrane: Back to the front
J Latour-Pérez
- 1055** Global AIDS: myths and facts
R O Valdiserri
- 1055** Epidemiologic methods. Studying the occurrence of illness
J de Irala
- 1055** **Correction**
- 1056** **Hygieia**