

**In this issue**

805 Time for poetry  
*C Alvarez-Dardet, J R Ashton*

**Speaker's corner**

809 Modulated release of health risk information to the general public with the use of mnemonics  
*B C K Choi*

**The JECH gallery**

809 Analysis of sea sickness data  
*M P Freeman, D A Bartie*

816 A supportive environment for regular physical activity  
*D A Lawlor*

825 Laboratory in a rural hospital. Guinea Bissau (Africa) 2000  
*D Gil*

**Poem**

810 Ozone friendly poem  
*L Tafari*

**Aphorism of the month**

830 "Your freedom ends where my nose begins." (USA, Anon)  
*J R Ashton*

**Editorials**

806 Transitions and paradigms  
*L Duhl*

807 Avian influenza: a human pandemic threat?  
*G Rezza*

**Evidence based public health policy and practice**

811 Evidence for public health policy on inequalities:  
1: The reality according to policymakers  
*M Petticrew, M Whitehead, S J Macintyre, H Graham, M Egan*

817 Evidence for public health policy on inequalities:  
2: Assembling the evidence jigsaw  
*M Whitehead, M Petticrew, H Graham, S J Macintyre, C Bamba, M Egan*

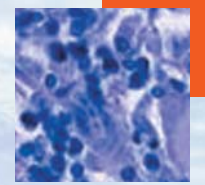
822 To control and beyond: moving towards eliminating the global tuberculosis threat  
*T F Brewer, S J Heymann*

826 Malaria, from natural to supernatural: a qualitative study of mothers' reactions to fever (Dianga, Gabon)  
*H Pilkington, J Mayombo, N Aubouy, P Deloron*

831 Apehis: public health impact of PM<sub>10</sub> in 19 European cities  
*S Medina, A Plasencia, F Ballester, H G Mücke, J Schwartz, on behalf of the Apehis group*

837 Evaluation of the health effects of a neighbourhood traffic calming scheme  
*D S Morrison, H Thomson, M Petticrew*

841 Safer storage of firearms at home and risk of suicide: a study of protective factors in a nationally representative sample  
*E D Shenassa, M L Rogers, K L Spalding, M B Roberts*



Contents continued on inside back cover

journal of  
**Epidemiology**  
**& Community Health**

Vol 58 No 10

Contents continued from outside back cover

- 849** Post-intervention effect of a computer tailored smoking cessation programme  
*J-F Etter, T V Perneger*
- 852** Infections, medication use, and the prevalence of symptoms of asthma, rhinitis, and eczema in childhood  
*C Cohet, S Cheng, C MacDonald, M Baker, S Foliaki, N Huntington, J Douwes, N Pearce*
- Continuing professional education**
- 858** Measures of health inequalities: part I  
*E Regidor*
- Research reports**
- 862** Socioeconomic inequalities in mobility decline in chronic disease groups (asthma/COPD, heart disease, diabetes mellitus, low back pain): only a minor role for disease severity and comorbidity  
*A Koster, H Bosma, G I J M Kempen, F J van Lenthe, J Th M van Eijk, J P Mackenbach*
- 870** Psychosocial factors and work related sickness absence among permanent and non-permanent employees  
*D Gimeno, F G Benavides, B C Amick III, J Benach, J Miguel Martínez*
- 877** Development of the chronic fatigue syndrome in severely fatigued employees: predictors of outcome in the Maastricht cohort study  
*M J H Huibers, I J Kant, J A Knottnerus, G Bleijenberg, G M H Swaen, S V Kasl*
- Letter**
- 883** Fibrinogen, social position, and "Mendelian randomisation"  
*P Jousilahti, V Salomaa*
- Book review**
- 883** The politics of the healthy life: an international perspective  
*J Powles*
- 884** **Hygieia**