

BRITISH JOURNAL OF SOCIAL MEDICINE

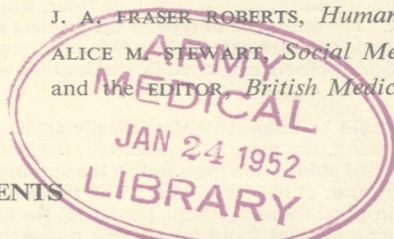
EDITORS

F. A. E. CREW, LANCELOT HOGBEN, and THOMAS McKEOWN

WITH THE ASSISTANCE OF

W. MELVILLE ARNOTT, *Internal Medicine*
DUGALD BAIRD, *Obstetrics and Gynaecology*
C. FRASER BROCKINGTON, *Public Health*
G. P. CROWDEN, *Applied Physiology*
GUNNAR DAHLBERG, *Medical Statistics*

R. W. B. ELLIS, *Paediatrics and Child Health*
J. R. MARRACK, *Nutrition*
J. A. FRASER ROBERTS, *Human Genetics*
ALICE M. STEWART, *Social Medicine*
and the EDITOR, *British Medical Journal*



CONTENTS

	PAGE
Measuring the Risk of Infection at Work. DAVID HEWITT and ALICE STEWART	209
ABO Groups of Infants and Children dying in the West of Scotland (1949-1951). DAVID STRUTHERS	223
Sex Ratio of Stillbirths related to Birth Weight. THOMAS McKEOWN and C. R. LOWE	229
Poliomyelitis in England and Wales, 1947-1950. W. J. MARTIN	236
Birth Weights of South African Babies.—II. Effect of Birth Rank on Birth Weight. EVA J. SALBER and EVELYN S. BRADSHAW	247
Secular Changes in the Incidence of Malformations of the Central Nervous System. BRIAN MACMAHON, R. G. RECORD, and THOMAS McKEOWN	254
Observations on all Births (23,970) in Birmingham, 1947. V. Birth Weight related to Economic Circumstances of Parents. J. R. GIBSON and THOMAS McKEOWN	259
Book Reviews	265
Abstracts	267
Index for 1951	281
Title page and Contents for 1951	

LONDON
BRITISH MEDICAL ASSOCIATION
TAVISTOCK SQUARE, W.C.1