

In this issue

- 561 *C Alvarez-Dardet, J R Ashton*

Editorials

- 562 Public health in India and the developing world: beyond medicine and primary healthcare

K S Jacob

- 564 Invited commentary: persistent organic pollutants and childhood learning and behavioural disorders

S A Korrick, D C Bellinger

Aphorism of the month

- 584 *L Levin and JRA*

The JECH gallery

- 604 Changing public spaces for getting physical activity

J Green

Speaker's corner

- 612 Cut to the chase: quickly achieving high coverage male circumcision

D Griffith, B Bellows, M Potts

Public health past and present

- 566 Food panics in history: corned beef, typhoid and "risk society"

D F Smith

Continuing professional education

- 571 A politics of health glossary

C Bamba, D Fox, A Scott-Samuel

Evidence based public health policy and practice

- 575 Portrayal of health-related behaviours in popular UK television soap operas

T Verma, J Adams, M White

- 578 Administration of hepatitis B vaccine in winter as a significant predictor of the poor effectiveness of vaccination in rural Mongolia: evidence from a nationwide survey

D Davaalkham, T Ojima, S Wiersma, T Lkhagvasuren, P Nymadawa, R Uehara, M Watanabe, I Oki, Y Nakamura

- 585 What determines public support of obesity prevention?

A Hilbert, W Rief, E Braehler

Research reports

- 591 Association of serum concentrations of persistent organic pollutants with the prevalence of learning disability and attention deficit disorder

D-H Lee, D R Jacobs, M Porta

- 597 The effects of ill health on entering and maintaining paid employment: evidence in European countries

M Schuring, L Burdorf, A Kunst, J Mackenbach

- 605 Socioeconomic status, status inconsistency and risk of ischaemic heart disease: a prospective study among members of a statutory health insurance company

R Peter, H Gessler, S Geyer

- 613 Effects of community-care networks on psychiatric emergency contacts, hospitalization and involuntary admission

A I Wierdsma, H D Poodt, C L Mulder

- 619 Suicide among male veterans: a prospective population-based study

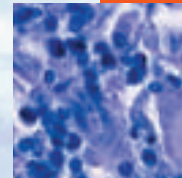
M S Kaplan, N Huguet, B H McFarland, J T Newsom

- 625 Prevalence and concordance of interpersonal violence reports from intimate partners: findings from the Pacific Islands Families Study

P J Schluter, J Paterson, M Feehan

- 631 Is low folate a risk factor for depression? A meta-analysis and exploration of heterogeneity

S Gilbody, T Lightfoot, T Sheldon




Contents continued on inside back cover

journal of
**Epidemiology
& Community Health**

Vol 61 No 7

Contents continued from outside back cover

- 638** *Helicobacter pylori* colonisation and eczema
O Herbarth, M Bauer, G J Fritz, P Herbarth, U Rolle-Kampczyk, P Krumbiegel, M Richter, T Richter
- 641**  Food and nutrient intakes and K-ras mutations in exocrine pancreatic cancer
E Morales, M Porta, J Vioque, T López, M A Mendez, J Pumarega, N Malats, M Crous-Bou, J Ngo, J Rifà, A Carrato, L Guarner, J M Corominas, F X Real, for the PANKRAS II Study Group
- Theory and methods**
- 650** Uncertainty analysis: an example of its application for estimating a survey proportion
A M Jurek, G Maldonado, S Greenland, T R Church
- PostScript**
- 655** Letter
- 655** Correction
- 656** **Hygieia**



This paper is freely available online
under the BMJ Journals unlocked
scheme, see [http://jech.com/info/
unlocked.dtl](http://jech.com/info/unlocked.dtl)

www.jech.com