

**In this issue**

- 465 *C Alvarez-Dardet, J R Ashton*

**Editorial**

- 466 Social inequalities in health among the elderly: a challenge for public health research  
*L Artazcoz, S Rueda*

**Speaker's corner**

- 467 The predictability of research in chronic illness  
*P Davies*

**The JECH gallery**

- 490 Children's exposure to tobacco  
*M Velasco-Garrido*

**Aphorism of the month**

- 498 A fish is the last one to see the water  
*L Levin and JRA*

**Public health past and present**

- 468 Local leadership in public health: the role of the medical officer of health in Britain, 1872–1974  
*M Gorsky*

**Continuing professional education**

- 473 A typology of actions to tackle social inequalities in health  
*M Whitehead*

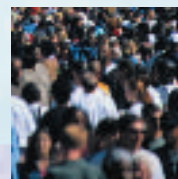
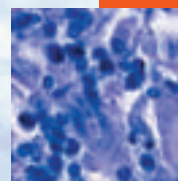
**Evidence based public health policy and practice**

- 479 Childhood adversities as a predictor of disability retirement  
*K Harkonmäki, K Korkeila, J Vahtera, M Kivimäki, S Suominen, L Sillanmäki, M Koskenvuo*
- 485 School culture as an influencing factor on youth substance use  
*S Bisset, W A Markham, P Aveyard*
- 491 Socioeconomic and food-related physical characteristics of the neighbourhood environment are associated with body mass index  
*M C Wang, S Kim, A A Gonzalez, K E MacLeod, M A Winkleby*
- 499 Change in the total and independent effects of education and occupational social class on mortality: analyses of all Finnish men and women in the period 1971–2000  
*P Martikainen, J Blomgren, T Valkonen*
- 506 Symptomatology attributable to psychological exposure to a chemical incident: a natural experiment  
*J Gallacher, K Bronstera, S Palmer, D Fone, R Lyons*
- 513 Unfairness and health: evidence from the Whitehall II Study  
*R De Vogli, J E Ferrie, T Chandola, M Kivimäki, M G Marmot*
- 519 Evaluation of the quality of cause of death statistics in rural China using verbal autopsies  
*L Wang, G Yang, J Ma, C Rao, X Wan, G Dubrovsky, A D Lopez*

**Research reports**

- 527 Neighbourhood environment and the incidence of depressive symptoms among middle-aged African Americans  
*M Schootman, E M Andresen, F D Wolinsky, T K Malmstrom, J P Miller, D K Miller*
- 533 The long shadow of work—does time since labour market exit affect the association between socioeconomic position and health in a post-working population  
*M Hyde, Ian R Jones*
- 540 Long-term impact of celebrity suicide on suicidal ideation: results from a population-based study  
*K-w Fu, P S F Yip*
- 547 Dying of cancer in Italy: impact on family and caregiver. The Italian Survey of Dying of Cancer  
*P G Rossi, M Beccaro, G Miccinesi, P Borgia, M Costantini, F Chini, D Baiocchi, G De Giacomi, M Grimaldi, M Montella, the ISDOC Working Group*

Contents continued on inside back cover



*journal of* **Epidemiology  
& Community Health**

Vol 61 No 6

Contents continued from outside back cover

- 555**      **Theory and methods**  
A framework for the delivery of public health: an ecological approach  
*J Nurse, P Edmondson-Jones*
- 559**      **PostScript**  
Book reviews
- 559**      Corrections
- 560**      **Hygieia**



This paper is freely available online  
under the BMJ Journals unlocked  
scheme, see [http://jech.com/info/  
unlocked.dtl](http://jech.com/info/unlocked.dtl)

[www.jech.com](http://www.jech.com)