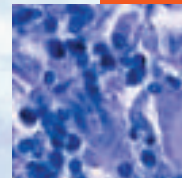


- In this issue**
 89 Making public health history useable
C Alvarez-Dardet, J R Ashton
- Editorial**
 90 Making public health history usable: the launch of a new series in *JECH*
V Berridge
- Speaker's corner**
 91 Is it time to abandon colour categories for ethnic groups?
P J Aspinall
- The *JECH* gallery**
 94 Money orders and alcohol yes; fruits, vegetables and skimmed milk no
M Franco, F Brancati, A Diez-Roux
- Aphorism of the month**
 134 The lessons from BSE
J R Ashton
- Research agenda**
 92 Global environmental change and human health: a public health research agenda
J P Mackenbach
- Public health past and present**
 95 Knights, knaves, pawns and queens: attitudes to behaviour in postwar Britain
J Welshman
- Continuing professional education**
 98 Geographical epidemiology, spatial analysis and geographical information systems:
 a multidisciplinary glossary
M Rezaeian, G Dunn, S St Leger, L Appleby
- Evidence based public health policy and practice**
 103 Assessing post-disaster consequences for health at the population level: experience from
 the AZF factory explosion in Toulouse
*T Lang, V Schwoebel, E Diène, E Bauvin, E Garrigue, K Lapierre-Duval, A Guinard,
 S Cassadou, for the Scientific and Operational Committees*
- 108 Personal, social and environmental determinants of educational inequalities in walking:
 a multilevel study
K Ball, A Timperio, J Salmon, B Giles-Corti, R Roberts, D Crawford
- 115 Cardiovascular risk prediction tools for populations in Asia
Asia Pacific Cohort Studies Collaboration
- 122 Participative risk communication in an industrial village in Sardinia
A Mereu, C Sardu, L Minerba, A Sotgiu, P Contu
- 128 Effectiveness of a physician-oriented feedback intervention on inappropriate hospital stays
P Antón, S Peiró, J M Aranaz, R Calpena, A Compañ, E Leutscher, V Ruiz
- Research reports**
 135 Association between childhood fatal injuries and socioeconomic position at individual and
 area levels: a multilevel study
M-H Kim, S V Subramanian, I Kawachi, C-Y Kim
- 141 The relation between family socioeconomic trajectories from childhood to adolescence
 and dental caries and associated oral behaviours
M A Peres, K G Peres, A J D de Barros, C G Victora
- 146 Stronger associations between daily mortality and fine particulate air pollution in
 summer than in winter: evidence from a heavily polluted region in western Europe
*T S Nawrot, R Torfs, F Fierens, S De Henauw, P H Hoet, G Van Kersschaever,
 G De Backer, B Nemery*



Contents continued on inside back cover

journal of
Epidemiology
& Community Health

Vol 61 No 2

Contents continued from outside back cover

- 150** Social gradients in binge drinking and abstaining: trends in a cohort of British adults
B J M H Jefferis, O Manor, C Power
- 154** Organisational downsizing and increased use of psychotropic drugs among employees who remain in employment
M Kivimäki, T Honkonen, K Wahlbeck, M Elovainio, J Pentti, T Klaukka, M Virtanen, J Vahtera
- 159** Mortality in relation to sex in the affluent world
J E Rigby, D Dorling
- 165** Modelling of municipal mortality due to haematological neoplasias in Spain
R Ramis-Prieto, J García-Pérez, M Pollán, N Aragonés, B Pérez-Gómez, G López-Abente
- PostScript**
- 172** Letter
- 172** Book reviews
- 175** Corrections
- 176** Hygieia

www.jech.com