

**In this issue**

- 1 *C Alvarez-Dardet, J R Ashton*

**Editorials**

- 2 Sharing hypotheses and ideas in public health research: contributing to the research agenda  
*B Lumberras, I Hernández-Aguado*
- 3 Neighbourhood influences on health  
*I Kawachi, S V Subramanian*

**The JECH gallery**

- 5 D for division or dream?  
*J C Coulson, T Trayers*

**Aphorism of the month**

- 27 "Starting where they are is the key to providing for underserved groups"  
*L Levin and JRA*

**Speaker's corner**

- 39 Patient centredness  
*P G Davies*

**Continuing professional education**

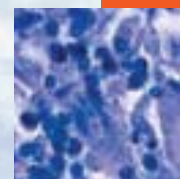
- 6 A glossary for the social epidemiology of work organisation: Part 3, Terms from the sociology of labour markets  
*W C Hadden, C Muntaner, J Benach, D Gimeno, F G Benavides*
- 9 Why do peer reviewers decline to review? A survey  
*L Tite, S Schroter*

**Evidence based public health policy and practice**

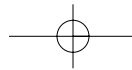
- 13 Do places affect the probability of death in Australia? A multilevel study of area-level disadvantage, individual-level socioeconomic position and all-cause mortality, 1998–2000  
*G Turrell, A Kavanagh, G Draper, S V Subramanian*
- 20 Does the UK government's teenage pregnancy strategy deal with the correct risk factors? Findings from a secondary analysis of data from a randomised trial of sex education and their implications for policy  
*E Allen, C Bonell, V Strange, A Copas, J Stephenson, A M Johnson, A Oakley*
- 28 Thailand—lighting up a dark market: British American tobacco, sports sponsorship and the circumvention of legislation  
*R MacKenzie, J Collin, K Sriwongcharoen*
- 34 The population effect of crime and neighbourhood on physical activity: an analysis of 15 461 adults  
*R A Harrison, I Gemmell, R F Heller*
- 40 Validity of an adaptation of the Framingham cardiovascular risk function: the VERIFICA study  
*J Marrugat, I Subirana, E Comín, C Cabezas, J Vila, R Elosua, B-H Nam, R Ramos, J Sala, P Solanas, F Cerdón, J Gené-Badia, R B D'Agostino, for the VERIFICA (Validación de la Ecuación de Riesgo Individual de Framingham de Incidentes Coronarios Adaptada) Investigators*

**Research reports**

- 48 Psychological distress after employment transitions: the role of subjective financial position as a mediator  
*C Thomas, M Benzeval, S Stansfeld*
- 53 Association of low blood pressure with anxiety and depression: the Nord-Trøndelag Health Study  
*B Hildrum, A Mykletun, E Stordal, I Bjelland, A A Dahl, J Holmen*
- 59 Cancer is overtaking cardiovascular disease as the main driver of socioeconomic inequalities in mortality: New Zealand (1981–99)  
*J Fawcett, T Blakely*



Contents continued on inside back cover



# *journal of* **Epidemiology & Community Health**

**Vol 61 No 1**

Contents continued from outside back cover

- 67** Association of metabolic syndrome and insulin resistance with congestive heart failure: findings from the Third National Health and Nutrition Examination Survey  
*C Li, E S Ford, L C McGuire, A H Mokdad*
- 74** Eye discomfort, headache and back pain among Mayan Guatemalan women taking part in a randomised stove intervention trial  
*E Diaz, T Smith-Sivertsen, D Pope, R T Lie, A Diaz, J McCracken, B Arana, K R Smith, N Bruce*
- 80** Familial risks for nerve, nerve root and plexus disorders in siblings based on hospitalisations in Sweden  
*K Hemminki, X Li, K Sundquist*
- 85** The association of the paraoxonase (*PON1*) Q192R polymorphism with depression in older women: findings from the British Women's Heart and Health Study  
*D A Lawlor, I N M Day, T R Gaunt, L J Hinks, N Timpson, S Ebrahim, G D Smith*
- 88** **Hygieia**