

**In this issue**

- 185 A varied offering and an environmental flavour  
*C Alvarez-Dardet, J R Ashton*

**Editorial**

- 186 Removing organs "just in case"—is prophylactic removal of the ovaries a good thing?  
*A Clarke, Y M Chang, K McPherson*

**The JECH gallery**

- 191 A sign of the times  
*J R Ashton*

**Aphorism of the month**

- 212 Public health is investment not cost  
*L Levin, J R Ashton*

**Continuing professional education**

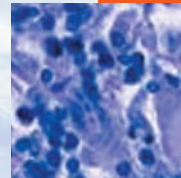
- 188 What same sex civil partnerships may mean for health  
*M King, A Bartlett*
- 192 Infectious diseases epidemiology  
*M L Barreto, M G Teixeira, E H Carmo*

**Evidence based public health policy and practice**

- 196 Use of health impact assessment in incorporating health considerations in decision making  
*C Davenport, J Mathers, J Parry*
- 202 Effect of area poverty rate on cancer screening across US communities  
*M Schootman, D B Jaffe, E A Baker, M S Walker*
- 208 Socioeconomic deprivation, travel distance, location of service, and uptake of breast cancer screening in North Derbyshire, UK  
*R Maheswaran, T Pearson, H Jordan, D Black*
- 213 The polypill: at what price would it become cost effective?  
*O H Franco, E W Steyerberg, C de Laet*

**Research reports**

- 218 Changes in socioeconomic inequalities in census measures of health in England and Wales, 1991–2001  
*J Adams, L Holland, M White*
- 221 Sociodemographic predictors of antenatal and postpartum depressive symptoms among women in a medical group practice  
*J W Rich-Edwards, K Kleinman, A Abrams, B L Harlow, T J McLaughlin, H Joffe, M W Gillman*
- 228 Socioeconomic lifecourse influences on women's smoking status in early adulthood  
*H Graham, B Francis, H M Inskip, J Harman, and SWS Study Team*
- 234 Children's exposure to nitrogen dioxide in Sweden: investigating environmental injustice in an egalitarian country  
*B Chaix, S Gustafsson, M Jerrett, H Kristersson, T Lithman, Å Boalt, J Merlo*
- 242 Prevalence of arsenic exposure and skin lesions. A population based survey in Matlab, Bangladesh  
*M Rahman, M Vahter, M A Wahed, N Sohel, M Yunus, P K Streatfield, S E Arifeen, A Bhuiya, K Zaman, A M R Chowdhury, E-C Ekström, L Å Persson*
- 249 Injury mortality among ethnic minority groups in the Netherlands  
*I Stirbu, A E Kunst, V Bos, E F van Beeck*
- 256 Respiratory diseases and pesticide exposure: a case-control study in Lebanon  
*P Salameh, M Waked, I Baldi, P Brochard, B A Saleh*
- 262 Myocardial infarction deaths after high level exposure to particulate matter  
*Y Murakami, M Ono*
- 267 Socioeconomic position and sleep quantity in UK adults  
*J Adams*



Contents continued on inside back cover

*journal of* **Epidemiology**  
**& Community Health**

**Vol 60 No 3**

Contents continued from outside back cover

- 270** Leisure time exercise and personal circumstances in the working age population:  
longitudinal analysis of the British household panel survey  
*F Popham, R Mitchell*
- 275** Skinfold thickness, body mass index, and fatal coronary heart disease: 30 year follow up  
of the Northwick Park heart study  
*J Kim, T Meade, A Haines*
- 280** **Hygieia**