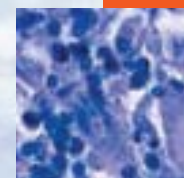


- 825 In this issue**
Faith, hope, and photography
C Alvarez-Dardet, J R Ashton
- 826 Editorial**
Hope, ethics, and public health
S S Coughlin
- 828 Speaker's corner**
Implications for health in a low carbon (Contract and Converge) world
R Stott
- 835 Aphorism of the month**
Not much is less healthy than a Healthy Hospital
L Levin, J R Ashton
- 886 The JECH gallery**
Visions and voices: HIV in the 21st century. Indigent persons living with HIV/AIDS in the southern USA use photovoice to communicate meaning
S D Rhodes
- 829 Evidence based public health policy and practice**
Waterborne diseases prevention: evaluation of inspection scoring system for water sites according to water microbiological tests during the Athens 2004 pre-Olympic and Olympic period
C Hadjichristodoulou, V Mouchtouri, A Voutsourelis, A Konstantinidis, P Petrikos, E Velonakis, P Boufa, J Kremastinou
- 836** Treatment and care of HIV positive asylum seekers
P A Cook, J Downing, P Rimmer, Q Syed, M A Bellis
- 839** Effectiveness calculation in economic analysis: the case of statins for cardiovascular disease prevention
O H Franco, E W Steyerberg, A Peeters, L Bonneux
- 846** Methodology for optimising location of new primary health care facilities in rural communities: a case study in KwaZulu-Natal, South Africa
F Tanser
- Continuing professional education**
- 851** Advanced paternal age: How old is too old?
I Bray, D Gunnell, G Davey Smith
- 854** Participatory action research
F Baum, C MacDougall, D Smith
- 858** Pragmatic randomised controlled trials in parenting research: the issue of intention to treat
K Whittaker, C Sutton, C Burton
- Research reports**
- 865** Maternal social capital and child health in Vietnam
T Harpham, M J De Silva, T Tuan
- 872** Childhood IQ and life course socioeconomic position in relation to alcohol induced hangovers in adulthood: the Aberdeen children of the 1950s study
G D Batty, I J Deary, S Macintyre
- 875** The changing relation between education and life expectancy in central and eastern Europe in the 1990s
V M Shkolnikov, E M Andreev, D Jasilionis, M Leinsalu, O I Antonova, M McKee
- 882** Comparison of the effects of low childhood socioeconomic position and low adulthood socioeconomic position on self rated health in four European studies
M Hyde, H Jakub, M Melchior, F Van Oort, S Weyers
- 887** Epidemiological disaster research: the necessity to include representative samples of the involved disaster workers. Experience from the epidemiological study air disaster Amsterdam-ESADA
A C Huizink, N Smidt, J W R Twisk, P Slottje, T Smid
- 890** Air pollution and emergency admissions in Boston, MA
A Zanobetti, J Schwartz



Contents continued on inside back cover

journal of **Epidemiology
& Community Health**

Vol 60 No 10

Contents continued from outside back cover

- 896** **Theory and methods**
Social determinants of health: a veil that hides socioeconomic position and its relation
with health
E Regidor
- 902** A model for collaborative evaluation of university-community partnerships
S Bowen, P J Martens
- 908** **Hygieia**

www.jech.com