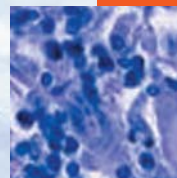


- In this issue**
- 913 Coherence, location, and public health  
*C Alvarez-Dardet, J R Ashton*
- Editorial**
- 914 "You decide doctor". What do patient preference arms in clinical trials really mean?  
*A Bowling, G Rowe*
- Speaker's corner**
- 915 A fascinating doctoral thesis  
*J P Mackenbach*
- The JECH gallery**
- 919 Cheers for health  
*C A U Gil*
- 966 Sir John Pringle's *Observations on the Diseases of the Army*—an early scientific account of epidemiology and the prevention of cross infection  
*I Milne*
- Aphorism of the month**
- 933  
*Lowell Levin*
- Continuing professional education**
- 916 Terms in reproductive and perinatal epidemiology: I. Reproductive terms  
*R H N Nguyen, A J Wilcox*
- Evidence based public health policy and practice**
- 920 General practitioners with a special interest in public health; at last a way to deliver public health in primary care  
*S Bradley, S D McKelvey*
- 924 Shrinking areas and mortality: an artefact of deprivation effects?  
*D J Exeter, Z Feng, R Flowerdew, P J Boyle*
- 927 Cost effectiveness of statins in coronary heart disease  
*O H Franco, A Peeters, C W N Looman, L Bonneux*
- Research reports**
- 934 Urban area disadvantage and physical activity: a multilevel study in Melbourne, Australia  
*A M Kavanagh, J L Goller, T King, D Jolley, D Crawford, G Turrell*
- 941 Variation of health status among people living on boats in Hue, Vietnam  
*N K L Quang, T Takano, K Nakamura, M Watanabe, T Inose, Y Fukuda, K Seino*
- 948 Environmental equity, air quality, socioeconomic status, and respiratory health: a linkage analysis of routine data from the Health Survey for England  
*B W Wheeler, Y Ben-Shlomo*
- 955 Does birth weight predict childhood diet in the Avon longitudinal study of parents and children?  
*W A Shultis, S D Leary, A R Ness, C J Bain, P M Emmett, and the ALSPAC Study Team*
- 961 Ethnic differences in cause specific mortality among hospitalised patients with diabetes: a linkage study in New Zealand  
*M Jeffreys, C Wright, A 't Manneje, K Huang, N Pearce*
- 967 Diversity and change in suicide seasonality over 125 years  
*V Ajdacic-Gross, M Bopp, R Sansossio, C Lauber, M Gostynski, D Eich, F Gutzwiller, W Rössler*
- 973 Local economy and sickness absence: prospective cohort study  
*M Virtanen, M Kivimäki, M Elovainio, P Virtanen, J Vahtera*
- 979 Sense of coherence as a moderator of the effects of stressful life events on health  
*C G Richardson, P A Ratner*
- Theory and methods**
- 985 A direct approach to control short term population dynamics in time series studies  
*S Z Sajani, F Scotto, P Lauriola*
- 987 Meta-analysis of randomised trials of monetary incentives and response to mailed questionnaires  
*P Edwards, R Cooper, I Roberts, C Frost*



Contents continued on inside back cover

*journal of* **Epidemiology**  
**& Community Health**

**Vol 59 No 11**

Contents continued from outside back cover

- 1000** A landmark for popperian epidemiology: refutation of the randomised Aldactone evaluation study  
*E Koch, A Otarola, A Kirschbaum*
- Book reviews**
- 1007** Statistical analysis of epidemiologic data, 3rd ed  
*M Delgado-Rodriguez*
- 1007** Building better health. A handbook of behavioural change  
*C Pritchard*
- 1007** **Correction**
- 1008** **Hygieia**



**59 (11)**

*J Epidemiol Community Health* 2005 59: 913-1008

---

Updated information and services can be found at:  
<http://jech.bmj.com/content/59/11.citation>

---

*These include:*

**Email alerting  
service**

Receive free email alerts when new articles cite this article. Sign up in the box at the top right corner of the online article.

---

**Notes**

---

To request permissions go to:  
<http://group.bmj.com/group/rights-licensing/permissions>

To order reprints go to:  
<http://journals.bmj.com/cgi/reprintform>

To subscribe to BMJ go to:  
<http://group.bmj.com/subscribe/>