

In this issue

1 Ecology, ecology, ecology
C Alvarez-Dardet, J R Ashton

The JECH gallery

4 Cholera and a tale of two cities
J R Ashton

30 Hygiene charter: laying down the spirit of the Healthy City
A Lee, K M Chan

Speakers' corner

5 No smoking allowed. Mandatory and other strategies for tobacco control
M Nebot

Aphorism of the month

14 Cost benefit analysis consists of weak definitions on both sides of the equation (Lowell Levin)
J R Ashton

Poem

48 Tai Chi
L Tafari

Editorials

2 Disentangling the effects of different components of socioeconomic status on health in early childhood
N J Spencer

3 What next for low dose aspirin?
G Morgan

Continuing professional education

6 Ecological perspectives in health research
L McLaren, P Hawe

Evidence based public health policy and practice

15 Environmental risks in the developing world: exposure indicators for evaluating interventions, programmes, and policies
M Ezzati, J Utzinger, S Cairncross, A J Cohen, B H Singer

Research reports

23 Work related stressful life events and the risk of myocardial infarction. Case-control and case-crossover analyses within the Stockholm heart epidemiology programme (SHEEP)
J Möller, T Theorell, U de Faire, A Ahlbom, J Hallqvist

31 Nonagenarians and centenarians in Switzerland, 1860–2001: a demographic analysis
J-M Robine, F Paccaud

38 Relation between early life socioeconomic position and all cause mortality in two generations. A longitudinal study of Danish men born in 1953 and their parents
M Osler, A-M N Andersen, G D Batty, B Holstein

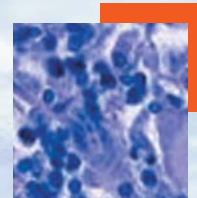
42 Understanding the dimensions of socioeconomic status that influence toddlers' health: unique impact of lack of money for basic needs in Quebec's birth cohort
L Séguin, Q Xu, L Gauvin, M-V Zunzunegui, L Potvin, K L Frohlich

49 Association between childhood and adulthood socioeconomic position and pregnancy induced hypertension: results from the Aberdeen children of the 1950s cohort study
D A Lawlor, S M B Morton, D Nitsch, D A Leon

56 Effects of marital transitions on changes in dietary and other health behaviours in US male health professionals
P M Eng, I Kawachi, G Fitzmaurice, E B Rimm

63 Work stress, smoking status, and smoking intensity: an observational study of 46 190 employees
A Kouvonen, M Kivimäki, M Virtanen, J Pentti, J Vahtera

70 Depression and early retirement: prospective population based study in middle aged men
M Karpansalo, J Kauhanen, T A Lakka, P Manninen, G A Kaplan, J T Salonen



Contents continued on inside back cover

journal of
Epidemiology
& **Community Health**

Vol 59 No 1

Contents continued from outside back cover

Theory and methods

- 75 Reliability and validity of the short form of the child health questionnaire for parents (CHQ-PF28) in large random school based and general population samples
H Raat, A M Botterweck, J M Landgraf, W C Hoogeveen, M-L Essink-Bot

Short report

- 83 Consistency in gene-Alzheimer's disease association studies
J Llorca, T Dierssen-Sotos, O Combarros, J Berciano

Letter

- 86 Multivariate regression analysis of associations between general practitioner prescribing rates for coronary heart disease drugs and healthcare needs indicators
P R Ward, P R Noyce, A S St Leger

Book reviews

- 86 Health
D Gil, C Vives-Cases
- 87 Global public goods for health; health economic public perspectives
J Kaul
- 87 Health inequalities: lifecourse approaches
K Beckett-Milburn
- 87 Violence against women: the health sector responds
A Paranjape
- 87 MONICA monograph and multimedia sourcebook
C A Birt

Correction

Hygieia