

**In this issue**

- 533 Practising public health beyond medicine  
*C Alvarez-Dardet, J R Ashton*

**Speaker's corner**

- 534 Persistent toxic substances: exposed individuals and exposed populations  
*M Porta*

**The JECH gallery**

- 535 Margaret M Seminario—Labour Leader in the 20th century  
*D F Salerno, I L Feitshans*
- 573 Andrea Kidd Taylor—Ensuring safety for labour  
*I L Feitshans, D F Salerno*

**Aphorism of the month**

- 545 Epidemiology and a sense of place  
*J R Ashton*

**Editorial**

- 536 Unreported cases of domestic violence against women: towards an epidemiology of social silence, tolerance, and inhibition  
*E Gracia*

**Continuing professional education**

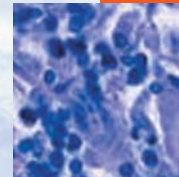
- 538 A glossary for evidence based public health  
*L Rychetnik, P Hawe, E Waters, A Barratt, M Frommer*

**Evidence based public health policy and practice**

- 546 Enhancing the evidence base for health impact assessment  
*J Mindell, A Boaz, M Joffe, S Curtis, M Birley*
- 552 Civil law problems and morbidity  
*P Pleasence, N J Balmer, A Buck, A O'Grady, H Genn*
- 558 Screening for depleted uranium in the United Kingdom armed forces: who wants it and why?  
*N Greenberg, A C Iversen, C Unwin, L Hull, S Wessely*
- 562 Traffic ticket fixing and driving behaviours in a large French working population  
*E Lagarde, M Chiron, S Lafont*
- 569 Trends in the uptake and delivery of smoking cessation services to smokers in Great Britain  
*J Britton, S Lewis*

**Research reports**

- 571 Fetal growth predicts stress susceptibility independent of parental education in 161 991 adolescent Swedish male conscripts  
*P M Nilsson, J-Å Nilsson, P-O Östergren, F Rasmussen*
- 574 Ethnicity, acculturation, and self reported health. A population based study among immigrants from Poland, Turkey, and Iran in Sweden  
*E Wiking, S-E Johansson, J Sundquist*
- 583 Increasing ethnic differences in mortality in Estonia after the collapse of the Soviet Union  
*M Leinsalu, D Vägerö, A E Kunst*
- 590 Exploring the relation between class, gender, and self rated general health using the new socioeconomic classification. A study using data from the 2001 census  
*F Drever, T Doran, M Whitehead*
- 597 Relative impact of childhood and adulthood socioeconomic conditions on cause specific mortality in men  
*Ø Næss, B Claussen, G Davey Smith*



Contents continued on inside back cover

journal of  
**Epidemiology**  
**& Community Health**

Vol 58 No 7

Contents continued from outside back cover

- 599** Cumulative deprivation and cause specific mortality. A census based study of life course influences over three decades  
*Ø Næss, B Claussen, D S Thelle, G Davey Smith*
- 604** Impact of smoking on the social gradient in health expectancy in Denmark  
*H Brønnum-Hansen, K Juel*
- Theory and methods**
- 611** Improving estimation of the variance of expectation of life for small populations  
*P B S Silcocks*
- 613** Measuring environmental factors can enhance the search for disease causing genes?  
*T Dwyer, A-L Ponsonby, J Stankovich, L Blizzard, S Easteal*
- 616** Do we need an age specific measure of consensual poverty for older adults? Evidence from the poverty and social exclusion survey  
*L K Smith, R M Hancock*
- 618** Self report in clinical and epidemiological studies with non-English speakers: the challenge of language and culture  
*S M Hunt, R Bhopal*
- 623** An alternative approach to quantifying and addressing inequity in healthcare provision: access to surgery for lung cancer in the east of England  
*J Battersby, J Flowers, I Harvey*
- Letters**
- 626** Erroneous, blurred, and mistaken—comments on the care need index  
*B Burström, O Lundberg, K Sundquist, M Malmström, S-E Johansson, J Sundquist*
- Book reviews**
- 627** An introduction to quality assurance in health care  
*J Øvreteit*
- 627** Distributing health care. Economic and ethical issues  
*C Protiere*
- 627** Social reinsurance. A new approach to sustainable community health financing  
*G A Picone*
- 628** **Hygieia**